



The 2015 participants of the Pacific Northwest Wheat Export and Wheat Quality Tour at the Wheat Marketing Center in Portland.

Export tour, quality workshop a success

In early December, a group of wheat growers and industry representatives took part in the Washington Grain Commission's exciting and informative Pacific Northwest Wheat Export and Wheat Quality Tour.

The group travelled to Portland for this three-day event where they toured Bonneville Dam, the Mondolez (Nabisco) Bakery, Columbia Export Terminal, the Federal Grain Inspection Service, the Wheat Marketing Center, Shaver Transportation Barge Facility and Full Sail Brewing Co. Transportation representatives also spoke to the group, including individuals from the Columbia River Pilots, Columbia Bar Pilots and Pacific Northwest Waterways Association.

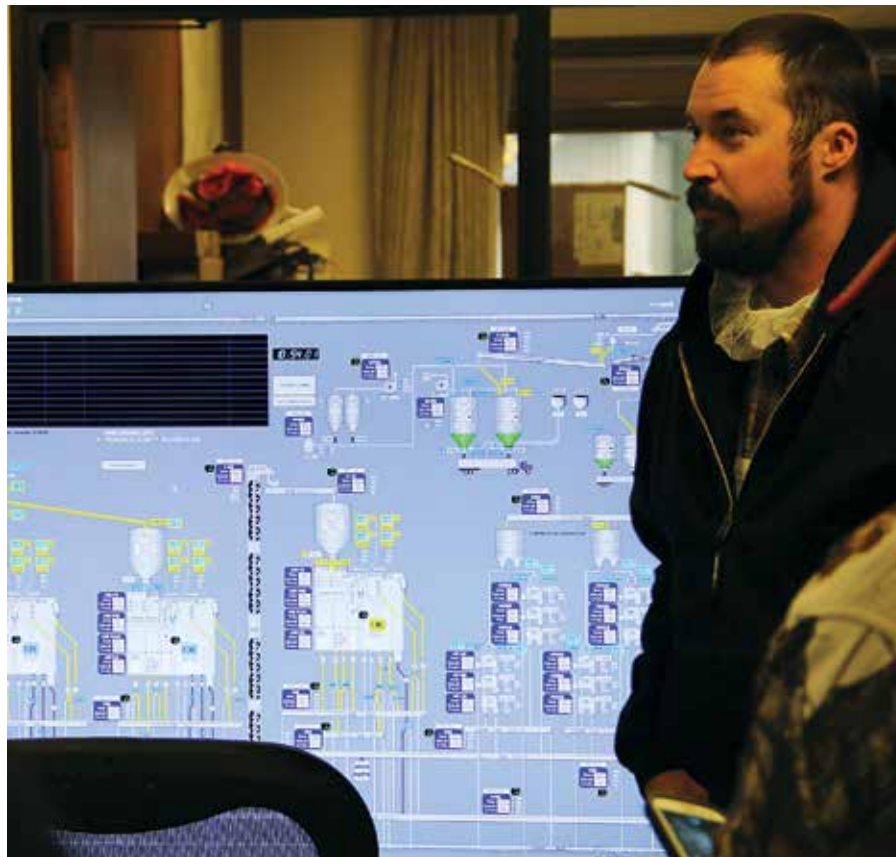
For more information or to sign up for the 2016 tour that will be held Nov. 29-Dec. 1, please contact Mary Palmer Sullivan at (509) 456-2481 or by email at mary@wagrains.org. ■



Nancy Ruark, a wheat grower from Pomeroy, Wash., shows her muscles while making tortillas at the Wheat Marketing Center in Portland.



(Above) One of Shaver Transportation tugboats docked at their headquarters in Portland. (Right) Philip Stahl, a grower from Ritzville, in the control room at Columbia Grain Terminal also in Portland.



WASHINGTON GRAIN COMMISSION



(Above) Barrett Bumpas, from the U.S. Department of Agriculture's Foreign Agricultural Service, helps Wheat Marketing Center employee Kathleen Gehring make pita bread. (Left) Tour participants had the chance to tour the Full Sail Brewing Company in Hood River, Ore.

WHEAT LIFE

The official publication of the Washington Association of Wheat Growers

MAY | 2016

CHANGING THE PESTICIDE CONVERSATION

Growers use technology, good stewardship to put safety first



Address Service Requested

Washington Association of Wheat Growers
109 East First Avenue, Ritzville, WA 99169

Ric Wesselman on his time
as Foundation president

The best kind of bubbles

2015 soft white winter wheat
variety testing results