



2020 PACIFIC NORTHWEST CROP QUALITY REPORT

WEEK 2: August 13, 2020

By the end of the second week reporting period for the 2020 Pacific Northwest wheat harvest, we received a total of 202 samples.

Of the 114 wheat samples we received in the second week, 85 were soft white (SWH), 21 were white club (WHCB), and 8 were hard red winter (HRW). One hundred and seven samples (94%) came from District 8 (East Central Washington) and 7 (6%) came from District 4 (North Central Oregon) and District 5 (Northeastern Oregon).

USDA Economic Statistics Districts (Table 1) showed the following: Test weights for SWH ranged from 61.9 to 63.0 lbs/bu (81.3 to 82.8 kg/hl). Dockage ranged from 0.3 to 0.5%. Wheat moisture content ranged from 9.0 to 9.7%. Average SWH wheat protein content (12% mb) came down to 9.9% from 10.3% last week. SWH falling number average value (14% mb) remained similar to last week at 324 seconds. Thousand kernel weight (14% mb) and kernel size indicated lighter and slightly smaller kernels, respectively when compared to last year's averages. WHCB averages had higher test weight, lower moisture content, slightly higher protein, similar falling number value, heavier thousand kernel weight, and larger kernel size when compared to last year's averages after the second week. For HRW samples, averages indicated slightly higher test weight, slightly lower kernel moisture, slightly higher protein content, similar falling number value, and similar kernel characteristics when compared to last year's averages. No new HRS samples were received.

We will continue to report the six PNW Production Zones (Table 2): Northwest (NW), Southwest (SW), North Central (NC), Central (C), Northeast (NE), and Southeast (SE). The Zones are based on country elevator locations and climatic conditions. This week samples came from Zones NC (94%) and C (6%).

Although the average SWH protein (12% mb) was 9.9% at the end of second week, it is still too early to determine this year's average protein, especially since we have not received samples from all areas of PNW.



BY USDA ECONOMIC STATISTICS DISTRICTS

Table 1

2020 CROP WEEK 2 August 13, 2020																				
		Grading Data									Quality Data									
Class	District	Number of Samples	Test Weight (lb/bu)	Test Weight (kg/hl)	Dockage (%)	Heat Damage (%)	Total Damage (%)	Foreign Material (%)	Shrunk & Broken (%)	Total Defects (%)	Moisture (%)	Protein (% 12% mb)			Falling Number (s. 14%mb)	Thousand Kernel Weight (g. 14% mb)	Kernel Hardness (-20 to 120)	Kernel Size (mm)	Ash (% 14% mb)	Wet Gluten (% 14% mb)
												Average	Low	High						
SWH	4	15	62.9	82.6	0.5	0.0	0.0	0.0	0.3	0.3	9.4	9.8	8.4	11.9	314	37.2	35.3	2.82	1.28	23.7
SWH	5	4	62.1	81.7	0.3	0.0	0.0	0.0	0.3	0.3	9.2	9.5	8.8	9.9	328	37.8	27.6	2.82	1.42	21.9
SWH	6/7	14	63.0	82.8	0.3	0.0	0.0	0.0	0.4	0.4	9.7	10.2	8.8	12.3	317	36.2	34.3	2.72	1.17	25.7
SWH	8	90	61.9	81.3	0.4	0.0	0.0	0.0	0.4	0.4	9.0	9.8	7.0	12.7	326	34.7	32.8	2.73	1.25	24.2
SWH	10	5	62.5	82.2	0.4	0.0	0.1	0.0	0.2	0.3	9.3	10.8	9.6	12.1	333	36.8	28.2	2.84	1.34	25.4
	Crop Year Average																			
SWH	2020	128	62.1	81.7	0.4	0.0	0.0	0.0	0.4	0.4	9.1	9.9			324	35.4	32.9	2.75	1.25	24.3
SWH	2019	438	61.6	81.0	0.5	0.0	0.0	0.0	0.5	0.5	9.9	10.0			307	36.4	23.4	2.77	1.35	23.9
WHCB	5	1	62.5	82.2	0.1	0.0	0.0	0.0	0.6	0.6	9.5	10.2	10.2	10.2	313	31.7	32.3	2.61	1.21	20.9
WHCB	6/7	4	61.6	81.0	0.4	0.0	0.0	0.0	0.8	0.8	8.7	11.0	9.9	12.0	290	33.5	33.6	2.62	1.28	15.1
WHCB	8	23	61.6	81.0	0.4	0.0	0.0	0.0	0.7	0.7	8.6	9.8	6.6	12.1	315	34.0	30.9	2.63	1.24	18.2
	Crop Year Average																			
WHCB	2020	28	61.6	81.1	0.3	0.0	0.0	0.0	0.7	0.8	8.7	10.0			311	33.9	31.3	2.63	1.24	17.8
WHCB	2019	113	60.6	79.7	0.8	0.0	0.0	0.1	1.2	1.2	9.3	9.8			314	31.0	21.2	2.54	1.29	21.5
HRW	4	1	61.7	81.1	0.2	0.0	0.0	0.0	0.4	0.4	9.1	11.8	11.8	11.8	327	39.4	66.8	3.06	1.51	25.5
HRW	6/7	8	63.3	83.2	0.2	0.0	0.0	0.0	0.5	0.5	9.5	11.8	10.1	14.3	345	31.1	74.9	2.64	1.32	27.5
HRW	8	19	62.9	82.6	0.3	0.0	0.0	0.0	0.4	0.4	9.3	11.6	9.0	13.2	356	39.0	66.9	2.96	1.37	27.7
HRW	10	3	63.6	83.6	0.3	0.0	0.0	0.0	0.8	0.8	9.3	11.2	9.3	12.8	333	34.2	60.3	2.81	1.40	24.7
	Crop Year Average																			
HRW	2020	31	63.0	82.8	0.3	0.0	0.0	0.0	0.4	0.5	9.4	11.6			350	36.5	68.3	2.86	1.37	27.3
HRW	2019	105	62.6	82.2	0.4	0.0	0.0	0.1	0.5	0.6	9.6	11.4			346	36.2	63.4	2.87	1.34	25.9
HRS	5	2	64.4	84.6	0.6	0.0	0.0	0.0	0.3	0.3	9.2	13.4	13.2	13.5	322	35.7	70.6	2.88	1.61	32.2
HRS	6/7	4	62.9	82.7	0.2	0.0	0.2	0.0	0.4	0.6	8.9	14.2	13.7	14.5	360	34.9	69.3	2.86	1.61	38.3
HRS	8	8	63.0	82.9	0.4	0.0	0.1	0.0	0.4	0.5	9.3	13.9	12.5	15.9	377	35.2	70.2	2.83	1.60	35.9
	Crop Year Average																			
HRS	2020	14	63.2	83.1	0.3	0.0	0.1	0.0	0.4	0.5	9.2	13.9			364	35.2	70.0	2.85	1.61	36.0
HRS	2019	58	63.0	82.8	0.4	0.0	0.1	0.0	0.6	0.7	9.7	14.4			369	32.8	69.0	2.79	1.57	36.6



BY PRODUCTION ZONES

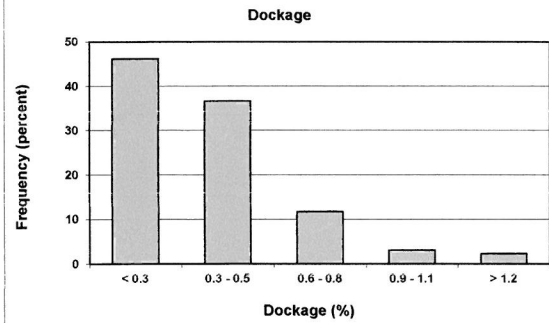
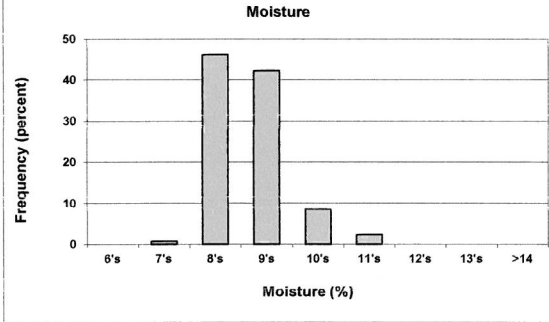
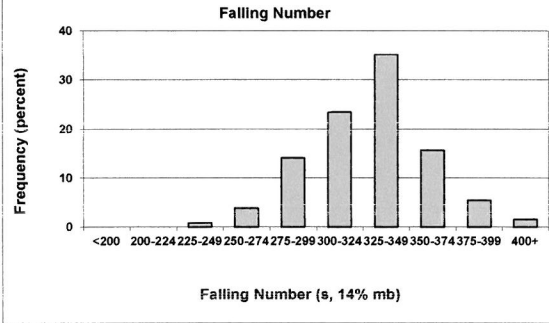
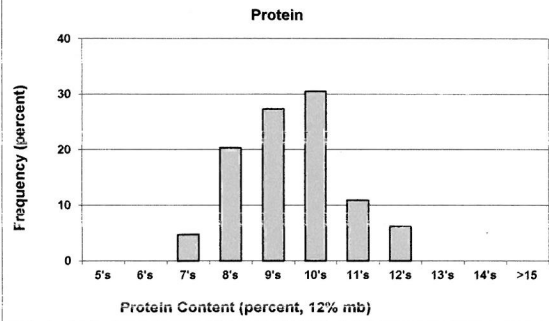
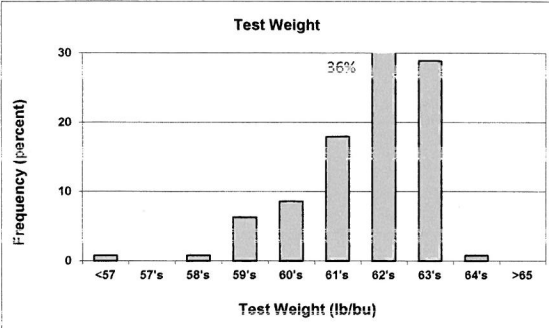
Table 2

2020 CROP WEEK 2 August 13, 2020																				
		Grading Data										Quality Data								
Class	District	Number of Samples	Test Weight (lb/bu)	Test Weight (kg/Hl)	Dockage (%)	Heat Damage (%)	Total Damage (%)	Foreign Material (%)	Shrunk & Broken (%)	Total Defects (%)	Moisture (%)	Protein (% 12% mb)			Falling Number (s. 14%mb)	Thousand Kernel Weight (g. 14% mb)	Kernel Hardness (20 to 120)	Kernel Size (mm)	Ash (%. 14% mb)	Wet Gluten (%. 14% mb)
												Average	Low	High						
SWH	NC	105	62.0	81.5	0.4	0.0	0.0	0.0	0.4	0.4	9.0	9.9	7.0	12.7	329	35.0	32.7	2.74	1.24	24.4
SWH	C	23	62.7	82.5	0.5	0.0	0.0	0.0	0.3	0.3	9.4	9.8	8.4	11.9	317	37.1	34.0	2.81	1.29	23.8
	Crop Year Average																			
SWH	2020	128	62.1	81.7	0.4	0.0	0.0	0.0	0.4	0.4	9.1	9.9			324	35.4	32.9	2.75	1.25	24.3
SWH	2019	438	61.6	81.0	0.5	0.0	0.0	0.0	0.5	0.5	9.9	10.0			307	36.4	23.4	2.77	1.35	23.9
WHCB	NC	25	61.6	81.0	0.4	0.0	0.0	0.0	0.7	0.8	8.6	9.9	6.6	12.1	316	34.0	31.1	2.63	1.24	17.8
WHCB	C	3	61.8	81.3	0.3	0.0	0.0	0.0	0.6	0.6	9.0	10.7	9.9	12.0	277	32.7	32.8	2.61	1.24	18.3
	Crop Year Average																			
WHCB	2020	28	61.6	81.1	0.3	0.0	0.0	0.0	0.7	0.8	8.7	10.0			311	33.9	31.3	2.63	1.24	17.8
WHCB	2019	113	60.6	79.7	0.8	0.0	0.0	0.1	1.2	1.2	9.3	9.8			314	31.0	21.2	2.54	1.29	21.5
HRW	NC	27	63.0	82.9	0.3	0.0	0.0	0.0	0.5	0.5	9.4	11.6	9.0	14.3	347	37.3	67.1	2.89	1.36	27.2
HRW	C	4	62.9	82.7	0.2	0.0	0.0	0.0	0.4	0.4	9.4	11.8	11.1	12.8	367	31.1	76.4	2.65	1.39	27.4
	Crop Year Average																			
HRW	2020	31	63.0	82.8	0.3	0.0	0.0	0.0	0.4	0.5	9.4	11.6			350	36.5	68.3	2.86	1.37	27.3
HRW	2019	105	62.6	82.2	0.4	0.0	0.0	0.1	0.5	0.6	9.6	11.4			346	36.2	63.4	2.87	1.34	25.9
HRS	NC	11	62.8	82.6	0.3	0.0	0.1	0.0	0.4	0.5	9.1	14.1	12.5	15.9	377	34.4	70.6	2.82	1.62	36.6
HRS	C	3	64.6	84.9	0.4	0.0	0.0	0.0	0.2	0.2	9.3	13.5	13.2	13.7	320	37.9	67.9	2.95	1.57	34.0
	Crop Year Average																			
HRS	2020	14	63.2	83.1	0.3	0.0	0.1	0.0	0.4	0.5	9.2	13.9			364	35.2	70.0	2.85	1.61	36.0
HRS	2019	58	63.0	82.8	0.4	0.0	0.1	0.0	0.6	0.7	9.7	14.4			369	32.8	69.0	2.79	1.57	36.6

Distributions

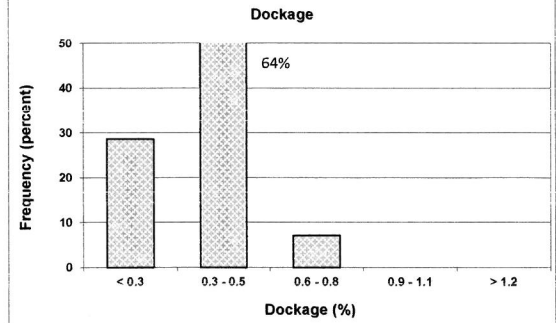
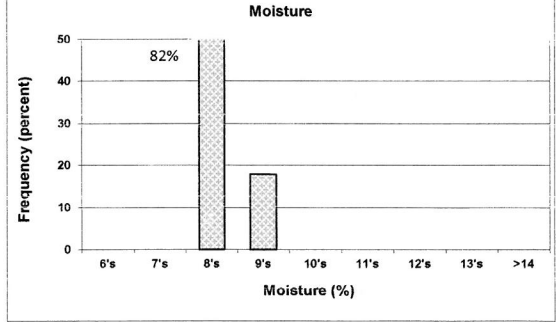
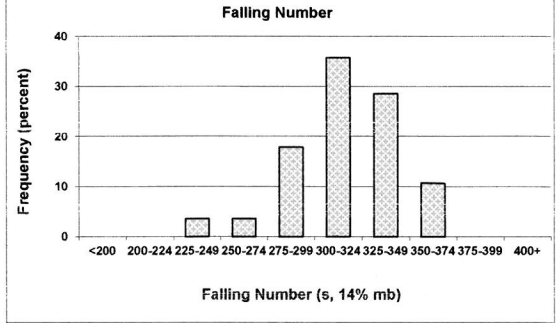
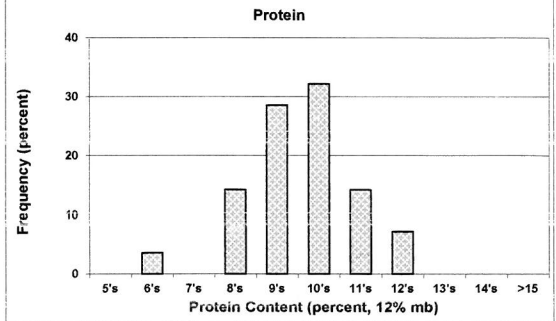
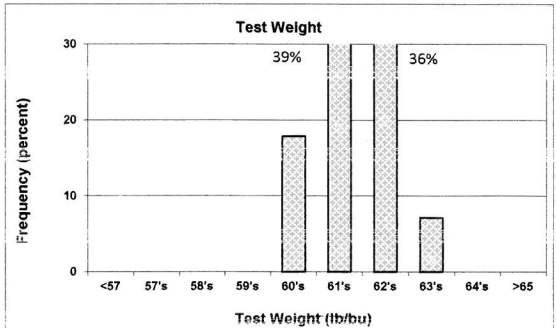
SOFT WHITE WHEAT

128 SAMPLES



WHITE CLUB WHEAT

28 SAMPLES



Prepared by: Wheat Marketing Center, Portland, Oregon