



2020 PACIFIC NORTHWEST CROP QUALITY REPORT

WEEK 4: AUGUST 27, 2020

We received 451 samples by the end of the fourth week reporting period for the 2020 Pacific Northwest wheat harvest.

Of the 75 wheat samples we received in the fourth week, 49 were soft white (SWH), 13 were white club (WHCB), 6 were hard red winter (HRW), 1 was hard red spring (HRS), and 6 were hard white (HDWH). Twenty-one samples (28%) came from District 8 (East Central Washington), 20 (27%) came from District 13 (South Central Idaho), 11 (15%) came from District 4 (North Central Oregon), 9 (12%) came from District 5 (Northeastern Oregon), and less than 10% each came from District 9 (Northeastern Washington), District 11 (Northern Idaho), and District 12 (Southwestern Idaho).

USDA Economic Statistics Districts (Table 1) showed the following: Test weight averages for SWH ranged from 58.5 to 63.3 lb/bu, and dockage ranged from 0.1 to 1.3%. Wheat moisture content averages ranged from 8.5 to 10.4%. Average SWH wheat protein content (12% mb) remained the same at 9.7% as last week. SWH falling number average value (14% mb) remained the same at 323 seconds as last week. Average WHCB test weight is higher than last year at 61.7 lb/bu. Average WHCB wheat protein (12% mb) was higher at 10.0% than 9.8% last year. Average WHCB falling number value (14% mb) was 318 seconds. WHCB had heavier thousand kernel weight and larger kernel size than last year. Both HRW and HRS averages remained similar to last week with similar test weights, similar protein contents, similar falling number values, heavier thousand kernel weights, and similar kernel sizes when compared to last year.

We will continue to report the six PNW Production Zones (Table 2): Northwest (NW), Southwest (SW), North Central (NC), Central (C), Northeast (NE), and Southeast (SE). The Zones are based on country elevator locations and climatic conditions. Twenty-eight percent each of this week's samples came from Zones NC and SE, 27% came from Zone C, and 13% came from Zone NE.

So far, SWH had similar test weight, slightly lower dockage, similar grading factors, lower moisture, lower protein content, similar falling number, similar thousand kernel weight, and similar kernel size when compared to last year. WHCB had higher test weight, lower moisture, higher protein, similar falling number, heavier thousand kernel weight, and larger kernels when compared to last year.



BY USDA ECONOMIC STATISTICS DISTRICTS

Table 1

2020 CROP WEEK 4: August 27, 2020																					
		Grading Data										Quality Data									
Class	District	Number of Samples	Test Weight (lb/bu)	Test Weight (kg/ht)	Dockage (%)	Heat Damage (%)	Total Damage (%)	Foreign Material (%)	Shrunk & Broken (%)	Total Defects (%)	Moisture (%)	Protein (% 12% mb)			Falling Number (t. 14%mb)	Thousand Kernel Weight (g. 14% mb)	Kernel Hardness (-20 to 120)	Kernel Size (mm)	Ash (% 14% mb)	Wet Gluten (% 14% mb)	
												Average	Low	High							
SWH	112	17	58.5	77.1	0.6	0.0	0.1	0.0	0.4	0.5	10.4	8.7	7.3	10.6	318	37.9	28.5	2.88	1.45	19.4	
SWH	3	2	59.0	77.6	1.3	0.0	0.0	0.0	0.5	0.5	10.2	11.3	10.8	11.8	330	41.0	29.9	2.89	1.58	22.6	
SWH	4	36	62.3	81.9	0.5	0.0	0.0	0.0	0.4	0.4	8.9	10.0	7.7	14.1	325	35.5	34.4	2.79	1.31	25.0	
SWH	5	21	62.3	81.9	0.5	0.0	0.1	0.0	0.4	0.5	8.5	9.4	8.1	10.8	327	36.2	32.5	2.83	1.41	23.2	
SWH	617	16	62.9	82.7	0.3	0.0	0.0	0.0	0.4	0.4	9.6	10.1	8.8	12.3	318	35.6	34.6	2.72	1.18	25.3	
SWH	8	126	62.1	81.6	0.4	0.0	0.0	0.0	0.5	0.5	8.9	9.9	7.0	12.7	325	35.0	32.7	2.73	1.24	24.3	
SWH	9	7	61.5	80.9	0.5	0.0	0.0	0.0	0.8	0.9	10.1	9.0	7.3	10.2	338	36.4	31.2	2.75	1.26	18.9	
SWH	10	32	62.6	82.3	0.3	0.0	0.1	0.0	0.3	0.4	8.8	9.9	8.1	12.1	329	37.4	30.4	2.85	1.37	23.1	
SWH	11	17	63.3	83.2	0.3	0.0	0.0	0.0	0.3	0.4	9.9	8.8	7.7	9.8	321	38.1	31.1	2.81	1.36	20.0	
SWH	12	6	61.7	81.1	0.3	0.0	0.3	0.0	0.3	0.6	9.7	9.9	8.5	10.8	290	42.7	28.2	2.93	1.56	23.2	
SWH	13	11	61.5	80.9	0.4	0.0	0.2	0.0	0.4	0.6	9.5	9.8	8.9	11.2	305	38.8	28.0	2.81	1.54	22.5	
SWH	14	6	62.3	81.8	0.1	0.0	0.0	0.0	0.4	0.4	8.7	9.4	8.8	10.9	318	35.7	30.4	2.69	1.52	19.6	
	Crop Year Average																				
SWH	2020	297	62.0	81.6	0.4	0.0	0.0	0.0	0.4	0.5	9.1	9.7			323	36.2	32.0	2.78	1.32	23.4	
SWH	2019	438	61.6	81.0	0.5	0.0	0.0	0.0	0.5	0.5	9.9	10.0			307	36.4	23.4	2.77	1.35	23.9	
WHCB	5	2	58.2	76.5	0.7	0.0	0.5	0.1	0.8	1.3	9.1	11.5	10.2	12.8	357	25.4	32.0	2.51	1.50	22.7	
WHCB	617	4	61.6	81.0	0.4	0.0	0.0	0.0	0.8	0.8	8.7	11.0	9.9	12.0	290	33.5	33.6	2.62	1.28	15.1	
WHCB	8	68	61.9	81.4	0.4	0.0	0.0	0.0	0.7	0.8	8.3	9.8	6.6	12.5	316	33.4	31.2	2.62	1.24	18.3	
WHCB	10	2	61.5	80.8	1.2	0.0	0.0	0.1	1.3	1.4	8.4	11.7	11.4	11.9	415	30.6	39.4	2.63	1.63	15.8	
	Crop Year Average																				
WHCB	2020	76	61.7	81.2	0.5	0.0	0.0	0.0	0.7	0.8	8.4	10.0			318	33.1	31.6	2.62	1.26	18.2	
WHCB	2019	113	60.6	79.7	0.8	0.0	0.0	0.1	1.2	1.2	9.3	9.8			314	31.0	21.2	2.54	1.29	21.5	
HRW	4	4	61.9	81.4	0.5	0.0	0.0	0.0	0.4	0.5	8.6	11.8	11.4	12.1	357	35.8	70.7	2.90	1.40	27.9	
HRW	5	1	63.2	83.1	0.5	0.0	0.0	0.0	0.2	0.2	10.0	12.0	12.0	12.0	294	37.6	66.7	2.88	1.21	24.2	
HRW	617	9	63.4	83.4	0.2	0.0	0.0	0.0	0.5	0.5	9.4	11.9	10.1	14.3	352	31.8	73.7	2.66	1.32	27.7	
HRW	8	19	62.9	82.6	0.3	0.0	0.0	0.0	0.4	0.4	9.3	11.6	9.0	13.2	356	39.0	66.9	2.96	1.37	27.7	
HRW	10	3	63.6	83.6	0.3	0.0	0.0	0.0	0.8	0.8	9.3	11.2	9.3	12.8	333	34.2	60.3	2.81	1.40	24.7	
HRW	12	2	60.5	79.6	0.8	0.0	0.0	0.0	0.3	0.3	10.1	11.0	11.0	11.0	338	34.9	67.9	2.79	1.53	25.7	
HRW	13	3	63.6	83.5	0.4	0.0	0.1	0.0	0.8	0.9	8.0	11.0	10.3	11.7	387	37.8	65.4	2.85	1.50	28.2	
HRW	14	4	62.5	82.2	0.0	0.0	0.0	0.0	0.4	0.5	10.2	11.1	10.3	11.5	349	37.4	70.0	2.93	1.45	26.5	
	Crop Year Average																				
HRW	2020	45	62.9	82.6	0.3	0.0	0.0	0.0	0.4	0.5	9.3	11.6			353	36.6	68.4	2.86	1.38	27.3	
HRW	2019	105	62.6	82.2	0.4	0.0	0.0	0.1	0.5	0.6	9.6	11.4			346	36.2	63.4	2.87	1.34	25.9	
HRS	4	2	62.8	82.5	0.3	0.0	0.0	0.0	0.3	0.3	8.2	13.8	13.1	14.5	363	38.1	66.0	2.91	1.53	34.2	
HRS	5	4	61.6	81.0	1.1	0.0	0.7	0.0	0.3	1.0	9.0	13.5	13.2	13.7	350	34.3	71.0	2.83	1.68	32.7	
HRS	617	4	62.9	82.7	0.2	0.0	0.2	0.0	0.4	0.6	8.9	14.2	13.7	14.5	360	34.9	69.3	2.86	1.61	38.3	
HRS	8	11	62.5	82.2	0.4	0.0	0.0	0.0	0.5	0.6	9.1	14.0	11.9	15.9	382	33.2	72.2	2.77	1.62	35.4	
HRS	10	4	64.0	84.0	0.2	0.0	0.0	0.0	0.4	0.4	8.9	14.4	12.7	15.2	369	35.0	69.0	2.87	1.50	40.1	
HRS	12	1	64.1	84.2	0.1	0.0	0.0	0.0	0.1	0.1	9.2	14.2	14.2	14.2	349	34.7	68.6	2.91	1.62	45.0	
	Crop Year Average																				
HRS	2020	26	62.7	82.5	0.4	0.0	0.1	0.0	0.4	0.6	9.0	14.0			369	34.3	70.4	2.83	1.60	36.4	
HRS	2019	58	63.0	82.8	0.4	0.0	0.1	0.0	0.6	0.7	9.7	14.4			369	32.8	69.0	2.79	1.57	36.6	



BY PRODUCTION ZONES

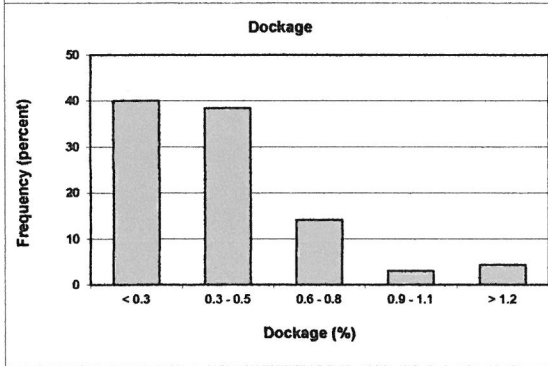
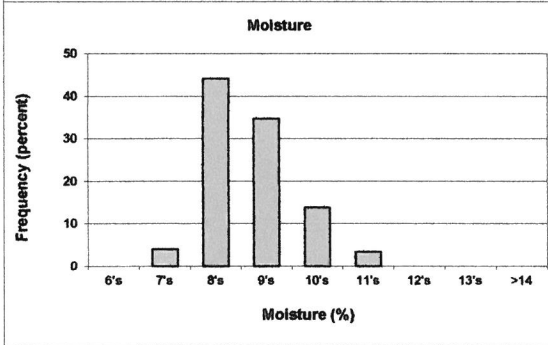
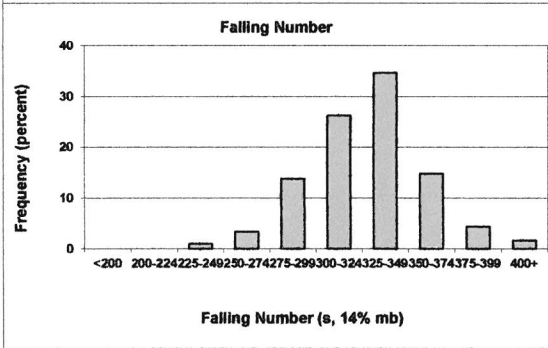
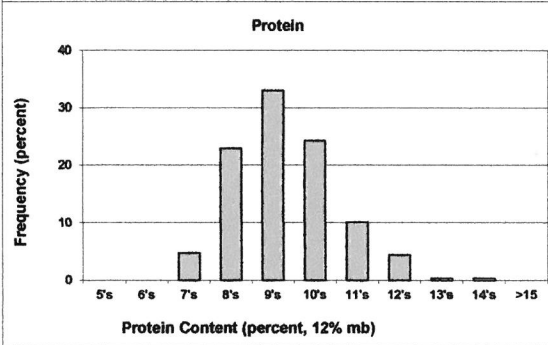
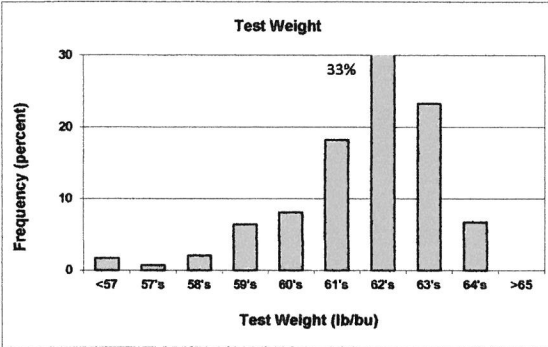
Table 2

2020 CROP WEEK 4: August 27, 2020																				
		Grading Data										Quality Data								
Class	District	Number of Samples	Test Weight (lbBu)	Test Weight (gpl)	Dockage (%)	Heat Damage (%)	Total Damage (%)	Foreign Material (%)	Shrunk & Broken (%)	Total Defects (%)	Moisture (%)	Protein (% 12% mb)			Falling Number (s. 14%mb)	Thousand Kernel Weight (g. 14% mb)	Kernel Hardness (20 to 120)	Kernel Size (mm)	Ash (%. 14% mb)	Wet Gluten (%. 14% mb)
												Average	Low	High						
SWH	NC	162	62.2	81.7	0.4	0.0	0.0	0.0	0.4	0.5	8.9	9.9	7.0	12.7	329	35.2	32.3	2.75	1.26	24.2
SWH	NE	31	63.0	82.8	0.3	0.0	0.0	0.0	0.4	0.5	9.9	9.0	7.3	10.2	327	38.6	31.5	2.81	1.32	20.2
SWH	C	62	62.4	82.0	0.5	0.0	0.0	0.0	0.4	0.4	8.8	9.8	7.7	14.1	325	35.7	33.8	2.80	1.34	24.5
SWH	SW	17	58.5	77.1	0.6	0.0	0.1	0.0	0.4	0.5	10.4	8.7	7.3	10.6	318	37.9	28.5	2.88	1.45	19.4
SWH	SE	25	61.5	80.9	0.4	0.0	0.2	0.0	0.4	0.6	9.4	9.8	8.5	11.8	305	39.2	28.8	2.82	1.54	22.0
	Crop Year Average																			
SWH	2020	297	62.0	81.6	0.4	0.0	0.0	0.0	0.4	0.5	9.1	9.7			323	36.2	32.0	2.78	1.32	23.4
SWH	2019	438	61.6	81.0	0.5	0.0	0.0	0.0	0.5	0.5	9.9	10.0			307	36.4	23.4	2.77	1.35	23.9
WHCB	NC	72	61.9	81.3	0.4	0.0	0.0	0.0	0.7	0.8	8.3	9.9	6.6	12.5	318	33.3	31.5	2.62	1.26	18.1
WHCB	C	4	59.8	78.7	0.5	0.0	0.2	0.0	0.7	1.0	8.9	11.2	9.9	12.8	301	29.3	32.5	2.56	1.37	19.8
	Crop Year Average																			
WHCB	2020	76	61.7	81.2	0.5	0.0	0.0	0.0	0.7	0.8	8.4	10.0			318	33.1	31.6	2.62	1.26	18.2
WHCB	2019	113	60.6	79.7	0.8	0.0	0.0	0.1	1.2	1.2	9.3	9.8			314	31.0	21.2	2.54	1.29	21.5
HRW	NC	28	63.1	82.9	0.3	0.0	0.0	0.0	0.4	0.5	9.3	11.7	9.0	14.3	349	37.4	67.1	2.89	1.36	27.3
HRW	C	8	62.6	82.2	0.4	0.0	0.0	0.0	0.4	0.4	9.1	11.8	11.1	12.8	356	33.3	73.5	2.75	1.36	27.5
HRW	SE	9	62.4	82.1	0.3	0.0	0.0	0.0	0.5	0.6	9.4	11.0	10.3	11.7	358	37.0	68.0	2.87	1.48	26.9
	Crop Year Average																			
HRW	2020	45	62.9	82.6	0.3	0.0	0.0	0.0	0.4	0.5	9.3	11.6			353	36.6	68.4	2.86	1.38	27.3
HRW	2019	105	62.6	82.2	0.4	0.0	0.0	0.1	0.5	0.6	9.6	11.4			346	36.2	63.4	2.87	1.34	25.9
HRS	NC	18	62.8	82.5	0.3	0.0	0.1	0.0	0.5	0.6	9.0	14.1	11.9	15.9	378	33.5	71.4	2.80	1.60	37.0
HRS	C	7	62.4	82.0	0.7	0.0	0.4	0.0	0.3	0.6	8.9	13.6	13.1	14.5	348	36.6	68.4	2.89	1.61	33.8
HRS	SE	1	64.1	84.2	0.1	0.0	0.0	0.0	0.1	0.1	9.2	14.2	14.2	14.2	349	34.7	68.6	2.91	1.62	45.0
	Crop Year Average																			
HRS	2020	26	62.7	82.5	0.4	0.0	0.1	0.0	0.4	0.6	9.0	14.0			369	34.3	70.4	2.83	1.60	36.4
HRS	2019	58	63.0	82.8	0.4	0.0	0.1	0.0	0.6	0.7	9.7	14.4			369	32.8	69.0	2.79	1.57	36.6

Distributions

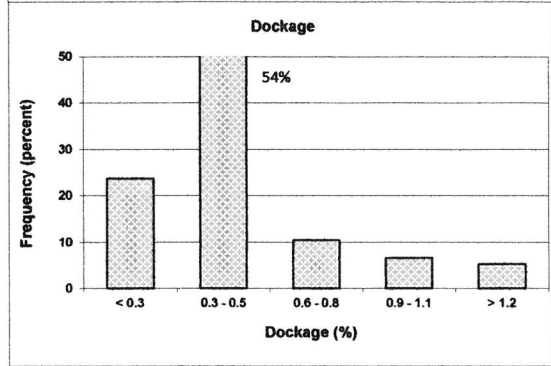
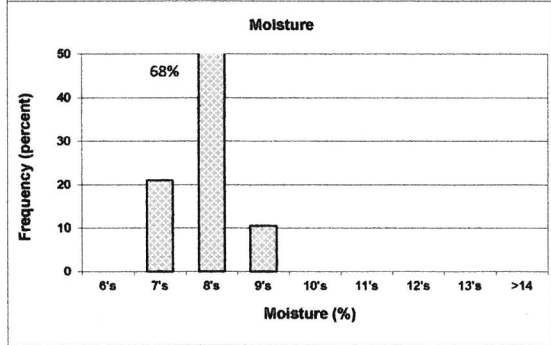
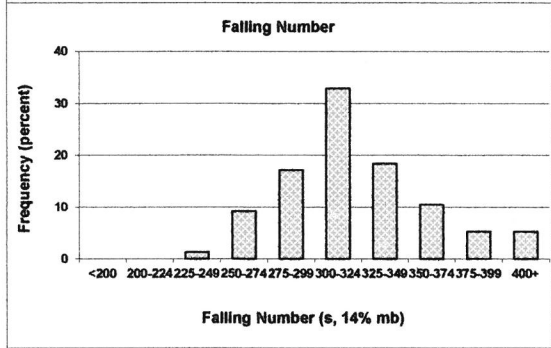
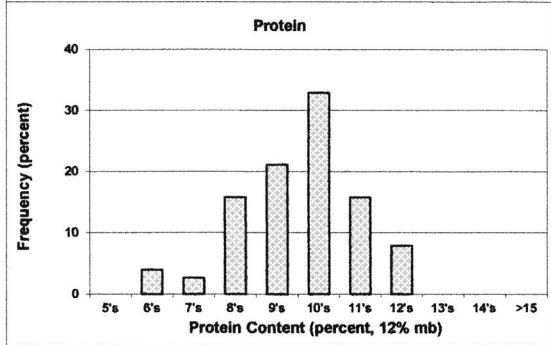
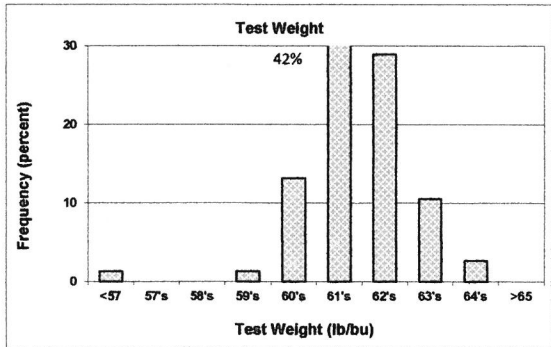
SOFT WHITE WHEAT

297 SAMPLES



WHITE CLUB WHEAT

76 SAMPLE



Prepared by: Wheat Marketing Center, Portland, Oregon