



2020 PACIFIC NORTHWEST CROP QUALITY REPORT

WEEK 5: September 3, 2020

We received and tested 537 samples so far for the Pacific Northwest 2019 wheat harvest.

Of the 86 wheat samples received for the fifth week, 44 were soft white (SWH), 8 were white club (WHCB), 15 were hard red winter (HRW), 15 were hard red spring (HRS), and 4 were hard white (HDWH). Thirty-four samples (40%) came from District 11 (Northern Idaho); 26 (30%) were from District 14 (Southeastern Idaho); Less than 10 each were from District 3 (Southeastern Oregon), 4 (North Central Oregon), 5 (Northeastern Oregon), 6\7 (Western Washington), and 13 (South Central Idaho).

USDA Economic Statistics Districts (Table 1) showed the following:

SWH average test weight was 62.0 lb/bu up from 61.6 lb/bu last year, average moisture was 9.1% compared down from 9.9% last year, average protein (12% mb) was 9.7% down from 10.0% last year, and average falling number value was 323 seconds up from 307 seconds last year. SWH samples had heavy thousand kernel weight and large kernel size. The highest SWH whole meal wet gluten value (14% mb) was shown in District 4 at 25.5% followed by Districts 6\7 at 25.4% with both at 10.1% protein content (12% mb). WHCB weighted averages showed 8.4% wheat moisture, 9.9% (12% mb) wheat protein, and 319 seconds (14% mb) falling number value. HRW and HRS weighted averages indicated similar test weight, lower moisture, slightly lower protein content, and similar falling number values when compared to last year.

We continue to report results from the six PNW Production Zones (Table 2): Northwest (NW), Southwest (SW), North Central (NC), Central (C), Northeast (NE), and Southeast (SE). The Zones are based on country elevator locations and climatic conditions. This week samples came from Zones NE and SE (40%) and C (20%).

The SWH average protein (12% mb) was the highest for Zone NC, NE, and SE at 9.9%, and the lowest for Zone SW at 8.7%. The WHCB average protein (12% mb) was the highest at 10.8% for Zone C followed by 9.9% for Zone NC with 6 and 72 samples, respectively.



BY USDA ECONOMIC STATISTICS DISTRICTS

Table 1

2020 CROP WEEK 5: September 3, 2020																				
Grading Data											Quality Data									
Class	District	Number of Samples	Test Weight (lbBu)	Test Weight (kg/Hl)	Dockage (%)	Heat Damage (%)	Total Damage (%)	Foreign Material (%)	Shrunk & Broken (%)	Total Defects (%)	Moisture (%)	Protein (% 12% mb)			Falling Number (s, 14%mb)	Thousand Kernel Weight (g, 14% mb)	Kernel Hardness (20 to 120)	Kernel Size (mm)	Ash (% 14% mb)	Wet Gluten (% 14% mb)
												Average	Low	High						
SWH	112	17	58.5	77.1	0.6	0.0	0.1	0.0	0.4	0.5	10.4	8.7	7.3	10.6	318	37.9	28.5	2.88	1.45	19.4
SWH	3	2	59.0	77.6	1.3	0.0	0.0	0.0	0.5	0.5	10.2	11.3	10.8	11.8	330	41.0	29.9	2.89	1.58	22.6
SWH	4	43	62.0	81.6	0.6	0.0	0.0	0.0	0.6	0.6	8.9	10.1	7.7	14.1	328	34.8	33.6	2.77	1.33	25.5
SWH	5	27	62.1	81.7	0.5	0.0	0.1	0.0	0.5	0.6	8.5	9.5	8.1	10.8	325	36.5	31.7	2.83	1.41	23.3
SWH	617	17	62.9	82.7	0.4	0.0	0.0	0.0	0.4	0.4	9.6	10.1	8.8	12.3	319	35.6	34.6	2.72	1.20	25.4
SWH	8	126	62.1	81.6	0.4	0.0	0.0	0.0	0.5	0.5	8.9	9.9	7.0	12.7	325	35.0	32.7	2.73	1.24	24.3
SWH	9	7	61.5	80.9	0.5	0.0	0.0	0.0	0.8	0.9	10.1	9.0	7.3	10.2	338	36.4	31.2	2.75	1.26	18.9
SWH	10	32	62.6	82.3	0.3	0.0	0.1	0.0	0.3	0.4	8.8	9.9	8.1	12.1	329	37.4	30.4	2.85	1.37	23.1
SWH	11	29	63.4	83.3	0.3	0.0	0.0	0.0	0.4	0.4	9.6	9.0	7.7	9.8	321	38.2	31.3	2.82	1.38	20.4
SWH	12	6	61.7	81.1	0.3	0.0	0.3	0.0	0.3	0.6	9.7	9.9	8.5	10.8	290	42.7	28.2	2.93	1.56	23.2
SWH	13	11	61.5	80.9	0.4	0.0	0.2	0.0	0.4	0.6	9.5	9.8	8.9	11.2	305	38.8	28.0	2.81	1.54	22.5
SWH	14	24	61.6	81.0	0.5	0.0	0.0	0.0	0.4	0.4	9.2	9.8	8.1	11.5	315	35.8	29.2	2.72	1.54	22.0
	Crop Year Average																			
SWH	2020	341	62.0	81.5	0.4	0.0	0.0	0.0	0.4	0.5	9.1	9.7			323	36.1	31.8	2.78	1.34	23.4
SWH	2019	438	61.6	81.0	0.5	0.0	0.0	0.0	0.5	0.5	9.9	10.0			307	36.4	23.4	2.77	1.35	23.9
WHCB	4	1	52.0	68.6	4.0	0.0	0.0	0.1	5.2	5.3	8.2	12.4	12.4	12.4	358	17.5	40.7	2.22	1.64	32.7
WHCB	5	3	59.0	77.7	0.5	0.0	0.3	0.0	0.6	1.0	8.9	10.2	7.7	12.8	345	27.3	30.7	2.54	1.39	20.2
WHCB	617	4	61.6	81.0	0.4	0.0	0.0	0.0	0.8	0.8	8.7	11.0	9.9	12.0	290	33.5	33.6	2.62	1.28	15.1
WHCB	8	68	61.9	81.4	0.4	0.0	0.0	0.0	0.7	0.8	8.3	9.8	6.6	12.5	316	33.4	31.2	2.62	1.24	18.3
WHCB	10	2	61.5	80.8	1.2	0.0	0.0	0.1	1.3	1.4	8.4	11.7	11.4	11.9	415	30.6	39.4	2.63	1.63	15.8
WHCB	11	6	61.5	80.9	0.6	0.0	0.0	0.0	1.0	1.0	9.3	8.8	8.1	9.2	325	32.0	31.8	2.60	1.33	16.2
	Crop Year Average																			
WHCB	2020	84	61.6	81.0	0.5	0.0	0.0	0.0	0.8	0.9	8.4	9.9			319	32.8	31.7	2.61	1.27	18.2
WHCB	2019	113	60.6	79.7	0.8	0.0	0.0	0.1	1.2	1.2	9.3	9.8			314	31.0	21.2	2.54	1.29	21.5
HRW	3	2	58.55	77.066	1.2	0.00	0	0.15	0.15	0.3	8.7	9.45	9.0	9.9	312	37.1	56.0	2.99	1.36	19.7
HRW	4	5	61.9	81.4	0.4	0.0	0.0	0.0	0.4	0.5	8.6	11.7	11.4	12.1	358	35.5	71.3	2.88	1.44	28.0
HRW	5	1	63.2	83.1	0.5	0.0	0.0	0.0	0.2	0.2	10.0	12.0	12.0	12.0	294	37.6	66.7	2.88	1.21	24.2
HRW	617	9	63.4	83.4	0.2	0.0	0.0	0.0	0.5	0.5	9.4	11.9	10.1	14.3	352	31.8	73.7	2.86	1.32	27.7
HRW	8	19	62.9	82.6	0.3	0.0	0.0	0.0	0.4	0.4	9.3	11.6	9.0	13.2	356	39.0	66.9	2.96	1.37	27.7
HRW	10	3	63.6	83.6	0.3	0.0	0.0	0.0	0.8	0.8	9.3	11.2	9.3	12.8	333	34.2	60.3	2.81	1.40	24.7
HRW	11	12	63.8	83.8	0.2	0.0	0.0	0.0	0.3	0.3	9.2	10.7	10.1	11.2	333	37.6	66.4	2.92	1.34	23.0
HRW	12	2	60.5	79.6	0.8	0.0	0.0	0.0	0.3	0.3	10.1	11.0	11.0	11.0	338	34.9	67.9	2.79	1.53	25.7
HRW	13	3	63.6	83.5	0.4	0.0	0.1	0.0	0.8	0.9	8.0	11.0	10.3	11.7	387	37.8	65.4	2.85	1.50	28.2
HRW	14	4	62.5	82.2	0.0	0.0	0.0	0.0	0.4	0.5	10.2	11.1	10.3	11.5	349	37.4	70.0	2.93	1.45	26.5
	Crop Year Average																			
HRW	2020	60	62.9	82.7	0.3	0.0	0.0	0.0	0.4	0.4	9.3	11.3			348	36.7	67.7	2.88	1.38	26.2
HRW	2019	105	62.6	82.2	0.4	0.0	0.0	0.1	0.5	0.6	9.6	11.4			346	36.2	63.4	2.87	1.34	25.9
HRS	4	2	62.8	82.5	0.3	0.0	0.0	0.0	0.3	0.3	8.2	13.8	13.1	14.5	363	38.1	66.0	2.91	1.53	34.2
HRS	5	5	61.6	81.1	1.0	0.0	0.5	0.0	0.3	0.9	9.0	13.4	13.0	13.7	355	34.1	72.2	2.82	1.67	32.1
HRS	617	4	62.9	82.7	0.2	0.0	0.2	0.0	0.4	0.6	8.9	14.2	13.7	14.5	360	34.9	69.3	2.86	1.61	38.3
HRS	8	11	62.5	82.2	0.4	0.0	0.0	0.0	0.5	0.6	9.1	14.0	11.9	15.9	382	33.2	72.2	2.77	1.62	35.4
HRS	10	4	64.0	84.0	0.2	0.0	0.0	0.0	0.4	0.4	8.9	14.4	12.7	15.2	369	35.0	69.0	2.87	1.50	40.1
HRS	11	4	63.5	83.4	0.3	0.0	0.0	0.0	0.2	0.2	8.6	13.8	13.3	14.8	359	30.6	78.2	2.74	1.50	33.2
HRS	12	1	64.1	84.2	0.1	0.0	0.0	0.0	0.1	0.1	9.2	14.2	14.2	14.2	349	34.7	68.6	2.91	1.62	45.0
HRS	13	6	62.9	82.7	0.4	0.0	0.0	0.0	0.3	0.3	8.7	14.5	13.6	14.9	360	32.7	76.7	2.76	1.56	35.7
HRS	14	4	64.6	84.9	0.5	0.0	0.0	0.0	0.1	0.1	10.7	14.9	14.5	15.1	363	36.4	76.1	2.90	1.59	39.7
	Crop Year Average																			
HRS	2020	41	63.0	82.8	0.4	0.0	0.1	0.0	0.3	0.5	9.1	14.1			366	33.9	72.8	2.82	1.59	36.1
HRS	2019	58	63.0	82.8	0.4	0.0	0.1	0.0	0.6	0.7	9.7	14.4			369	32.8	69.0	2.79	1.57	36.6



BY PRODUCTION ZONES

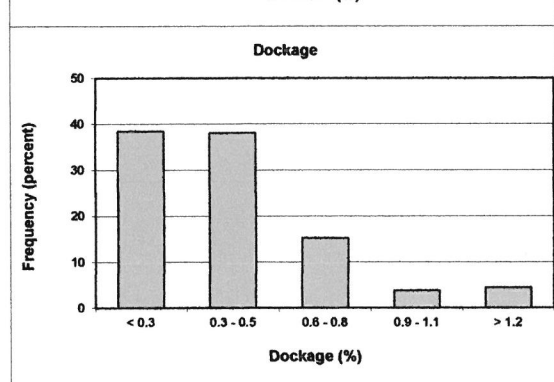
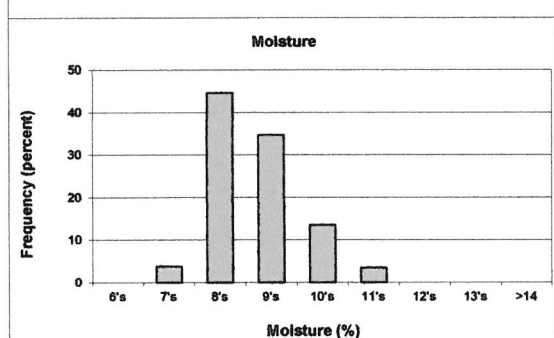
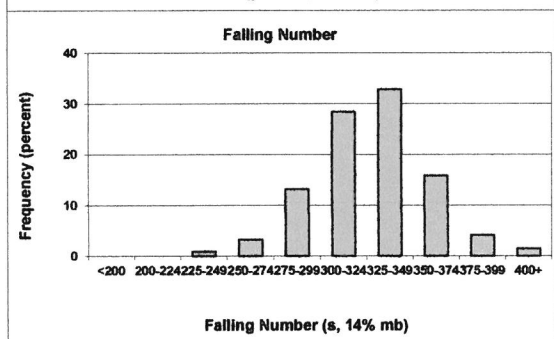
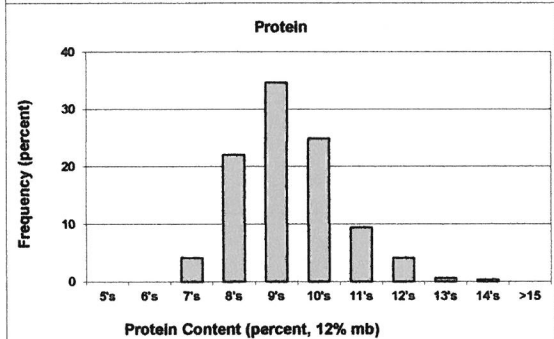
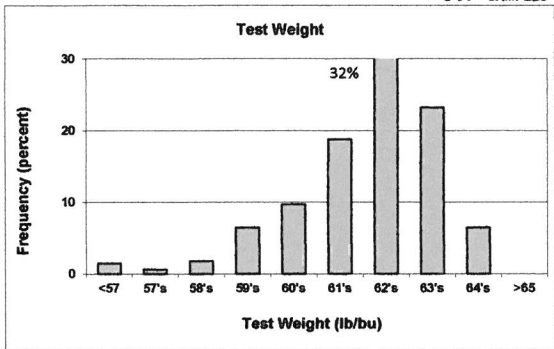
Table 2

2020 CROP WEEK 5: September 3, 2020																					
Grading Data												Quality Data									
Class	District	Number of Samples	Test Weight (lb/bu)	Test Weight (kg/hl)	Dockage (%)	Heat Damage (%)	Total Damage (%)	Foreign Material (%)	Shrunk & Broken (%)	Total Defects (%)	Moisture (%)	Protein (% 12% mb)			Falling Number (s. 14%mb)	Thousand Kernel Weight (g. 14% mb)	Kernel Hardness (30 to 120)	Kernel Size (mm)	Ash (%. 14% mb)	Wet Gluten (%. 14% mb)	
												Average	Low	High							
SWH	NC	162	62.2	81.7	0.4	0.0	0.0	0.0	0.4	0.5	8.9	9.9	7.0	12.7	329	35.2	32.3	2.75	1.26	24.2	
SWH	NE	43	63.1	83.0	0.3	0.0	0.0	0.0	0.4	0.5	9.7	9.1	7.3	10.2	325	38.5	31.6	2.82	1.35	20.4	
SWH	C	76	62.2	81.7	0.5	0.0	0.0	0.0	0.5	0.6	8.8	9.9	7.7	14.1	326	35.5	33.1	2.79	1.35	24.8	
SWH	SW	17	58.5	77.1	0.6	0.0	0.1	0.0	0.4	0.5	10.4	8.7	7.3	10.6	318	37.9	28.5	2.88	1.45	19.4	
SWH	SE	43	61.5	80.8	0.5	0.0	0.1	0.0	0.4	0.5	9.4	9.9	8.1	11.8	309	37.8	28.8	2.78	1.55	22.3	
		Crop Year Average																			
SWH	2020	341	62.0	81.5	0.4	0.0	0.0	0.0	0.4	0.5	9.1	9.7			323	36.1	31.8	2.78	1.34	23.4	
SWH	2019	438	61.6	81.0	0.5	0.0	0.0	0.0	0.5	0.5	9.9	10.0			307	36.4	23.4	2.77	1.35	23.9	
WHCB	NC	72	61.9	81.3	0.4	0.0	0.0	0.0	0.7	0.8	8.3	9.9	6.6	12.5	318	33.3	31.5	2.62	1.26	18.1	
WHCB	NE	6	61.5	80.9	0.6	0.0	0.0	0.0	1.0	1.0	9.3	8.8	8.1	9.2	325	32.0	31.8	2.60	1.33	16.2	
WHCB	C	6	58.7	77.2	1.0	0.0	0.2	0.0	1.4	1.6	8.7	10.8	7.7	12.8	313	27.6	33.1	2.51	1.38	21.2	
		Crop Year Average																			
WHCB	2020	84	61.6	81.0	0.5	0.0	0.0	0.0	0.8	0.9	8.4	9.9			319	32.8	31.7	2.61	1.27	18.2	
WHCB	2019	113	60.6	79.7	0.8	0.0	0.0	0.1	1.2	1.2	9.3	9.8			314	31.0	21.2	2.54	1.29	21.5	
HRW	NC	28	63.1	82.9	0.3	0.0	0.0	0.0	0.4	0.5	9.3	11.7	9.0	14.3	349	37.4	67.1	2.89	1.36	27.3	
HRW	NE	12	63.8	83.8	0.2	0.0	0.0	0.0	0.3	0.3	9.2	10.7	10.1	11.2	333	37.6	66.4	2.92	1.34	23.0	
HRW	C	9	62.5	82.2	0.4	0.0	0.0	0.0	0.4	0.4	9.1	11.7	11.1	12.8	357	33.4	73.5	2.76	1.38	27.6	
HRW	SE	11	61.7	81.1	0.5	0.0	0.0	0.0	0.4	0.5	9.3	10.8	9.0	11.7	348	37.0	65.8	2.90	1.46	25.6	
		Crop Year Average																			
HRW	2020	60	62.9	82.7	0.3	0.0	0.0	0.0	0.4	0.4	9.3	11.3			348	36.7	67.7	2.88	1.38	26.2	
HRW	2019	105	62.6	82.2	0.4	0.0	0.0	0.1	0.5	0.6	9.6	11.4			346	36.2	63.4	2.87	1.34	25.9	
HRS	NC	18	62.8	82.5	0.3	0.0	0.1	0.0	0.5	0.6	9.0	14.1	11.9	15.9	378	33.5	71.4	2.80	1.60	37.0	
HRS	NE	4	63.5	83.4	0.3	0.0	0.0	0.0	0.2	0.2	8.6	13.8	13.3	14.8	359	30.6	78.2	2.74	1.50	33.2	
HRS	C	8	62.3	82.0	0.7	0.0	0.3	0.0	0.3	0.6	8.9	13.6	13.0	14.5	352	36.2	69.4	2.88	1.61	33.3	
HRS	SE	11	63.6	83.6	0.4	0.0	0.0	0.0	0.2	0.2	9.5	14.6	13.6	15.1	360	34.3	75.8	2.83	1.58	38.0	
		Crop Year Average																			
HRS	2020	41	63.0	82.8	0.4	0.0	0.1	0.0	0.3	0.5	9.1	14.1			366	33.9	72.8	2.82	1.59	36.1	
HRS	2019	58	63.0	82.8	0.4	0.0	0.1	0.0	0.6	0.7	9.7	14.4			369	32.8	69.0	2.79	1.57	36.6	

Distributions

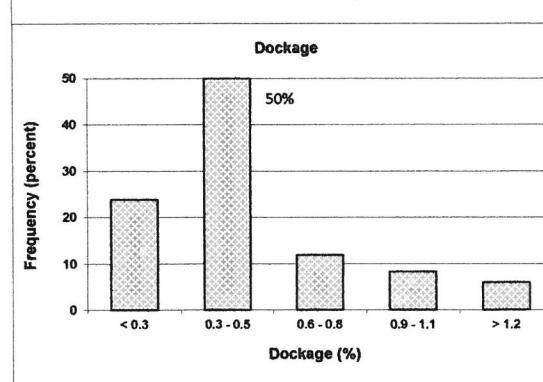
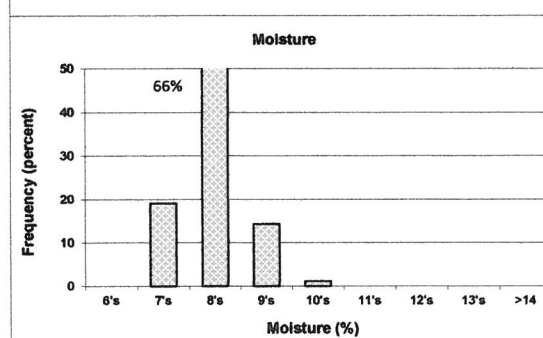
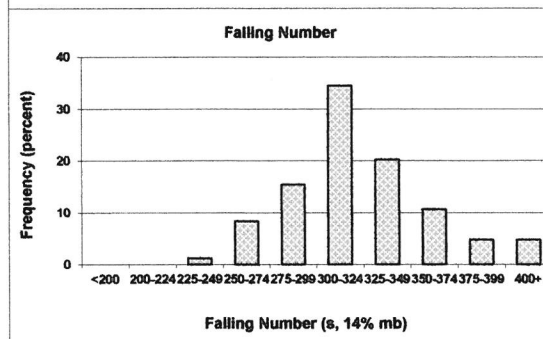
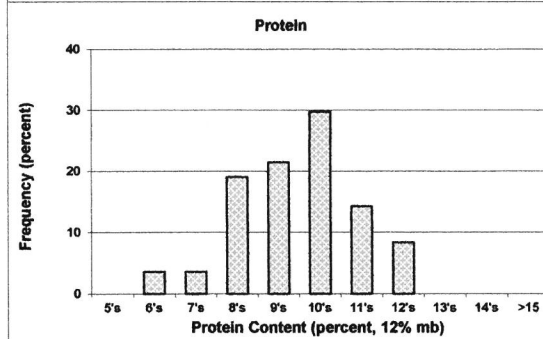
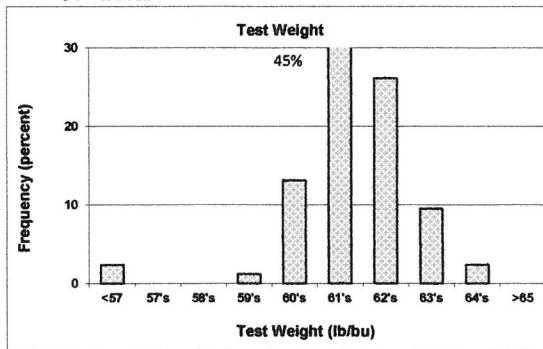
SOFT WHITE WHEAT

341 SAMPLES



WHITE CLUB WHEAT

84 SAMPLE



Prepared by: Wheat Marketing Center, Portland, Oregon