



2019 PACIFIC NORTHWEST CROP QUALITY REPORT

WEEK 6: September 10, 2020

We received and tested 613 samples at the end of the sixth week for the Pacific Northwest 2020 wheat harvest.

Of the 76 wheat samples tested for this week, 42 were soft white (SWH) and 11 were white club (WHCB), 6 were hard red winter (HRW), 11 were hard red spring (HRS), 4 were hard white (HDWH), and one was western white (WWH). Thirty-two samples (42%) came from District 14 (Southeastern Idaho), 15 (20%) came from District 8 (East Central Washington), 8 (11%) each came from Districts 4 (North Central Oregon), 9 (Northeastern Washington), and 10 (Southeastern Washington), and a few each came from Districts 5 (Northeastern Oregon) and 12 (Western Oregon).

USDA Economic Statistics Districts (Table 1) data remained similar to last week as follows: Test weights for SWH ranged from 58.8 to 63.4 lb/bu with weighted average at 61.9 lb/bu (81.4 kg/hl). SWH dockage ranged from 0.3 to 1.3%. SWH wheat moisture contents ranged from 8.5 to 10.6% with weighted average at 9.2%. Average SWH wheat protein content (12% mb) was 9.8% and the range is from 7.0 to 14.1%. SWH falling number average value (14% mb) was 324 seconds. WHCB, HRW, and HRS data stayed similar to last week.

We continue to report the six PNW Production Zones (Table 2): Northwest (NW), Southwest (SW), North Central (NC), Central (C), Northeast (NE), and Southeast (SE). The Zones are based on country elevator locations and climatic conditions. This week's samples came from Zones SE (42%), NE (21%), NC (20%), C (12%), and SW (5%).

Year-to-date the SWH weighted average protein (12% mb) was the highest for Zone SE at 10.0% followed by Zones C and NC at 9.9%; the lowest was in Zone SW at 8.8%. The WHCB average protein (12% mb) was the highest at 10.8% for Zone C, and the lowest at 8.8% for Zone NE. The most WHCB producing Zone NC was 9.8% (12% mb).



BY USDA ECONOMIC STATISTICS DISTRICTS

Table 1

2020 CROP WEEK 6: September 10, 2020																					
Grading Data											Quality Data										
Class	District	Number of Samples	Test Weight (lbbu)	Test Weight (kg/hl)	Decage (%)	Heat Damage (%)	Total Damage (%)	Foreign Material (%)	Shrunk & Broken (%)	Total Defects (%)	Moisture (%)	Protein (% 12% mb)			Falling Number (s. 14%mb)	Thousand Kernel Weight (g. 14% mb)	Kernel Hardness (-20 to 120)	Kernel Size (mm)	Ash (% 14% mb)	Wet Gluten (% 14% mb)	
												Average	Low	High							
SWH	1/2	21	58.8	77.4	0.5	0.0	0.0	0.0	0.4	0.5	10.6	8.8	7.3	10.6	318	38.3	28.0	2.88	1.43	19.6	
SWH	3	2	59.0	77.6	1.3	0.0	0.0	0.0	0.5	0.5	10.2	11.3	10.8	11.8	330	41.0	29.9	2.89	1.58	22.6	
SWH	4	50	61.7	81.1	0.7	0.0	0.0	0.0	0.6	0.6	9.0	10.1	7.7	14.1	329	34.8	34.8	2.76	1.33	25.5	
SWH	5	27	62.1	81.7	0.5	0.0	0.1	0.0	0.5	0.6	8.5	9.5	8.1	10.8	325	36.5	31.7	2.83	1.41	23.3	
SWH	6/7	17	62.9	82.7	0.4	0.0	0.0	0.0	0.4	0.4	9.6	10.1	8.8	12.3	319	35.6	34.6	2.72	1.20	25.4	
SWH	8	127	62.1	81.6	0.5	0.0	0.0	0.0	0.5	0.5	8.9	9.9	7.0	12.7	325	35.0	32.6	2.73	1.24	24.3	
SWH	9	15	61.5	80.8	0.5	0.0	0.0	0.0	0.6	0.6	9.9	9.2	7.3	10.7	340	36.0	35.4	2.67	1.23	20.5	
SWH	10	40	62.6	82.3	0.5	0.0	0.1	0.1	0.3	0.4	9.0	9.7	8.0	12.1	328	38.0	30.4	2.85	1.38	22.5	
SWH	11	29	63.4	83.3	0.3	0.0	0.0	0.0	0.4	0.4	9.6	9.0	7.7	9.8	321	38.2	31.3	2.82	1.38	20.4	
SWH	12	6	61.7	81.1	0.3	0.0	0.3	0.0	0.3	0.6	9.7	9.9	8.5	10.8	290	42.7	28.2	2.93	1.56	23.2	
SWH	13	11	61.5	80.9	0.4	0.0	0.2	0.0	0.4	0.6	9.5	9.8	8.9	11.2	305	38.8	28.0	2.81	1.54	22.5	
SWH	14	39	61.4	80.8	0.5	0.0	0.0	0.0	0.4	0.5	9.4	10.1	8.1	12.4	318	36.8	29.3	2.75	1.55	22.1	
	Crop Year Average																				
SWH	2020	384	61.9	81.4	0.5	0.0	0.0	0.0	0.4	0.5	9.2	9.8			324	36.3	31.9	2.77	1.35	23.3	
SWH	2019	438	61.6	81.0	0.5	0.0	0.0	0.0	0.5	0.5	9.9	10.0			307	36.4	23.4	2.77	1.35	23.9	
WHCB	4	1	52.0	68.6	4.0	0.0	0.0	0.1	5.2	5.3	8.2	12.4	12.4	12.4	358	17.5	40.7	2.22	1.64	32.7	
WHCB	5	3	59.0	77.7	0.5	0.0	0.3	0.0	0.6	1.0	8.9	10.2	7.7	12.8	345	27.3	30.7	2.54	1.39	20.2	
WHCB	6/7	4	61.6	81.0	0.4	0.0	0.0	0.0	0.8	0.8	8.7	11.0	9.9	12.0	290	33.5	33.6	2.62	1.28	15.1	
WHCB	8	79	61.8	81.3	0.4	0.0	0.0	0.0	0.7	0.8	8.4	9.8	6.6	12.5	320	32.7	31.0	2.62	1.25	18.1	
WHCB	10	2	61.5	80.8	1.2	0.0	0.0	0.1	1.3	1.4	8.4	11.7	11.4	11.9	415	30.6	39.4	2.63	1.63	15.8	
WHCB	11	6	61.5	80.9	0.6	0.0	0.0	0.0	1.0	1.0	9.3	8.8	8.1	9.2	325	32.0	31.8	2.60	1.33	16.2	
	Crop Year Average																				
WHCB	2020	95	61.6	81.0	0.5	0.0	0.0	0.0	0.8	0.9	8.5	9.8			322	32.3	31.4	2.61	1.27	18.0	
WHCB	2019	113	60.6	79.7	0.8	0.0	0.0	0.1	1.2	1.2	9.3	9.8			314	31.0	21.2	2.54	1.29	21.5	
HRW	3	2	58.55	77.066	1.2	0.00	0	0.15	0.15	0.3	8.7	9.45	9.0	9.9	312	37.1	56.0	2.99	1.36	19.7	
HRW	4	5	61.9	81.4	0.4	0.0	0.0	0.0	0.4	0.5	8.6	11.7	11.4	12.1	358	35.5	71.3	2.88	1.44	28.0	
HRW	5	1	63.2	83.1	0.5	0.0	0.0	0.0	0.2	0.2	10.0	12.0	12.0	12.0	294	37.6	66.7	2.88	1.21	24.2	
HRW	6/7	9	63.4	83.4	0.2	0.0	0.0	0.0	0.5	0.5	9.4	11.9	10.1	14.3	352	31.8	73.7	2.66	1.32	27.7	
HRW	8	19	62.9	82.6	0.3	0.0	0.0	0.0	0.4	0.4	9.3	11.6	9.0	13.2	356	39.0	66.9	2.86	1.37	27.7	
HRW	10	3	63.6	83.6	0.3	0.0	0.0	0.0	0.8	0.8	9.3	11.2	9.3	12.8	333	34.2	60.3	2.81	1.40	24.7	
HRW	11	12	63.8	83.8	0.2	0.0	0.0	0.0	0.3	0.3	9.2	10.7	10.1	11.2	333	37.6	66.4	2.92	1.34	23.0	
HRW	12	2	60.5	79.6	0.8	0.0	0.0	0.0	0.3	0.3	10.1	11.0	11.0	11.0	338	34.9	67.9	2.79	1.53	25.7	
HRW	13	3	63.6	83.5	0.4	0.0	0.1	0.0	0.8	0.9	8.0	11.0	10.3	11.7	387	37.8	65.4	2.85	1.50	28.2	
HRW	14	10	62.2	81.8	0.4	0.0	0.0	0.1	0.7	0.8	9.9	11.7	9.5	13.7	355	37.2	65.7	2.90	1.48	29.1	
	Crop Year Average																				
HRW	2020	66	62.8	82.6	0.4	0.0	0.0	0.0	0.5	0.5	9.3	11.4			349	36.8	67.2	2.88	1.39	26.6	
HRW	2019	105	62.6	82.2	0.4	0.0	0.0	0.1	0.5	0.6	9.6	11.4			346	36.2	63.4	2.87	1.34	25.9	
HRS	4	2	62.8	82.5	0.3	0.0	0.0	0.0	0.3	0.3	8.2	13.8	13.1	14.5	363	38.1	66.0	2.91	1.53	34.2	
HRS	5	6	61.9	81.4	0.9	0.0	0.4	0.0	0.4	0.8	9.1	13.6	13.0	14.2	359	33.9	72.9	2.81	1.65	30.6	
HRS	6/7	4	62.9	82.7	0.2	0.0	0.2	0.0	0.4	0.6	8.9	14.2	13.7	14.5	360	34.9	69.3	2.86	1.61	38.3	
HRS	8	14	61.7	81.2	0.5	0.0	0.0	0.0	0.6	0.7	9.0	14.4	11.9	17.0	386	31.2	62.2	2.75	1.62	37.0	
HRS	10	4	64.0	84.0	0.2	0.0	0.0	0.0	0.4	0.4	8.9	14.4	12.7	15.2	369	35.0	69.0	2.87	1.50	40.1	
HRS	11	4	63.5	83.4	0.3	0.0	0.0	0.0	0.2	0.2	8.6	13.8	13.3	14.8	359	30.6	78.2	2.74	1.50	33.2	
HRS	12	1	64.1	84.2	0.1	0.0	0.0	0.0	0.1	0.1	9.2	14.2	14.2	14.2	349	34.7	68.6	2.91	1.62	45.0	
HRS	13	6	62.9	82.7	0.4	0.0	0.0	0.0	0.3	0.3	8.7	14.5	13.6	14.9	360	32.7	76.7	2.76	1.56	35.7	
HRS	14	11	63.2	83.0	0.5	0.0	0.0	0.0	0.3	0.3	10.0	14.0	10.6	15.7	388	33.1	77.3	2.78	1.59	34.5	
	Crop Year Average																				
HRS	2020	52	62.7	82.4	0.4	0.0	0.1	0.0	0.4	0.5	9.1	14.1			373	32.9	70.9	2.79	1.59	35.7	
HRS	2019	58	63.0	82.8	0.4	0.0	0.1	0.0	0.6	0.7	9.7	14.4			369	32.8	69.0	2.79	1.57	36.6	



BY PRODUCTION ZONES

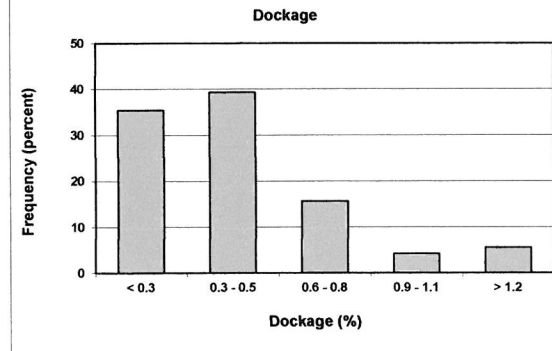
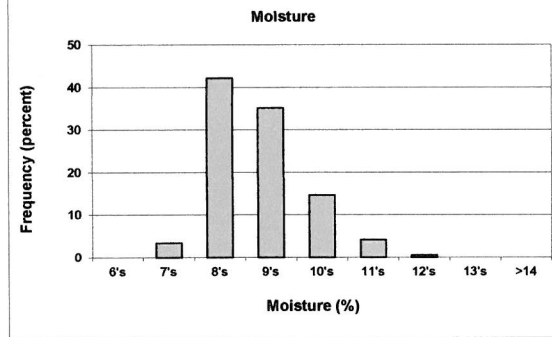
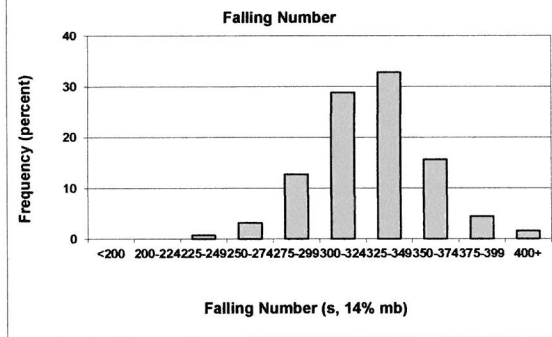
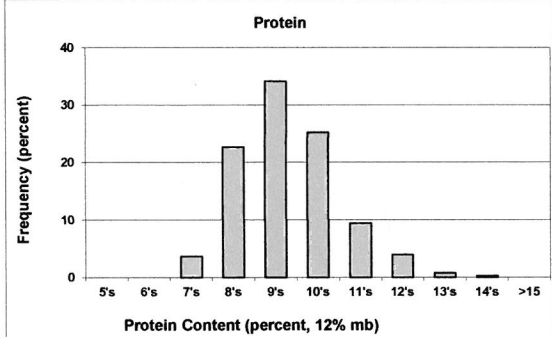
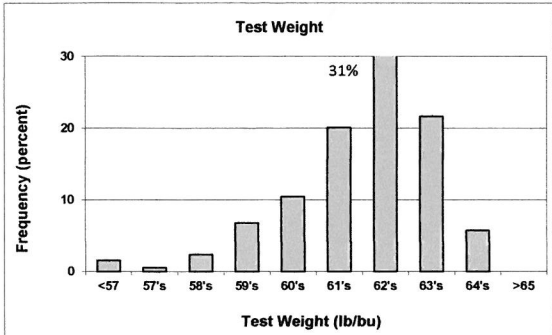
Table 2

2020 CROP WEEK 6: September 10, 2020																				
Grading Data											Quality Data									
Class	District	Number of Samples	Test Weight (lb/bu)	Test Weight (g/ht)	Dockage (%)	Heat Damage (%)	Total Damage (%)	Foreign Material (%)	Shrunk & Broken (%)	Total Defects (%)	Moisture (%)	Protein (% 12% mb)			Falling Number (s. 14%mb)	Thousand Kernel Weight (g. 14% mb)	Kernel Hardness (20 to 120)	Kernel Size (mm)	Ash (%. 14% mb)	Wet Gluten (%. 14% mb)
												Average	Low	High						
SWH	NC	163	62.2	81.7	0.4	0.0	0.0	0.0	0.4	0.5	8.9	9.9	7.0	12.7	329	35.2	32.3	2.75	1.26	24.2
SWH	NE	59	62.8	82.6	0.5	0.0	0.0	0.0	0.4	0.4	9.7	9.1	7.3	10.7	328	38.4	32.4	2.80	1.34	20.6
SWH	C	83	61.9	81.4	0.6	0.0	0.0	0.0	0.5	0.6	8.9	9.9	7.7	14.1	327	35.4	33.8	2.78	1.35	24.9
SWH	SW	21	58.8	77.4	0.5	0.0	0.0	0.0	0.4	0.5	10.6	8.8	7.3	10.6	318	38.3	28.0	2.88	1.43	19.6
SWH	SE	58	61.4	80.7	0.5	0.0	0.1	0.0	0.4	0.5	9.5	10.0	8.1	12.4	313	37.9	29.0	2.79	1.55	22.3
		Crop Year Average																		
SWH	2020	384	61.9	81.4	0.5	0.0	0.0	0.0	0.4	0.5	9.2	9.8			324	36.3	31.9	2.77	1.35	23.3
SWH	2019	438	61.6	81.0	0.5	0.0	0.0	0.0	0.5	0.5	9.9	10.0			307	36.4	23.4	2.77	1.35	23.9
WHCB	NC	83	61.8	81.3	0.5	0.0	0.0	0.0	0.8	0.8	8.4	9.8	6.6	12.5	322	32.7	31.3	2.62	1.26	17.9
WHCB	NE	6	61.5	80.9	0.6	0.0	0.0	0.0	1.0	1.0	9.3	8.8	8.1	9.2	325	32.0	31.8	2.60	1.33	16.2
WHCB	C	6	58.7	77.2	1.0	0.0	0.2	0.0	1.4	1.6	8.7	10.8	7.7	12.8	313	27.6	33.1	2.51	1.38	21.2
		Crop Year Average																		
WHCB	2020	95	61.6	81.0	0.5	0.0	0.0	0.0	0.8	0.9	8.5	9.8			322	32.3	31.4	2.61	1.27	18.0
WHCB	2019	113	60.6	79.7	0.8	0.0	0.0	0.1	1.2	1.2	9.3	9.8			314	31.0	21.2	2.54	1.29	21.5
HRW	NC	28	63.1	82.9	0.3	0.0	0.0	0.0	0.4	0.5	9.3	11.7	9.0	14.3	349	37.4	67.1	2.89	1.36	27.3
HRW	NE	12	63.8	83.8	0.2	0.0	0.0	0.0	0.3	0.3	9.2	10.7	10.1	11.2	333	37.6	66.4	2.92	1.34	23.0
HRW	C	9	62.5	82.2	0.4	0.0	0.0	0.0	0.4	0.4	9.1	11.7	11.1	12.8	357	33.4	73.5	2.76	1.38	27.6
HRW	SE	17	61.8	81.3	0.5	0.0	0.0	0.0	0.6	0.7	9.4	11.2	9.0	13.7	352	37.0	64.8	2.89	1.48	27.4
		Crop Year Average																		
HRW	2020	66	62.8	82.6	0.4	0.0	0.0	0.0	0.5	0.5	9.3	11.4			349	36.8	67.2	2.88	1.39	26.6
HRW	2019	105	62.6	82.2	0.4	0.0	0.0	0.1	0.5	0.6	9.6	11.4			346	36.2	63.4	2.87	1.34	25.9
HRS	NC	21	62.2	81.8	0.4	0.0	0.1	0.0	0.6	0.6	8.9	14.4	11.9	17.0	381	32.1	64.8	2.78	1.60	37.8
HRS	NE	4	63.5	83.4	0.3	0.0	0.0	0.0	0.2	0.2	8.6	13.8	13.3	14.8	359	30.6	78.2	2.74	1.50	33.2
HRS	C	9	62.5	82.1	0.7	0.0	0.3	0.0	0.3	0.6	8.9	13.6	13.0	14.5	354	35.8	70.2	2.87	1.60	32.2
HRS	SE	18	63.1	83.0	0.4	0.0	0.0	0.0	0.3	0.3	9.5	14.2	10.6	15.7	376	33.0	76.6	2.78	1.58	35.5
		Crop Year Average																		
HRS	2020	52	62.7	82.4	0.4	0.0	0.1	0.0	0.4	0.5	9.1	14.1			373	32.9	70.9	2.79	1.59	35.7
HRS	2019	58	63.0	82.8	0.4	0.0	0.1	0.0	0.6	0.7	9.7	14.4			369	32.8	69.0	2.79	1.57	36.6

Distributions

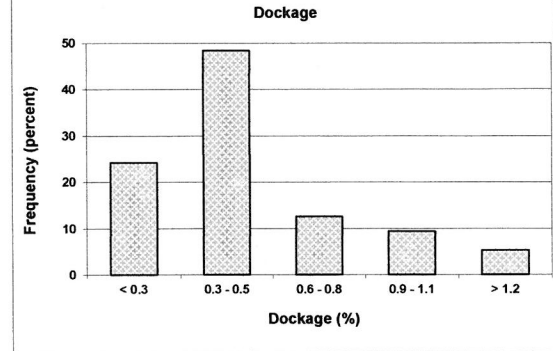
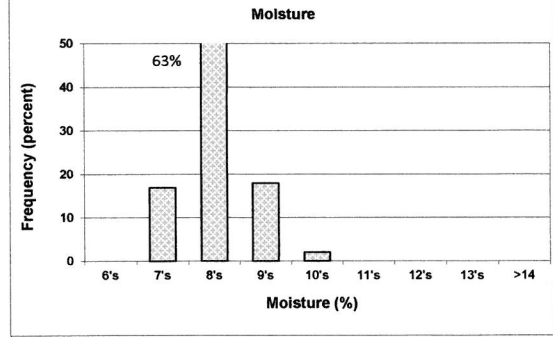
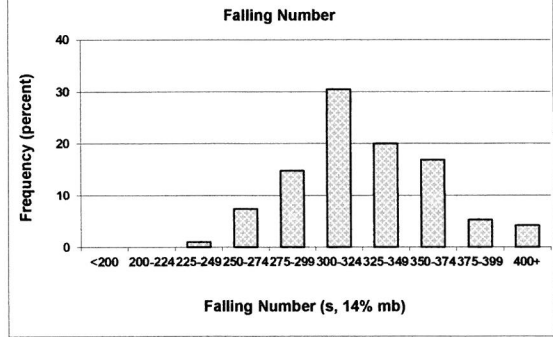
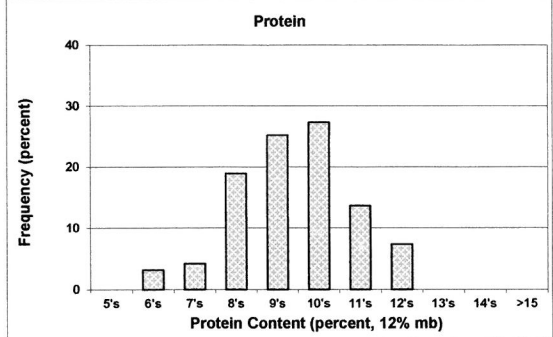
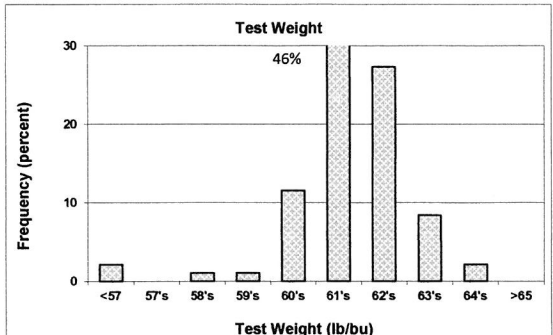
SOFT WHITE WHEAT

384 SAMPLES



WHITE CLUB WHEAT

95 SAMPLE



Prepared by: Wheat Marketing Center, Portland, Oregon