



2020 PACIFIC NORTHWEST CROP QUALITY REPORT

WEEK 7 FINAL: September 17, 2020

This is the final weekly report for the 2020 Pacific Northwest wheat harvest survey. We have received and tested 642 samples. Sincere gratitude is extended to the Federal Grain Inspection Service Portland Field Office for grading and protein analysis, the PNW wheat growers, and PNW state and private grain inspection organizations for their generous cooperation in the sample collection. Special thanks go to Idaho Wheat Commission, Oregon Wheat Commission, and Washington Grain Commission for funding this project.

Of the 642 samples received this year, 389 were soft white (SWH), 95 were white club (WHCB), 71 were hard red winter (HRW), 63 were hard red spring (HRS), 22 were hard white (HDWH), and two were western white wheat (WWH).

Soft white wheat crop weighted averages had the following differences when compared to 2019. Test weight was slightly higher at 61.9 lb/bu (81.4 kg/hl). Wheat moisture content decreased to 9.2% from 9.9% last year. Wheat protein (12% mb) decreased to 9.8% from 10.0% last year. Falling number value (14% mb) was higher at 323 seconds. Thousand kernel weight (14% mb) was similar to last year and kernel size remained the same as last year. Kernel hardness was higher and wheat ash content was the same as last year.

White club wheat crop weighted averages had the following differences from 2019. Test weight increased to 61.6 lb/bu (81.0 kg/hl) from 60.6 lb/bu (79.7 kg/hl) last year. Wheat moisture decreased to 8.5% from 9.3% last year. Wheat protein (12% mb) remained the same at 9.8%. Falling number value (14% mb) was higher at 322 seconds. Whole meal wet gluten (14% mb) decreased to 18.0% from 21.5% last year.

Hard red winter wheat crop weighted averages had the following highlights when compared to 2019. Test weight was similar at 62.9 lb/bu. Wheat moisture decreased to 9.3% from 9.6% last year. Wheat protein (12% mb) remained the same at 11.4% and falling number value (14% mb) remained similar at 351 seconds. Whole meal wet gluten (14% mb) increased to 26.8% from 25.9% last year; thousand kernel weight (14% mb) and kernel size were similar to last year.

Hard red spring wheat crop weighted averages follow similar trends as HRW with similar test weight, decreased moisture, and similar wheat protein when compared to last year.

Thank you all for your support. We have started to make SWH and WHCB composites to perform Buhler milling, various flour, and finished product tests for the US Wheat Associates 2020 Crop Quality Report as well as the 2020 U.S. Pacific Northwest Soft White Wheat Quality Report.



BY USDA ECONOMIC STATISTICS DISTRICTS

Table 1

2020 CROP WEEK 7 Final: September 17, 2020																					
Grading Data											Quality Data										
Class	District	Number of Samples	Test Weight (lb/bu)	Test Weight (kg/ht)	Dockage (%)	Heat Damage (%)	Total Damage (%)	Foreign Material (%)	Shrunk & Broken (%)	Total Defects (%)	Moisture (%)	Protein (% 12% mb)			Falling Number (s, 14%mb)	Thousand Kernel Weight (g, 14% mb)	Kernel Hardness (-20 to 120)	Kernel Size (mm)	Ash (% 14% mb)	Wet Gluten (% 14% mb)	
												Average	Low	High							
SWH	1/2	21	58.8	77.4	0.5	0.0	0.0	0.0	0.4	0.5	10.6	8.8	7.3	10.6	318	38.3	28.0	2.88	1.43	19.6	
SWH	3	3	59.5	78.2	1.0	0.0	0.0	0.0	0.5	0.5	10.0	11.4	10.8	11.8	324	38.4	28.2	2.78	1.59	25.4	
SWH	4	50	61.7	81.1	0.7	0.0	0.0	0.0	0.6	0.6	9.0	10.1	7.7	14.1	329	34.8	34.8	2.76	1.33	25.5	
SWH	5	27	62.1	81.7	0.5	0.0	0.1	0.0	0.5	0.6	8.5	9.5	8.1	10.8	325	36.5	31.7	2.83	1.41	23.3	
SWH	6/7	17	62.9	82.7	0.4	0.0	0.0	0.0	0.4	0.4	9.6	10.1	8.8	12.3	319	35.6	34.6	2.72	1.20	25.4	
SWH	8	127	62.1	81.6	0.5	0.0	0.0	0.0	0.5	0.5	8.9	9.9	7.0	12.7	325	35.0	32.6	2.73	1.24	24.3	
SWH	9	15	61.5	80.8	0.5	0.0	0.0	0.0	0.6	0.6	9.9	9.2	7.3	10.7	340	36.0	35.4	2.67	1.23	20.5	
SWH	10	40	62.6	82.3	0.5	0.0	0.1	0.1	0.3	0.4	9.0	9.7	8.0	12.1	328	38.0	30.4	2.85	1.38	22.5	
SWH	11	29	63.4	83.3	0.3	0.0	0.0	0.0	0.4	0.4	9.6	9.0	7.7	9.8	321	38.2	31.3	2.82	1.38	20.4	
SWH	12	6	61.7	81.1	0.3	0.0	0.3	0.0	0.3	0.6	9.7	9.9	8.5	10.8	290	42.7	28.2	2.93	1.56	23.2	
SWH	13	11	61.5	80.9	0.4	0.0	0.2	0.0	0.4	0.6	9.5	9.8	8.9	11.2	305	38.8	28.0	2.81	1.54	22.5	
SWH	14	43	61.5	80.9	0.6	0.0	0.0	0.0	0.4	0.5	9.4	10.1	8.1	12.4	318	36.5	32.7	2.75	1.54	22.4	
	Crop Year Average																				
SWH	2020	389	61.9	81.4	0.5	0.0	0.0	0.0	0.4	0.5	9.2	9.8			323	36.3	32.2	2.77	1.35	23.3	
SWH	2019	438	61.6	81.0	0.5	0.0	0.0	0.0	0.5	0.5	9.9	10.0			307	36.4	23.4	2.77	1.35	23.9	
WHCB	4	1	52.0	68.6	4.0	0.0	0.0	0.1	5.2	5.3	8.2	12.4	12.4	12.4	358	17.5	40.7	2.22	1.64	32.7	
WHCB	5	3	59.0	77.7	0.5	0.0	0.3	0.0	0.6	1.0	8.9	10.2	7.7	12.8	345	27.3	30.7	2.54	1.39	20.2	
WHCB	6/7	4	61.6	81.0	0.4	0.0	0.0	0.0	0.8	0.8	8.7	11.0	9.9	12.0	290	33.5	33.6	2.62	1.28	15.1	
WHCB	8	79	61.8	81.3	0.4	0.0	0.0	0.0	0.7	0.8	8.4	9.8	6.6	12.5	320	32.7	31.0	2.62	1.25	18.1	
WHCB	10	2	61.5	80.8	1.2	0.0	0.0	0.1	1.3	1.4	8.4	11.7	11.4	11.9	415	30.6	39.4	2.63	1.63	15.8	
WHCB	11	6	61.5	80.9	0.6	0.0	0.0	0.0	1.0	1.0	9.3	8.8	8.1	9.2	325	32.0	31.8	2.60	1.33	16.2	
	Crop Year Average																				
WHCB	2020	95	61.6	81.0	0.5	0.0	0.0	0.0	0.8	0.9	8.5	9.8			322	32.3	31.4	2.61	1.27	18.0	
WHCB	2019	113	60.6	79.7	0.8	0.0	0.0	0.1	1.2	1.2	9.3	9.8			314	31.0	21.2	2.54	1.29	21.5	
HRW	3	2	58.6	77.1	1.2	0.00	0	0.15	0.15	0.3	8.7	9.45	9.0	9.9	312	37.1	56.0	2.99	1.36	19.7	
HRW	4	5	61.9	81.4	0.4	0.0	0.0	0.0	0.4	0.5	8.6	11.7	11.4	12.1	358	35.5	71.3	2.88	1.44	28.0	
HRW	5	1	63.2	83.1	0.5	0.0	0.0	0.0	0.2	0.2	10.0	12.0	12.0	12.0	294	37.6	66.7	2.88	1.21	24.2	
HRW	6/7	9	63.4	83.4	0.2	0.0	0.0	0.0	0.5	0.5	9.4	11.9	10.1	14.3	352	31.8	73.7	2.66	1.32	27.7	
HRW	8	19	62.9	82.6	0.3	0.0	0.0	0.0	0.4	0.4	9.3	11.6	9.0	13.2	356	39.0	66.9	2.96	1.37	27.7	
HRW	10	3	63.6	83.6	0.3	0.0	0.0	0.0	0.8	0.8	9.3	11.2	9.3	12.8	333	34.2	60.3	2.81	1.40	24.7	
HRW	11	12	63.8	83.8	0.2	0.0	0.0	0.0	0.3	0.3	9.2	10.7	10.1	11.2	333	37.6	66.4	2.92	1.34	23.0	
HRW	12	2	60.5	79.6	0.8	0.0	0.0	0.0	0.3	0.3	10.1	11.0	11.0	11.0	338	34.9	67.9	2.79	1.53	25.7	
HRW	13	4	63.3	83.2	0.4	0.0	0.1	0.0	0.7	0.8	8.5	11.4	10.3	12.6	397	37.3	67.5	2.84	1.50	28.1	
HRW	14	12	62.7	82.4	0.4	0.0	0.0	0.1	0.6	0.7	9.6	11.8	9.5	13.7	362	37.0	67.6	2.84	1.50	29.4	
	Crop Year Average																				
HRW	2020	69	62.9	82.6	0.3	0.0	0.0	0.0	0.4	0.5	9.3	11.4			351	36.7	67.6	2.87	1.40	26.8	
HRW	2019	105	62.6	82.2	0.4	0.0	0.0	0.1	0.5	0.6	9.6	11.4			346	36.2	63.4	2.87	1.34	25.9	
HRS	4	2	62.8	82.5	0.3	0.0	0.0	0.0	0.3	0.3	8.2	13.8	13.1	14.5	363	38.1	66.0	2.91	1.53	34.2	
HRS	5	6	61.9	81.4	0.9	0.0	0.4	0.0	0.4	0.8	9.1	13.6	13.0	14.2	359	33.9	72.9	2.81	1.65	30.6	
HRS	6/7	4	62.9	82.7	0.2	0.0	0.2	0.0	0.4	0.6	8.9	14.2	13.7	14.5	360	34.9	69.3	2.86	1.61	38.3	
HRS	8	14	61.7	81.2	0.5	0.0	0.0	0.0	0.6	0.7	9.0	14.4	11.9	17.0	386	31.2	62.2	2.75	1.62	37.0	
HRS	10	4	64.0	84.0	0.2	0.0	0.0	0.0	0.4	0.4	8.9	14.4	12.7	15.2	369	35.0	69.0	2.87	1.50	40.1	
HRS	11	4	63.5	83.4	0.3	0.0	0.0	0.0	0.2	0.2	8.6	13.8	13.3	14.8	359	30.6	78.2	2.74	1.50	33.2	
HRS	12	1	64.1	84.2	0.1	0.0	0.0	0.0	0.1	0.1	9.2	14.2	14.2	14.2	349	34.7	68.6	2.91	1.62	45.0	
HRS	13	6	62.9	82.7	0.4	0.0	0.0	0.0	0.3	0.3	8.7	14.5	13.6	14.9	360	32.7	76.7	2.76	1.56	35.7	
HRS	14	24	63.1	83.0	0.5	0.0	0.0	0.1	0.5	0.6	9.7	14.1	10.6	15.8	399	32.0	77.3	2.76	1.61	35.0	
	Crop Year Average																				
HRS	2020	65	62.8	82.5	0.5	0.0	0.1	0.0	0.4	0.5	9.2	14.1			380	32.6	72.1	2.78	1.60	35.6	
HRS	2019	58	63.0	82.8	0.4	0.0	0.1	0.0	0.6	0.7	9.7	14.4			369	32.8	69.0	2.79	1.57	36.6	



BY PRODUCTION ZONES

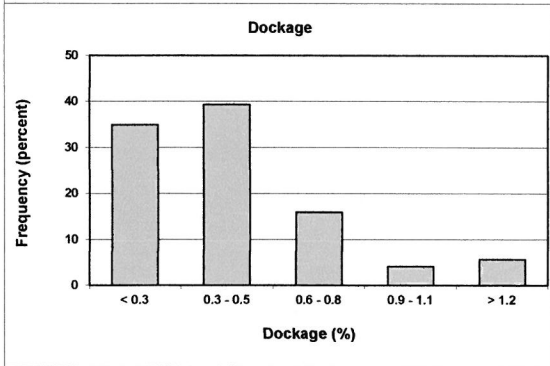
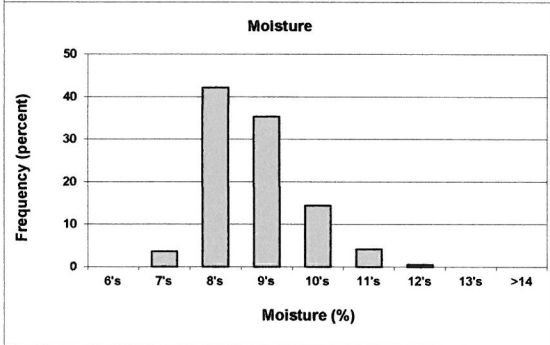
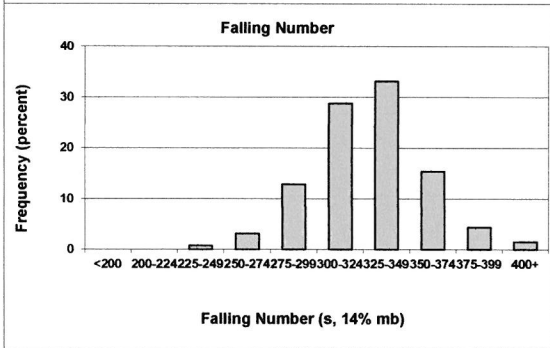
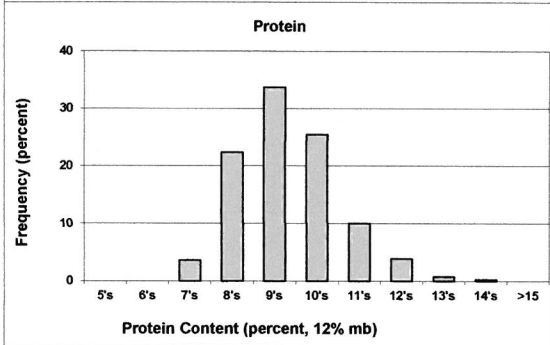
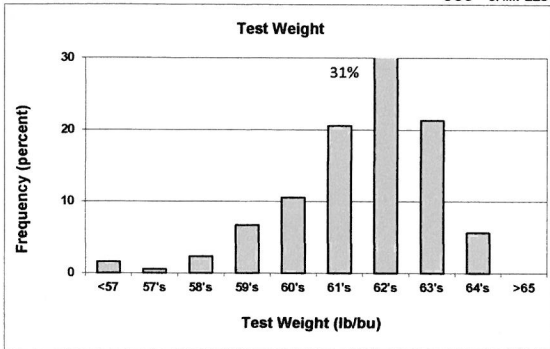
Table 2

2020 CROP WEEK 7 Final: September 17, 2020																				
		Grading Data									Quality Data									
Class	District	Number of Samples	Test Weight (lb/bu)	Test Weight (kg/hi)	Dockage (%)	Heat Damage (%)	Total Damage (%)	Foreign Material (%)	Shrunk & Broken (%)	Total Defects (%)	Moisture (%)	Protein (% 12% mb)			Falling Number (s. 14%mb)	Thousand Kernel Weight (g. 14% mb)	Kernel Hardness (-20 to 120)	Kernel Size (mm)	Ash (%. 14% mb)	Wet Gluten (%. 14% mb)
												Average	Low	High						
SWH	NC	163	62.2	81.7	0.4	0.0	0.0	0.0	0.4	0.5	8.9	9.9	7.0	12.7	329	35.2	32.3	2.75	1.26	24.2
SWH	NE	59	62.8	82.6	0.5	0.0	0.0	0.0	0.4	0.4	9.7	9.1	7.3	10.7	328	38.4	32.4	2.80	1.34	20.6
SWH	C	83	61.9	81.4	0.6	0.0	0.0	0.0	0.5	0.6	8.9	9.9	7.7	14.1	327	35.4	33.8	2.78	1.35	24.9
SWH	SW	22	58.9	77.5	0.5	0.0	0.0	0.0	0.4	0.5	10.6	8.9	7.3	11.5	318	38.0	27.9	2.87	1.44	20.1
SWH	SE	62	61.4	80.8	0.5	0.0	0.1	0.0	0.4	0.5	9.4	10.1	8.1	12.4	313	37.7	31.4	2.78	1.55	22.5
	Crop Year Average																			
SWH	2020	389	61.9	81.4	0.5	0.0	0.0	0.0	0.4	0.5	9.2	9.8			323	36.3	32.2	2.77	1.35	23.3
SWH	2019	438	61.6	81.0	0.5	0.0	0.0	0.0	0.5	0.5	9.9	10.0			307	36.4	23.4	2.77	1.35	23.9
WHCB	NC	83	61.8	81.3	0.5	0.0	0.0	0.0	0.8	0.8	8.4	9.8	6.6	12.5	322	32.7	31.3	2.62	1.26	17.9
WHCB	NE	6	61.5	80.9	0.6	0.0	0.0	0.0	1.0	1.0	9.3	8.8	8.1	9.2	325	32.0	31.8	2.60	1.33	16.2
WHCB	C	6	58.7	77.2	1.0	0.0	0.2	0.0	1.4	1.6	8.7	10.8	7.7	12.8	313	27.6	33.1	2.51	1.38	21.2
	Crop Year Average																			
WHCB	2020	95	61.6	81.0	0.5	0.0	0.0	0.0	0.8	0.9	8.5	9.8			322	32.3	31.4	2.61	1.27	18.0
WHCB	2019	113	60.6	79.7	0.8	0.0	0.0	0.1	1.2	1.2	9.3	9.8			314	31.0	21.2	2.54	1.29	21.5
HRW	NC	28	63.1	82.9	0.3	0.0	0.0	0.0	0.4	0.5	9.3	11.7	9.0	14.3	349	37.4	67.1	2.89	1.36	27.3
HRW	NE	12	63.8	83.8	0.2	0.0	0.0	0.0	0.3	0.3	9.2	10.7	10.1	11.2	333	37.6	66.4	2.92	1.34	23.0
HRW	C	9	62.5	82.2	0.4	0.0	0.0	0.0	0.4	0.4	9.1	11.7	11.1	12.8	357	33.4	73.5	2.76	1.38	27.6
HRW	SE	20	62.2	81.7	0.5	0.0	0.0	0.0	0.6	0.6	9.4	11.4	9.0	13.7	359	36.9	66.4	2.85	1.49	27.8
	Crop Year Average																			
HRW	2020	69	62.9	82.6	0.3	0.0	0.0	0.0	0.4	0.5	9.3	11.4			351	36.7	67.6	2.87	1.40	26.8
HRW	2019	105	62.6	82.2	0.4	0.0	0.0	0.1	0.5	0.6	9.6	11.4			346	36.2	63.4	2.87	1.34	25.9
HRS	NC	21	62.2	81.8	0.4	0.0	0.1	0.0	0.6	0.6	8.9	14.4	11.9	17.0	381	32.1	64.8	2.78	1.60	37.8
HRS	NE	4	63.5	83.4	0.3	0.0	0.0	0.0	0.2	0.2	8.6	13.8	13.3	14.8	359	30.6	78.2	2.74	1.50	33.2
HRS	C	9	62.5	82.1	0.7	0.0	0.3	0.0	0.3	0.6	8.9	13.6	13.0	14.5	354	35.8	70.2	2.87	1.60	32.2
HRS	SE	31	63.1	83.0	0.5	0.0	0.0	0.1	0.4	0.5	9.5	14.2	10.6	15.8	389	32.2	76.9	2.77	1.60	35.4
	Crop Year Average																			
HRS	2020	65	62.8	82.5	0.5	0.0	0.1	0.0	0.4	0.5	9.2	14.1			380	32.6	72.1	2.78	1.60	35.6
HRS	2019	58	63.0	82.8	0.4	0.0	0.1	0.0	0.6	0.7	9.7	14.4			369	32.8	69.0	2.79	1.57	36.6

Distributions

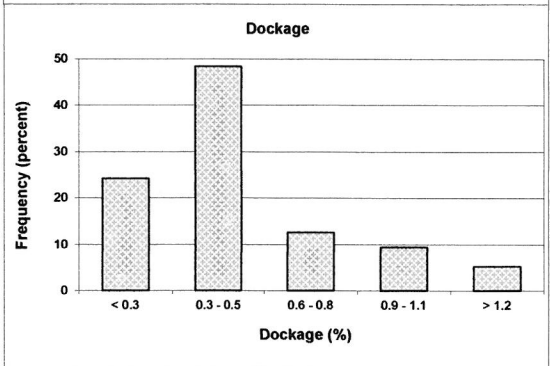
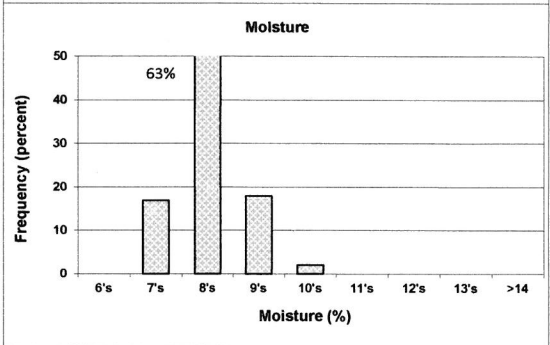
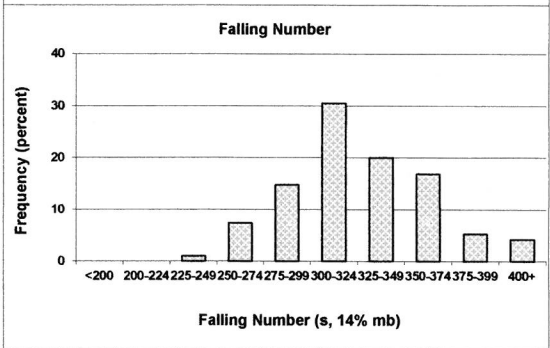
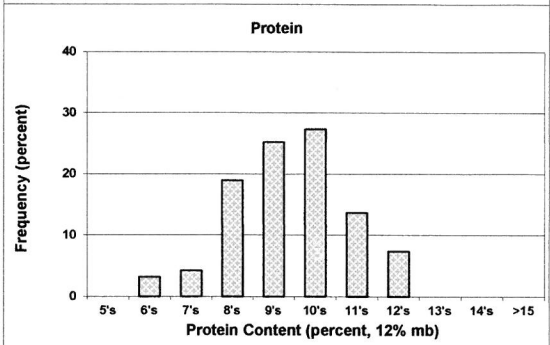
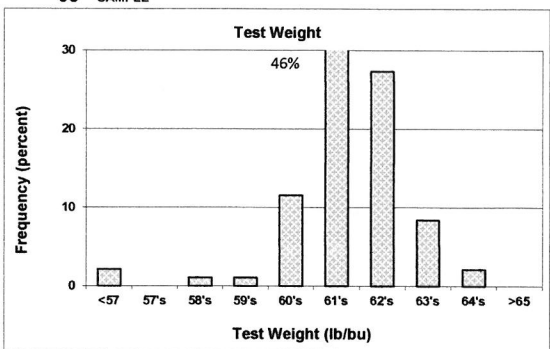
SOFT WHITE WHEAT

389 SAMPLES



WHITE CLUB WHEAT

95 SAMPLE



Prepared by: Wheat Marketing Center, Portland, Oregon