



## 2021 PACIFIC NORTHWEST CROP QUALITY REPORT

WEEK 2: July 29, 2021

By the end of the second week reporting period for the 2021 Pacific Northwest wheat harvest, we received a total of 150 samples.

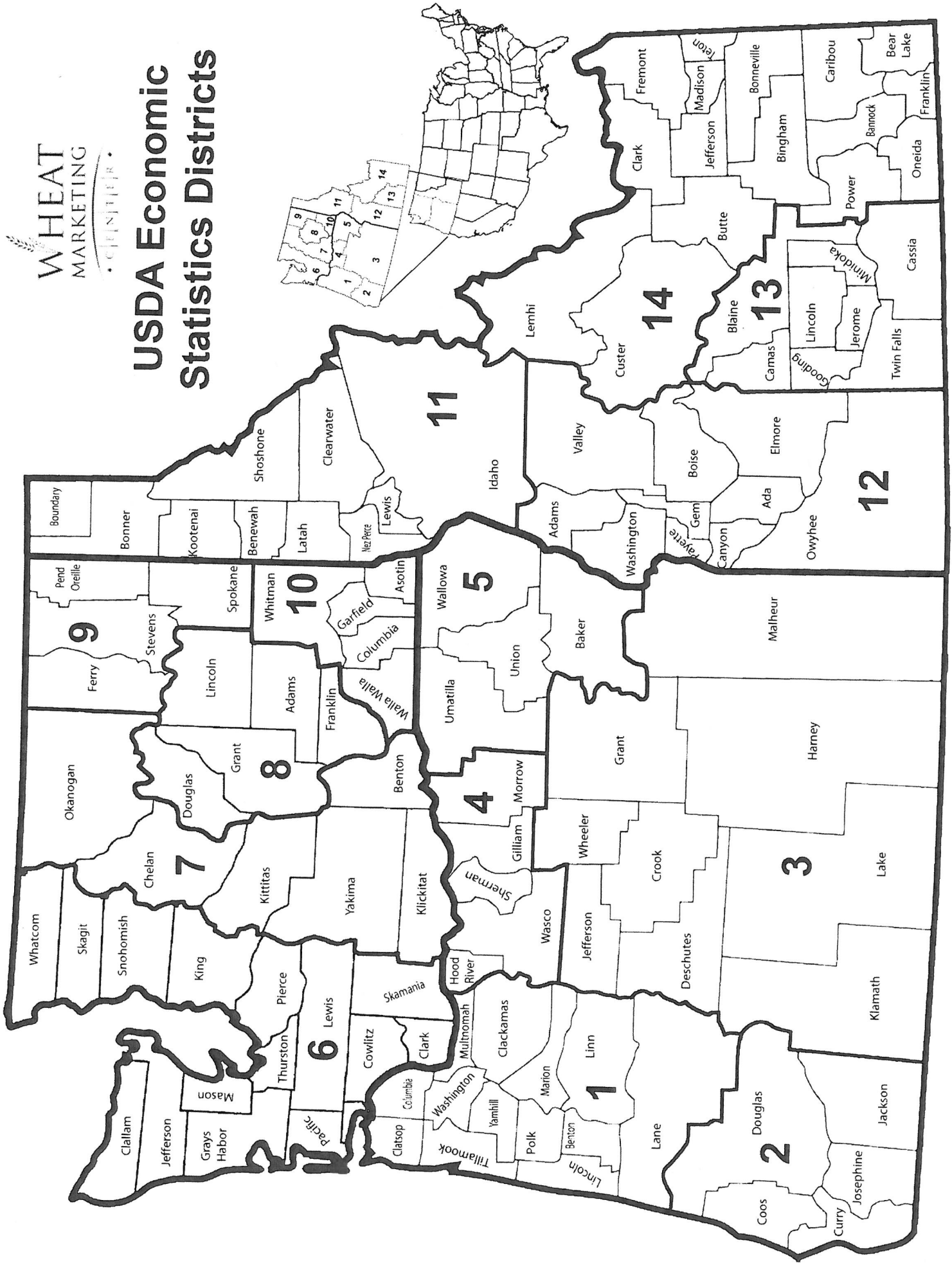
Of the 108 wheat samples we received in the second week, 68 were soft white (SWH), 23 were white club (WHCB), 14 were hard red winter (HRW), and 3 were hard red spring (HRS). Fifty-six samples (52%) came from District 8 (East Central Washington), 21 (19%) came from District 10 (Southeastern Washington), 12 (11%) came from District 11 (Northern Idaho), 10 (9%) came from Districts 6/7 (Western Washington), and less than 10 samples came from Districts 4 (North Central Oregon) and District 5 (Northeastern Oregon).

USDA Economic Statistics Districts (Table 1) showed the following: Test weights for SWH ranged from 59.4 to 61.1 lbs/bu (78.1 to 80.4 kg/hl). Dockage ranged from 0.2 to 0.5%. Wheat moisture content ranged from 7.7 to 8.4%. Average SWH wheat protein content (12% mb) came down slightly to 11.3% from 11.4% last week. SWH falling number average value (14% mb) increased slightly from last week at 350 seconds. Thousand kernel weight (14% mb) and kernel size indicated lighter and smaller kernels, respectively when compared to last year's averages. WHCB averages had lower test weight, lower moisture content, higher protein, higher falling number value, lighter thousand kernel weight, and smaller kernel size when compared to last year's averages after the second week. For HRW samples, averages indicated lower test weight, lower kernel moisture, higher protein content, higher falling number value, and lighter and smaller kernels when compared to last year's averages. No comment on HRS samples because the sample numbers are too few.

We will continue to report the six PNW Production Zones (Table 2): Northwest (NW), Southwest (SW), North Central (NC), Central (C), Northeast (NE), and Southeast (SE). The Zones are based on country elevator locations and climatic conditions. This week samples came from Zones NC (65%), NE (23%), and C (12%).

Although the average SWH protein (12% mb) was 11.3% at the end of second week, protein ranges from 7.7 to 14.1%. This wide range of protein happens every year regardless of low or high protein year.

# USDA Economic Statistics Districts





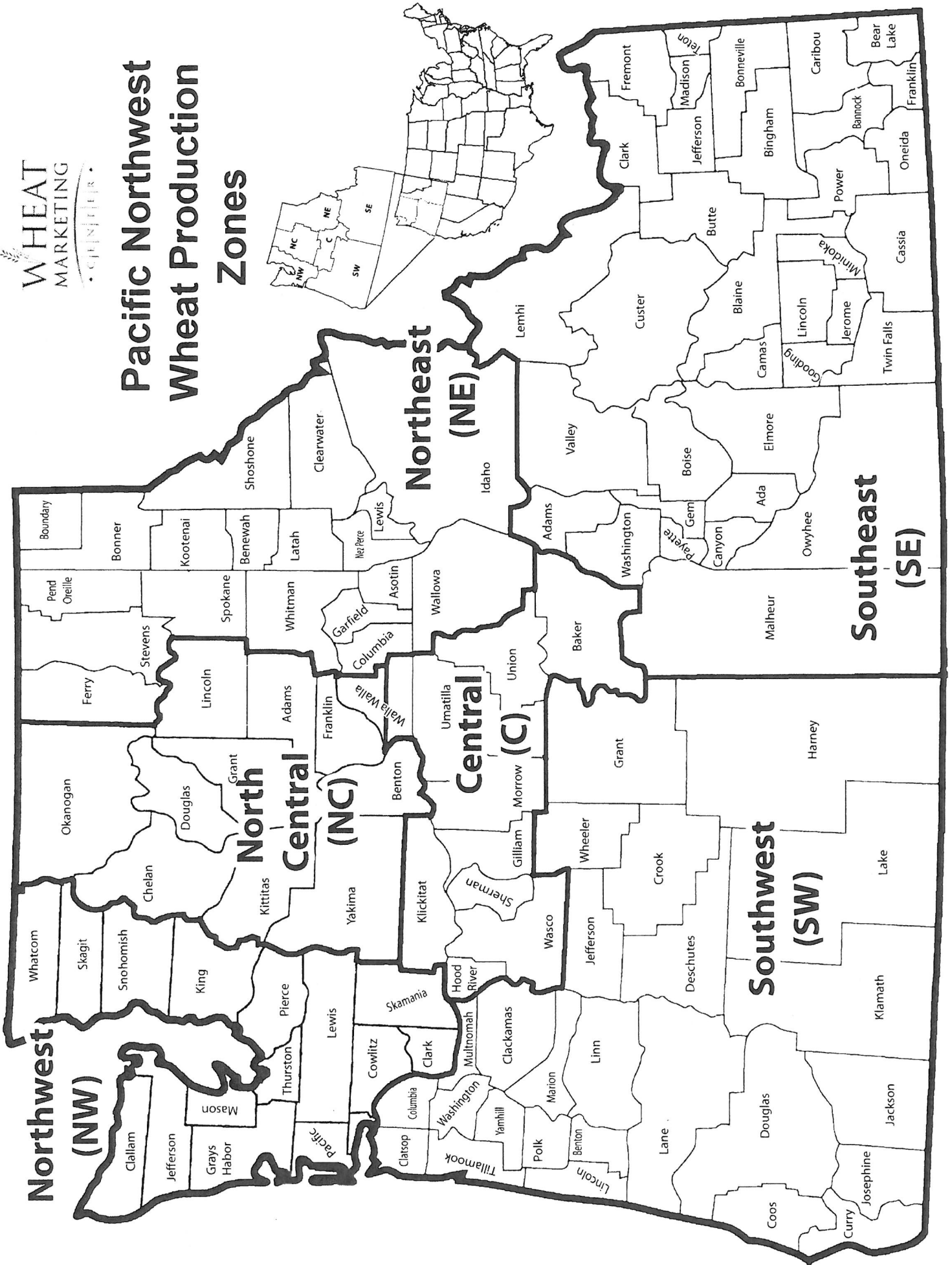
**BY USDA ECONOMIC STATISTICS DISTRICTS**

**Table 1**

2021 CROP WEEK 2: July 29, 2021																				
Grading Data											Quality Data									
Class	District	Number of Samples	Test Weight (lbibu)	Test Weight (kg/hl)	Dockage (%)	Heat Damage (%)	Total Damage (%)	Foreign Material (%)	Shrunk & Broken (%)	Total Defects (%)	Moisture (%)	Protein (%; 12% mb)			Falling Number (s; 14%mb)	Thousand Kernel Weight (g; 14% mb)	Kernel Hardness (>20 to 120)	Kernel Size (mm)	Ash (%; 14% mb)	Wet Gluten (%; 14% mb)
												Average	Low	High						
SWH	4	16	59.9	78.8	0.5	0.0	0.2	0.0	0.9	1.2	8.2	11.3	9.3	13.4	347	29.1	38.8	2.51	1.37	27.8
SWH	5	6	60.2	79.2	0.3	0.0	0.0	0.0	0.7	0.7	8.4	9.9	8.8	11.8	317	32.8	31.0	2.62	1.57	20.9
SWH	6/7	3	61.1	80.4	0.3	0.0	0.0	0.1	1.0	1.1	8.4	11.9	10.8	12.5	334	28.9	36.2	2.57	1.25	31.3
SWH	8	43	60.0	79.0	0.3	0.0	0.0	0.0	0.8	0.8	7.7	11.3	7.7	13.8	354	29.3	40.8	2.53	1.24	26.9
SWH	10	19	59.9	78.9	0.2	0.0	0.0	0.0	1.0	1.0	7.8	11.4	9.3	13.9	346	28.0	39.8	2.49	1.30	27.0
SWH	11	15	59.4	78.1	0.4	0.0	0.0	0.0	1.0	1.0	8.1	11.7	9.4	14.1	362	25.9	37.9	2.44	1.37	28.6
	<b>Crop Year Average</b>																			
SWH	<b>2021</b>	102	59.9	78.8	0.3	0.0	0.0	0.0	0.9	0.9	7.9	11.3			350	28.7	39.2	2.51	1.31	27.1
SWH	<b>2020</b>	389	61.9	81.4	0.5	0.0	0.0	0.0	0.4	0.5	9.2	9.8			323	36.3	32.2	2.77	1.35	29.3
WHCB	5	1	58.7	77.3	1.2	0.0	0.0	0.2	1.2	1.4	7.4	10.6	10.6	10.6	351	24.1	35.9	2.40	1.47	*
WHCB	6/7	2	59.0	77.6	0.0	0.0	0.0	0.0	0.8	0.8	8.0	9.5	9.0	9.9	303	32.2	36.3	2.58	1.31	*
WHCB	8	21	60.6	79.8	0.3	0.0	0.0	0.0	1.1	1.1	7.7	10.9	8.9	13.5	354	29.7	40.6	2.47	1.25	*
WHCB	10	1	61.0	80.2	0.2	0.0	0.0	0.0	0.8	0.8	7.8	10.0	10.0	10.0	370	27.7	57.3	2.47	1.25	*
	<b>Crop Year Average</b>																			
WHCB	<b>2021</b>	25	60.4	79.5	0.3	0.0	0.0	0.0	1.1	1.1	7.7	10.7			350	29.6	40.9	2.48	1.27	*
WHCB	<b>2020</b>	95	61.6	81.0	0.5	0.0	0.0	0.0	0.8	0.9	8.5	9.8			322	32.3	31.4	2.61	1.27	18.0
HRW	4	2	61.1	80.3	0.1	0.0	0.8	0.0	1.7	2.5	7.4	12.7	11.7	13.6	431	26.5	79.7	2.50	1.36	29.0
HRW	6/7	6	60.1	79.0	0.1	0.0	0.0	0.0	1.1	1.1	8.5	13.3	11.0	16.3	449	31.3	71.6	2.66	1.53	31.5
HRW	8	2	61.2	80.5	0.0	0.0	0.0	0.1	1.1	1.2	7.8	12.0	11.7	12.2	363	37.6	68.9	2.98	1.58	26.7
HRW	10	4	59.2	77.9	0.2	0.0	0.0	0.0	1.1	1.1	7.5	12.9	11.5	13.9	342	26.7	77.5	2.53	1.32	28.2
HRW	11	4	57.8	76.1	0.5	0.0	0.0	0.0	1.3	1.3	7.7	13.2	11.8	14.3	353	25.3	78.2	2.54	1.34	29.1
	<b>Crop Year Average</b>																			
HRW	<b>2021</b>	18	59.6	78.4	0.2	0.0	0.1	0.0	1.2	1.3	7.9	13.0			392	29.1	75.0	2.62	1.42	29.4
HRW	<b>2020</b>	69	62.9	82.6	0.3	0.0	0.0	0.0	0.4	0.5	9.3	11.4			351	36.7	67.6	2.87	1.40	26.8
HRS	5	2	61.3	80.6	0.2	0.0	0.0	0.3	0.8	1.1	7.7	15.5	14.8	16.1	402	27.6	82.6	2.65	1.58	40.7
HRS	6/7	2	61.1	80.4	0.0	0.0	0.0	0.1	0.7	0.7	7.8	14.4	13.4	15.4	405	31.6	70.1	2.77	1.66	36.8
HRS	8	1	62.5	82.2	0.0	0.0	0.0	0.0	0.7	0.7	8.5	13.7	13.7	13.7	371	30.1	72.4	2.68	1.65	33.2
	<b>Crop Year Average</b>																			
HRS	<b>2021</b>	5	61.4	80.8	0.1	0.0	0.0	0.1	0.7	0.9	7.9	14.7			397	29.7	75.6	2.70	1.63	37.6
HRS	<b>2020</b>	65	62.8	82.5	0.5	0.0	0.1	0.0	0.4	0.5	9.2	14.1			380	32.6	72.1	2.78	1.60	35.6

\* Glutomatic - laboratory equipment to measure wet gluten content was not able to work with this week's WHCB samples.

# Pacific Northwest Wheat Production Zones





**BY PRODUCTION ZONES**

**Table 2**

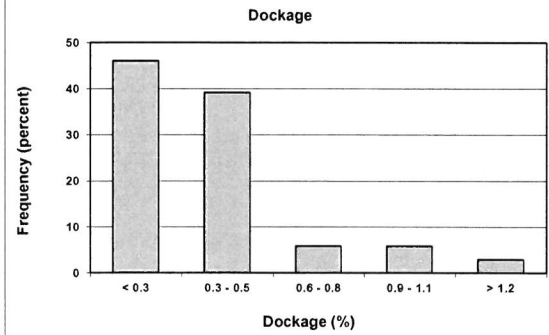
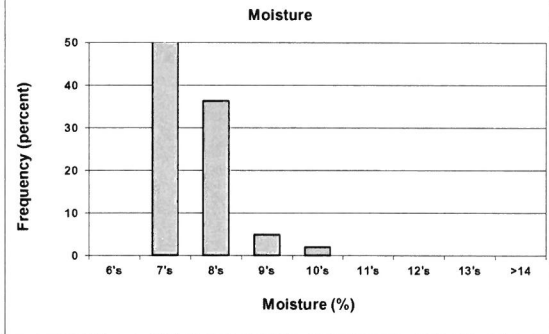
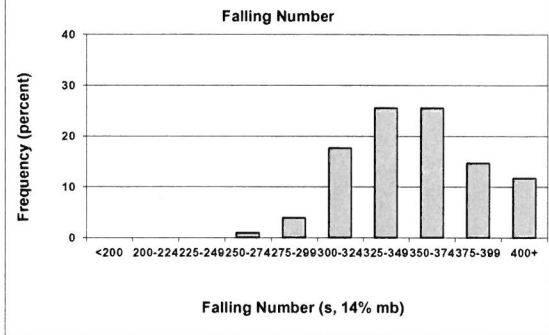
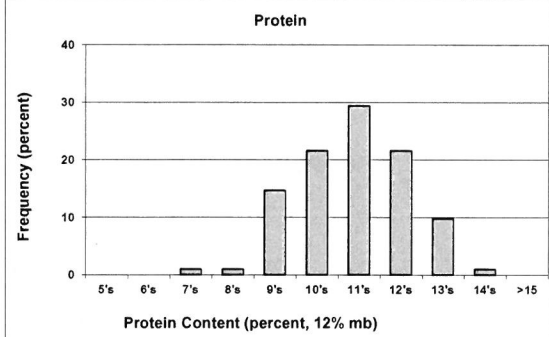
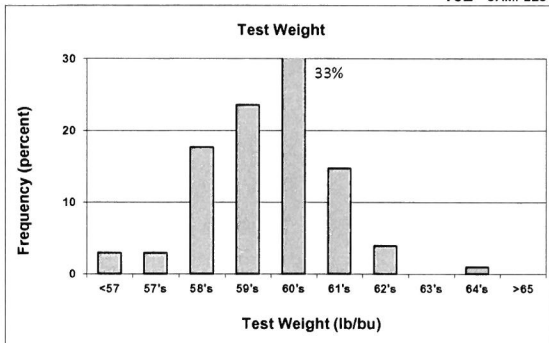
2021 CROP WEEK 2: July 29, 2021																				
Grading Data											Quality Data									
Class	District	Number of Samples	Test Weight (lb/bu)	Test Weight (kg/m <sup>3</sup> )	Dockage (%)	Heat Damage (%)	Total Damage (%)	Foreign Material (%)	Shrunk & Broken (%)	Total Defects (%)	Moisture (%)	Protein (% 12% mb)			Falling Number (s, 14%mb)	Thousand Kernel Weight (g, 14% mb)	Kernel Hardness (-20 to 120)	Kernel Size (mm)	Ash (% 14% mb)	Wet Gluten (% 14% mb)
												Average	Low	High						
SWH	NC	52	59.9	78.8	0.3	0.0	0.0	0.0	0.9	0.9	7.7	11.5	7.7	13.9	362	28.9	40.5	2.52	1.27	27.3
SWH	NE	25	59.9	78.8	0.4	0.0	0.0	0.0	0.8	0.8	8.1	11.3	9.4	14.1	349	27.1	38.9	2.47	1.32	27.1
SWH	C	25	60.1	79.1	0.4	0.0	0.1	0.0	0.9	1.0	8.3	11.0	8.8	13.4	338	29.9	36.6	2.55	1.40	26.5
	<b>Crop Year Average</b>																			
SWH	<b>10</b>	102	59.9	78.8	0.3	0.0	0.0	0.0	0.9	0.9	7.9	11.3			350	28.7	39.2	2.51	1.31	27.1
SWH	<b>11</b>	389	61.9	81.4	0.5	0.0	0.0	0.0	0.4	0.5	9.2	9.8			323	36.3	32.2	2.77	1.35	29.3
WHCB	NC	23	60.6	79.7	0.3	0.0	0.0	0.0	1.1	1.1	7.7	10.7	8.9	13.5	351	29.7	41.1	2.48	1.25	*
WHCB	C	1	58.7	77.3	1.2	0.0	0.0	0.2	1.2	1.4	7.4	10.6	10.6	10.6	351	24.1	35.9	2.40	1.47	*
	<b>Crop Year Average</b>																			
WHCB	<b>2021</b>	25	60.448	79.5	0.3	0.0	0.0	0.0	1.1	1.1	7.7	10.7			350	29.6	40.9	2.48	1.27	*
WHCB	<b>2020</b>	95	61.581	81.0	0.5	0.0	0.0	0.0	0.8	0.9	8.5	9.8			322	32.3	31.4	2.61	1.27	18.0
HRW	NC	9	60.0	78.9	0.1	0.0	0.0	0.0	1.2	1.2	8.1	13.1	11.0	16.3	397	31.9	74.0	2.69	1.48	30.3
HRW	NE	6	58.8	77.4	0.4	0.0	0.0	0.0	1.1	1.1	7.8	12.8	11.5	14.3	351	26.0	77.0	2.54	1.33	28.2
HRW	C	3	60.0	78.9	0.1	0.0	0.5	0.0	1.4	2.0	7.5	12.8	11.7	13.6	440	26.8	73.9	2.56	1.44	29.1
	<b>Crop Year Average</b>																			
HRW	<b>2021</b>	18	59.6	78.4	0.2	0.0	0.1	0.0	1.2	1.3	7.9	13.0			392	29.1	75.0	2.62	1.42	29.4
HRW	<b>2020</b>	69	62.9	82.6	0.3	0.0	0.0	0.0	0.4	0.5	9.3	11.4			351	36.7	67.6	2.87	1.40	26.8
HRS	NC	3	61.6	81.0	0.0	0.0	0.0	0.0	0.7	0.7	8.0	14.2	13.4	15.4	393	31.1	70.9	2.74	1.66	35.6
HRS	C	2	61.3	80.6	0.2	0.0	0.0	0.3	0.8	1.1	7.7	15.5	14.8	16.1	402	27.6	82.6	2.65	1.58	40.7
	<b>Crop Year Average</b>																			
HRS	<b>2021</b>	5	61.4	80.8	0.1	0.0	0.0	0.1	0.7	0.9	7.9	14.7			397	29.7	75.6	2.70	1.63	37.6
HRS	<b>2020</b>	65	62.8	82.5	0.5	0.0	0.1	0.0	0.4	0.5	9.2	14.1			360	32.6	72.1	2.78	1.60	35.6

\* Glutomatic - laboratory equipment to measure wet gluten content was not able to work with this week's WHCB samples.

Distributions

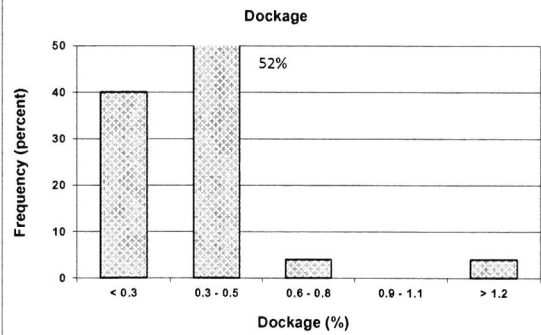
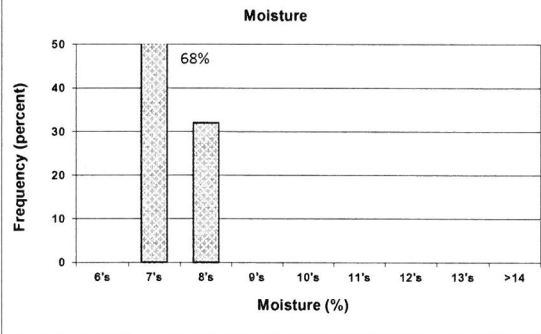
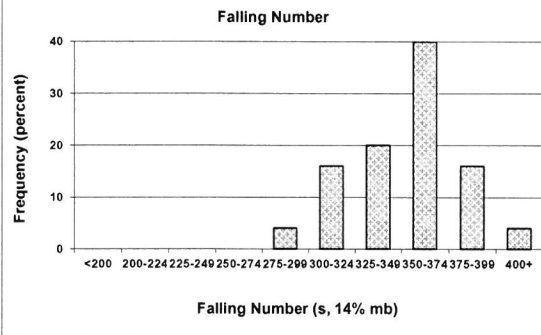
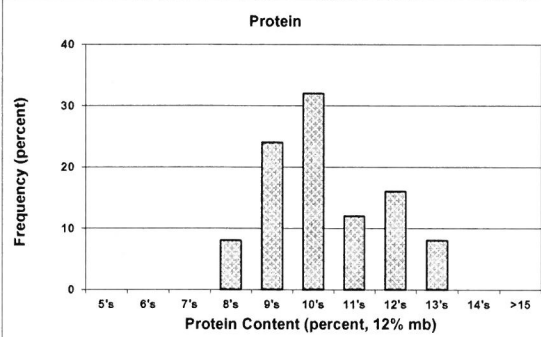
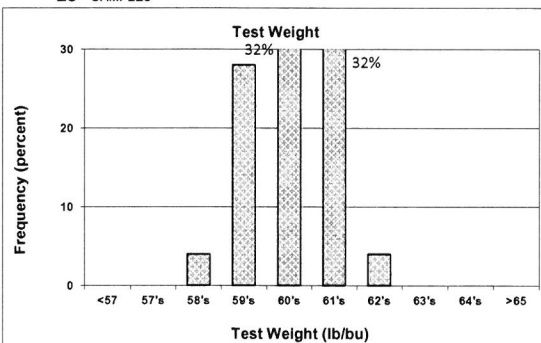
**SOFT WHITE WHEAT**

102 SAMPLES



**WHITE CLUB WHEAT**

25 SAMPLES



Prepared by: Wheat Marketing Center, Portland, Oregon