



2021 PACIFIC NORTHWEST CROP QUALITY REPORT

WEEK 3: AUGUST 5, 2021

We received a total of 238 samples by the end of the third week reporting period for the 2021 Pacific Northwest wheat harvest.

Of the 88 wheat samples we received in the third week, 52 were soft white (SWH), 12 were white club (WHCB), 19 were hard red winter (HRW), and 5 were hard red spring (HRS). Thirty-nine samples (44%) came from District 8 (East Central Washington), 17 (19%) came from District 11 (Northern Idaho), 11 (13%) came from District 4 (North Central Oregon), and less than 10% each came from Southwestern Oregon, Northeastern Oregon, Western Washington, Northeastern Washington, Northern Idaho, and Southwestern Idaho.

USDA Economic Statistics Districts (Table 1) showed the following: Test weight averages for SWH ranged from 58.1 to 61.2 lb/bu (76.5 to 80.5 kg/hl), and dockage ranged from 0.2 to 0.7%. Wheat moisture content averages ranged from 7.7 to 9.5%. Average SWH wheat protein content (12% mb) decreased slightly to 11.2% from 11.3% last week. SWH falling number average value (14% mb) remained similar to that of last week at 349 seconds. Thousand kernel weight (14% mb) and kernel size were lighter and smaller to last year's averages, respectively. Average WHCB test weight was lower at 60.0 lb/bu compared with 61.6 lb/bu last year. Average WHCB wheat protein (12% mb) was higher at 10.9% compared with 9.8% last year. Average WHCB falling number value (14% mb) was 343 seconds. HRW and HRS averages appeared to have similar trends to SWH and WHCB, with lighter test weight, lower moisture, higher protein content, lighter kernel weight, and smaller kernels compared to last year.

We will continue to report the six PNW Production Zones (Table 2): Northwest (NW), Southwest (SW), North Central (NC), Central (C), Northeast (NE), and Southeast (SE). The Zones are based on country elevator locations and climatic conditions. Forty-one percent of this week's samples came from Zone NC, 20% came from Zone C, 18% came from Zone NE, and 9% came from SE.

As of the third week, SWH had lower test weight (59.8 lb/bu), slightly lower dockage (0.4%), higher shrunken and broken kernels, similar grading factors, lower moisture (8.0%), higher protein (11.2%), higher falling number value (349 seconds), lighter thousand kernel weight, and smaller kernel size compared to last year.



BY USDA ECONOMIC STATISTICS DISTRICTS

Table 1

2021 CROP WEEK 3: August 5, 2021																				
		Grading Data										Quality Data								
Class	District	Number of Samples	Test Weight (lb/bu)	Test Weight (kg/hl)	Dockage (%)	Heat Damage (%)	Total Damage (%)	Foreign Material (%)	Shrunk & Broken (%)	Total Defects (%)	Moisture (%)	Protein (% 12% mb)			Falling Number (g, 14% mb)	Thousand Kernel Weight (g, 14% mb)	Kernel Hardness (<20 to 120)	Kernel Size (mm)	Ash (% 14% mb)	Wet Gluten (% 14% mb)
												Average	Low	High						
SWH	3	3	60.5	79.5	0.6	0.0	0.0	0.0	0.4	0.4	9.5	10.2	9.4	11.2	349	39.3	24.7	2.81	1.70	16.1
SWH	4	25	59.9	78.8	0.5	0.0	0.1	0.0	0.9	1.0	8.3	11.0	8.6	13.4	348	29.1	38.0	2.53	1.38	27.0
SWH	5	11	59.9	78.8	0.3	0.0	0.0	0.0	0.8	0.8	8.2	10.4	8.8	12.2	336	30.2	33.8	2.58	1.49	23.2
SWH	6/7	4	59.8	78.6	0.7	0.0	0.0	0.2	1.3	1.5	8.6	11.3	9.4	12.5	332	27.3	33.1	2.54	1.32	28.5
SWH	8	64	59.7	78.5	0.3	0.0	0.0	0.0	0.8	0.9	7.7	11.5	7.7	13.8	354	28.5	41.2	2.51	1.27	27.6
SWH	9	1	58.1	76.5	0.2	0.0	0.0	0.0	1.4	1.4	8.2	10.7	10.7	10.7	316	27.2	36.4	2.45	1.26	27.7
SWH	10	19	59.9	78.9	0.2	0.0	0.0	0.0	1.0	1.0	7.8	11.4	9.3	13.9	346	28.0	39.8	2.49	1.30	27.0
SWH	11	21	59.3	78.0	0.4	0.0	0.0	0.0	1.0	1.0	8.2	11.5	9.4	14.1	354	26.2	35.7	2.44	1.39	27.3
SWH	12	6	61.2	80.5	0.2	0.0	0.0	0.0	0.5	0.5	9.1	9.8	9.2	11.1	335	39.4	25.3	2.82	1.65	16.4
	Crop Year Average																			
SWH	2021	154	59.8	78.7	0.4	0.0	0.0	0.0	0.9	0.9	8.0	11.2			349	28.9	38.0	2.52	1.35	26.4
SWH	2020	389	61.9	81.4	0.5	0.0	0.0	0.0	0.4	0.5	9.2	9.8			323	36.3	32.2	2.77	1.35	29.3
WHCB	5	2	59.0	77.6	0.8	0.0	0.0	0.1	1.0	1.1	7.9	9.2	7.8	10.6	312	25.8	33.6	2.43	1.45	—
WHCB	6/7	4	59.5	78.3	0.2	0.0	0.0	0.1	1.0	1.1	7.8	10.0	9.0	10.8	319	29.8	40.7	2.49	1.28	—
WHCB	8	29	60.4	79.4	0.4	0.0	0.0	0.1	1.2	1.2	7.7	11.1	8.9	13.5	350	28.2	40.9	2.44	1.27	—
WHCB	10	1	61.0	80.2	0.2	0.0	0.0	0.0	0.8	0.8	7.8	10.0	10.0	10.0	370	27.7	57.3	2.47	1.25	—
WHCB	11	1	54.0	71.2	1.1	0.0	0.0	0.0	7.7	7.7	8.7	12.9	12.9	12.9	283	19.5	39.3	2.14	1.41	—
	Crop Year Average																			
WHCB	2021	37	60.0	79.0	0.4	0.0	0.0	0.1	1.3	1.4	7.7	10.9			343	28.0	40.9	2.43	1.29	—
WHCB	2020	95	61.6	81.0	0.5	0.0	0.0	0.0	0.8	0.9	8.5	9.8			322	32.3	31.4	2.61	1.27	18.0
HRW	4	2	61.1	80.3	0.1	0.0	0.8	0.0	1.7	2.5	7.4	12.7	11.7	13.6	431	26.5	79.7	2.50	1.36	29.0
HRW	5	1	60.9	80.1	0.2	0.0	0.0	0.0	0.4	0.4	8.3	12.0	12.0	12.0	390	35.3	69.5	2.89	1.56	27.6
HRW	6/7	6	60.1	79.0	0.1	0.0	0.0	0.0	1.1	1.1	8.5	13.3	11.0	16.3	449	31.3	71.6	2.66	1.53	31.5
HRW	8	12	60.9	80.2	0.2	0.0	0.0	0.0	0.7	0.7	7.7	12.6	9.2	14.6	381	30.7	73.1	2.70	1.35	30.6
HRW	10	4	59.2	77.9	0.2	0.0	0.0	0.0	1.1	1.1	7.5	12.9	11.5	13.9	342	26.7	77.5	2.53	1.32	28.2
HRW	11	12	58.0	76.3	0.5	0.0	0.0	0.0	1.2	1.2	8.2	13.4	11.8	14.3	368	24.9	74.7	2.48	1.35	29.6
	Crop Year Average																			
HRW	2021	37	59.6	78.5	0.3	0.0	0.0	0.0	1.0	1.1	8.0	13.0			387	28.4	74.1	2.60	1.38	30.0
HRW	2020	69	62.9	82.6	0.3	0.0	0.0	0.0	0.4	0.5	9.3	11.4			351	36.7	67.6	2.87	1.40	26.8
HRS	4	2	61.4	80.7	0.2	0.0	0.0	0.0	0.6	0.6	8.9	15.3	14.9	15.7	406	32.1	74.4	2.75	1.67	33.8
HRS	5	3	62.1	81.7	0.3	0.0	0.0	0.4	0.8	1.1	8.4	14.8	13.5	16.1	412	28.8	79.5	2.66	1.59	38.1
HRS	6/7	2	61.1	80.4	0.0	0.0	0.0	0.1	0.7	0.7	7.8	14.4	13.4	15.4	405	31.6	70.1	2.77	1.66	36.8
HRS	8	1	62.5	82.2	0.0	0.0	0.0	0.0	0.7	0.7	8.5	13.7	13.7	13.7	371	30.1	72.4	2.68	1.65	33.2
HRS	11	2	61.9	81.3	0.3	0.0	0.0	0.0	0.7	0.7	8.9	16.7	16.6	16.8	335	22.8	80.0	2.46	1.55	44.9
	Crop Year Average																			
HRS	2021	10	61.7	81.2	0.2	0.0	0.0	0.1	0.7	0.8	8.5	15.1			390	28.9	76.0	2.66	1.62	37.9
HRS	2020	65	62.8	82.5	0.5	0.0	0.1	0.0	0.4	0.5	9.2	14.1			380	32.6	72.1	2.78	1.60	35.6



BY PRODUCTION ZONES

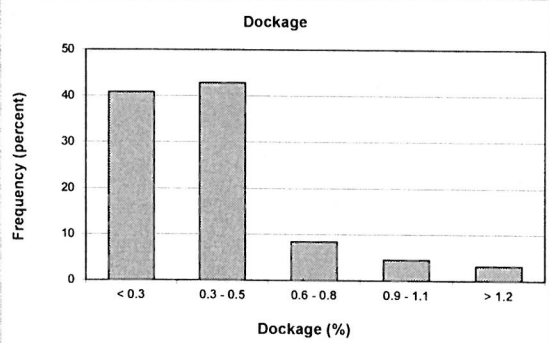
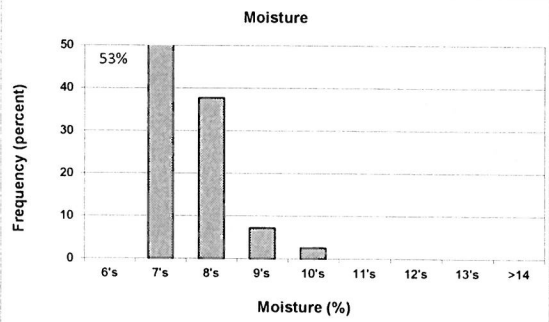
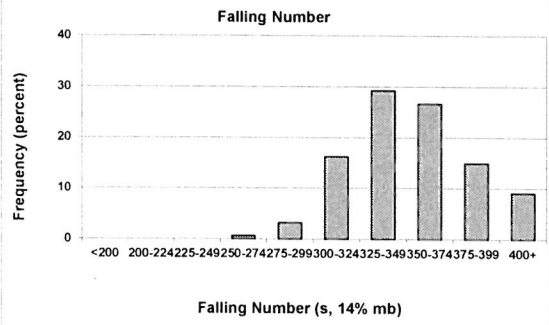
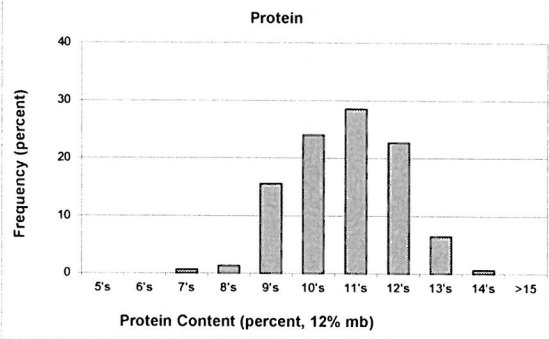
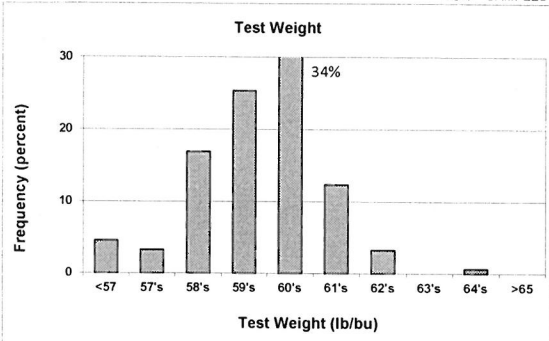
Table 2

2021 CROP WEEK 3: August 5, 2021																				
Grading Data											Quality Data									
Class	District	Number of Samples	Test Weight (lb/bu)	Test Weight (kg/Hl)	Dockage (%)	Heat Damage (%)	Total Damage (%)	Foreign Material (%)	Shrunk & Broken (%)	Total Defects (%)	Moisture (%)	Protein (% 12.5 mb)			Falling Number (e. 14%mb)	Thousand Kernel Weight (g. 14% mb)	Kernel Hardness (-20 to 120)	Kernel Size (mm)	Ash (% 14% mb)	Wet Gluten (% 14% mb)
												Average	Low	High						
SWH	NC	73	59.6	78.5	0.3	0.0	0.0	0.0	0.9	0.9	7.7	11.6	7.7	13.9	361	28.3	41.0	2.50	1.29	27.8
SWH	NE	32	59.7	78.5	0.4	0.0	0.0	0.0	0.9	0.9	8.2	11.2	9.4	14.1	345	27.0	37.2	2.46	1.34	26.6
SWH	C	40	59.9	78.8	0.5	0.0	0.1	0.0	0.9	1.0	8.3	10.8	8.6	13.4	343	29.2	36.3	2.54	1.40	26.1
SWH	SE	9	60.9	80.2	0.3	0.0	0.0	0.0	0.5	0.5	9.2	9.9	9.2	11.2	338	39.4	25.1	2.81	1.67	16.3
	Crop Year Average																			
SWH	2021	154	59.8	78.7	0.4	0.0	0.0	0.0	0.9	0.9	8.0	11.2			349	28.9	38.0	2.52	1.35	26.4
SWH	2020	389	61.9	81.4	0.5	0.0	0.0	0.0	0.4	0.5	9.2	9.8			323	36.3	32.2	2.77	1.35	29.3
WHCB	NC	33	60.3	79.4	0.4	0.0	0.0	0.1	1.1	1.2	7.7	10.9	8.9	13.5	347	28.3	41.4	2.44	1.27	—
WHCB	NE	1	54.0	71.2	1.1	0.0	0.0	0.0	7.7	7.7	8.7	12.9	12.9	12.9	283	19.5	39.3	2.14	1.41	—
WHCB	C	3	59.0	77.6	0.5	0.0	0.0	0.1	0.9	1.0	7.9	9.4	7.8	10.6	312	27.8	36.3	2.49	1.42	—
	Crop Year Average																			
WHCB	2021	37	60.043	79.0	0.4	0.0	0.0	0.1	1.3	1.4	7.7	10.9			343	28.0	40.9	2.43	1.29	—
WHCB	2020	95	61.581	81.0	0.5	0.0	0.0	0.0	0.8	0.9	8.5	9.8			322	32.3	31.4	2.61	1.27	18.0
HRW	NC	19	60.5	79.5	0.1	0.0	0.0	0.0	0.9	0.9	7.9	12.9	9.2	16.3	390	30.6	74.0	2.67	1.39	30.9
HRW	NE	14	58.4	76.8	0.5	0.0	0.0	0.0	1.1	1.2	8.2	13.2	11.5	14.3	365	25.3	74.7	2.49	1.35	29.1
HRW	C	4	60.2	79.2	0.1	0.0	0.4	0.0	1.2	1.6	7.7	12.6	11.7	13.6	426	28.9	72.8	2.64	1.47	28.8
	Crop Year Average																			
HRW	2021	37	59.6	78.5	0.3	0.0	0.0	0.0	1.0	1.1	8.0	13.0			387	28.4	74.1	2.60	1.38	30.0
HRW	2020	69	62.9	82.6	0.3	0.0	0.0	0.0	0.4	0.5	9.3	11.4			351	36.7	67.6	2.87	1.40	26.8
HRS	NC	3	61.6	81.0	0.0	0.0	0.0	0.0	0.7	0.7	8.0	14.2	13.4	15.4	393	31.1	70.9	2.74	1.66	35.6
HRS	NE	2	61.9	81.3	0.3	0.0	0.0	0.0	0.7	0.7	8.9	16.7	16.6	16.8	335	22.8	80.0	2.46	1.55	44.9
HRS	C	5	61.8	81.3	0.3	0.0	0.0	0.2	0.7	0.9	8.6	15.0	13.5	16.1	409	30.1	77.5	2.70	1.62	36.4
	Crop Year Average																			
HRS	2021	10	61.7	81.2	0.2	0.0	0.0	0.1	0.7	0.8	8.5	15.1			390	28.9	76.0	2.66	1.62	37.9
HRS	2020	65	62.8	82.5	0.5	0.0	0.1	0.0	0.4	0.5	9.2	14.1			380	32.6	72.1	2.78	1.60	35.6

Distributions

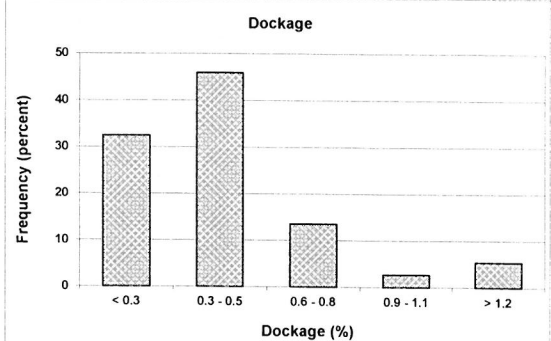
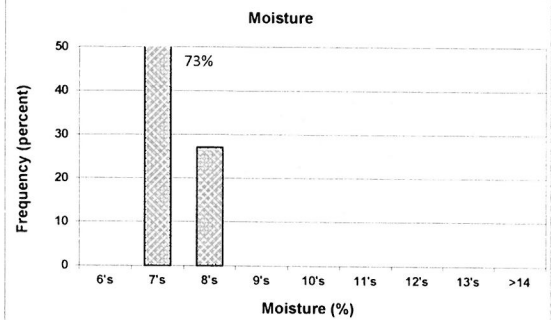
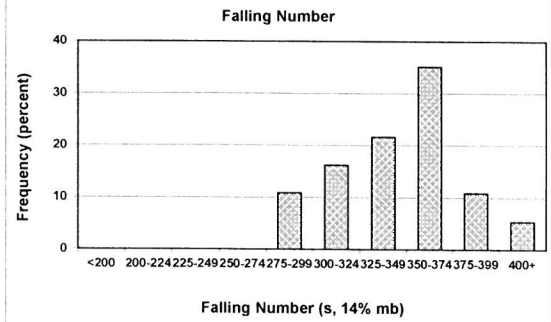
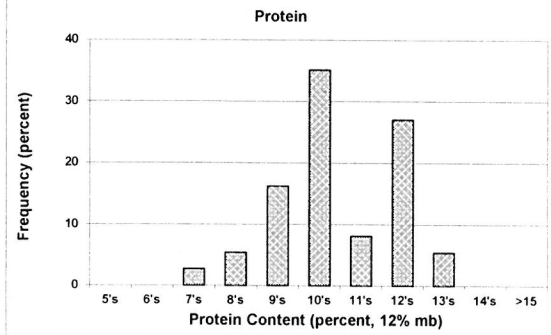
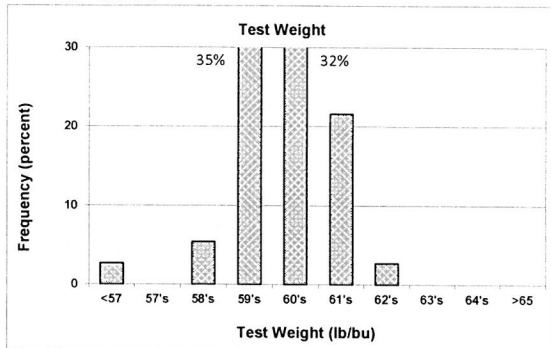
SOFT WHITE WHEAT

154 SAMPLES



WHITE CLUB WHEAT

37 SAMPLES



Prepared by: Wheat Marketing Center, Portland, Oregon