



2021 PACIFIC NORTHWEST CROP QUALITY REPORT

WEEK 6: August 26, 2021

We received and tested 456 samples at the end of the sixth week for the Pacific Northwest 2021 wheat harvest.

Of the 50 wheat samples tested for this week, 25 were soft white (SWH), 9 were white club (WHCB), and 16 were hard red spring (HRS). Thirteen samples (26%) came from District 8 (East Central Washington); 10 (20%) each came from Districts 4 (North Central Oregon) and 11 (Northern Idaho); and fewer than 10 came from Districts 1\2 (Western Oregon), 5 (Northeastern Oregon), 6\7 (Western Washington), and 9 (Northeastern Washington).

USDA Economic Statistics Districts (Table 1) data remained similar to last week as follows: Test weights for SWH ranged from 58.9 to 61.4 lb/bu with weighted average at 59.6 lb/bu (78.4 kg/hl). SWH dockage ranged from 0.2 to 1.1%. SWH wheat moisture contents ranged from 7.9 to 10.5% with weighted average at 8.6%. Average SWH wheat protein content (12% mb) was 11.1% and the range is from 9.2 to 12.6%. SWH falling number average value (14% mb) was 345 seconds. WHCB data stayed similar to last week. No new HRW samples were received this week. With 16 new HRS samples for this week, test weight weighted average went down to 60.4 lb/bu from 61.5 lb/bu last week and 62.8 lb/bu last year and wheat protein (12% mb) was higher at 16.0% from 15.1% last week and 14.1% last year.

We continue to report the six PNW Production Zones (Table 2): Northwest (NW), Southwest (SW), North Central (NC), Central (C), Northeast (NE), and Southeast (SE). The Zones are based on country elevator locations and climatic conditions. This week's samples came from Zones C (38%), NC (26%), NE (26%), and SW (10%).

Year-to-date the SWH average protein (12% mb) was the highest for Zone NE at 11.7% followed by Zone NC at 11.6%; the lowest was in Zone SW at 9.2%. The WHCB average protein (12% mb) was the highest at 12.2% for Zone NE, and the lowest at 9.4% for Zone C. The average wheat protein (12% mb) in the highest WHCB producing zone (NC) was 11.3%.



BY USDA ECONOMIC STATISTICS DISTRICTS

Table 1

2021 CROP WEEK 6: August 26, 2021																					
		Grading Data										Quality Data									
Class	District	Number of Samples	Test Weight (lb/bu)	Test Weight (kg/hl)	Dockage (%)	Heat Damage (%)	Total Damage (%)	Foreign Material (%)	Shrunk & Broken (%)	Total Defects (%)	Moisture (%)	Protein (% 12% mb)			Falling Number (s, 14%mb)	Thousand Kernel Weight (g, 14% mb)	Kernel Hardness (20 to 120)	Kernel Size (mm)	Ash (% 14% mb)	Wet Gluten (% 14% mb)	
												Average	Low	High							
SWH	1/2	20	61.4	80.8	0.5	0.0	0.0	0.0	0.8	0.8	10.5	9.2	5.5	11.8	336	36.6	32.8	2.75	1.44	19.1	
SWH	3	3	60.5	79.5	0.6	0.0	0.0	0.0	0.4	0.4	9.5	10.2	9.4	11.2	349	39.3	24.7	2.81	1.70	16.1	
SWH	4	56	59.6	78.4	0.5	0.0	0.1	0.0	0.9	1.0	8.3	11.4	8.6	14.8	346	27.8	38.9	2.52	1.39	28.5	
SWH	5	28	59.4	78.2	0.4	0.0	0.0	0.0	0.9	0.9	8.6	10.5	7.2	13.5	341	29.0	31.0	2.57	1.88	24.5	
SWH	6/7	10	59.8	78.7	0.4	0.0	0.0	0.1	1.1	1.2	8.6	11.4	9.4	12.5	342	26.9	32.1	2.49	1.30	29.1	
SWH	8	79	59.7	78.5	0.3	0.0	0.0	0.0	1.0	1.0	7.8	11.4	7.7	13.8	351	28.5	39.6	2.50	1.29	27.2	
SWH	9	13	56.2	74.0	1.1	0.0	0.1	0.2	2.6	2.8	9.5	12.6	10.0	14.3	349	22.1	34.5	2.38	1.55	29.8	
SWH	10	27	59.6	78.4	0.2	0.0	0.0	0.0	1.0	1.0	7.9	11.6	9.3	13.9	348	27.0	38.5	2.48	1.35	27.6	
SWH	11	28	58.9	77.5	0.4	0.0	0.0	0.0	1.1	1.1	8.5	11.6	9.4	14.1	352	25.8	33.7	2.43	1.42	27.5	
SWH	12	6	61.2	80.5	0.2	0.0	0.0	0.0	0.5	0.5	9.1	9.8	9.2	11.1	335	39.4	25.3	2.82	1.65	16.4	
SWH	13	3	60.8	79.9	0.4	0.0	0.0	0.0	1.0	1.0	8.4	10.4	9.2	12.0	357	38.5	27.5	2.80	1.73	19.8	
SWH	14	29	60.0	78.9	0.4	0.0	0.0	0.0	0.5	0.5	10.2	10.7	9.0	12.8	328	34.4	25.3	2.67	1.64	20.0	
	Crop Year Average																				
SWH	2021	302	59.6	78.4	0.4	0.0	0.0	0.0	1.0	1.0	8.6	11.1			345	29.2	35.2	2.54	1.45	25.8	
SWH	2020	389	61.9	81.4	0.5	0.0	0.0	0.0	0.4	0.5	9.2	9.8			323	36.3	32.2	2.77	1.35	29.3	
WHCB	5	2	59.0	77.6	0.8	0.0	0.0	0.1	1.0	1.1	7.9	9.2	7.8	10.6	312	25.8	33.6	2.43	1.45	22.1	
WHCB	6/7	5	59.3	78.0	0.2	0.0	0.0	0.0	1.1	1.1	8.1	10.1	9.0	10.8	324	29.3	39.0	2.47	1.27	17.2	
WHCB	8	47	60.3	79.3	0.3	0.0	0.0	0.1	1.3	1.3	7.8	11.4	8.9	14.2	354	27.9	39.4	2.44	1.31	25.5	
WHCB	10	1	61.0	80.2	0.2	0.0	0.0	0.0	0.8	0.8	7.8	10.0	10.0	10.0	370	27.7	57.3	2.47	1.25	25.0	
WHCB	11	6	56.7	74.7	0.9	0.0	0.0	0.0	4.9	4.9	8.2	12.2	10.8	12.9	313	20.9	40.7	2.25	1.44	30.2	
	Crop Year Average																				
WHCB	2021	61	59.8	78.7	0.4	0.0	0.0	0.1	1.6	1.6	7.9	11.3			347	27.2	39.6	2.42	1.33	25.2	
WHCB	2020	95	61.6	81.0	0.5	0.0	0.0	0.0	0.8	0.9	8.5	9.8			322	32.3	31.4	2.61	1.27	18.0	
HRW	4	4	62.2	81.8	0.4	0.0	0.4	0.0	1.0	1.4	7.9	12.4	11.6	13.6	404	27.9	77.2	2.58	1.31	29.3	
HRW	5	1	60.9	80.1	0.2	0.0	0.0	0.0	0.4	0.4	8.3	12.0	12.0	12.0	390	35.3	69.5	2.89	1.56	27.6	
HRW	6/7	7	60.3	79.3	0.1	0.0	0.0	0.0	1.1	1.1	8.5	13.5	11.0	16.3	452	31.0	72.3	2.66	1.49	32.2	
HRW	8	20	61.0	80.2	0.1	0.0	0.0	0.1	0.8	0.9	8.0	12.7	9.2	14.6	400	30.2	72.7	2.69	1.41	30.3	
HRW	10	5	59.9	78.8	0.2	0.0	0.0	0.0	0.9	1.0	7.8	12.8	11.5	13.9	353	27.5	75.3	2.55	1.29	27.8	
HRW	11	13	57.9	76.2	0.5	0.0	0.0	0.0	1.2	1.2	8.1	13.4	11.8	14.3	371	25.0	74.8	2.48	1.36	29.5	
HRW	14	6	58.1	76.5	0.6	0.0	0.0	0.0	1.0	1.0	9.1	12.8	11.4	14.4	349	31.6	69.9	2.74	1.70	30.9	
	Crop Year Average																				
HRW	2021	56	59.9	78.8	0.3	0.0	0.0	0.0	0.9	1.0	8.2	12.9			390	28.9	73.4	2.63	1.42	30.1	
HRW	2020	69	62.9	82.6	0.3	0.0	0.0	0.0	0.4	0.5	9.3	11.4			351	36.7	67.6	2.87	1.40	26.8	
HRS	4	3	60.9	80.1	0.4	0.0	0.0	0.0	0.6	0.6	8.8	15.0	14.3	15.7	436	28.4	74.4	2.65	1.56	34.5	
HRS	5	3	62.1	81.7	0.3	0.0	0.0	0.4	0.8	1.1	8.4	14.8	13.5	16.1	412	28.8	79.5	2.66	1.59	38.1	
HRS	6/7	2	61.1	80.4	0.0	0.0	0.0	0.1	0.7	0.7	7.8	14.4	13.4	15.4	405	31.6	70.1	2.77	1.66	36.8	
HRS	8	15	60.1	79.0	0.5	0.0	0.2	0.0	2.8	3.0	9.0	16.3	13.6	18.4	355	26.1	69.1	2.56	1.72	42.6	
HRS	9	3	59.3	78.1	0.7	0.0	0.0	0.0	0.8	0.8	9.0	17.3	17.0	17.9	364	23.0	69.5	2.51	1.56	44.0	
HRS	10	3	59.5	78.2	0.4	0.0	0.0	0.1	2.9	3.0	8.1	15.6	14.2	17.1	410	20.7	83.0	2.50	1.77	39.1	
HRS	11	5	61.0	80.2	0.4	0.0	0.1	0.0	0.7	0.8	10.1	16.4	16.1	16.8	336	23.7	73.8	2.45	1.55	40.3	
	Crop Year Average																				
HRS	2021	34	60.4	79.5	0.4	0.0	0.1	0.1	1.8	2.0	8.9	16.0			373	25.8	72.5	2.56	1.66	40.6	
HRS	2020	65	62.8	82.5	0.5	0.0	0.1	0.0	0.4	0.5	9.2	14.1			380	32.6	72.1	2.78	1.60	35.6	



BY PRODUCTION ZONES

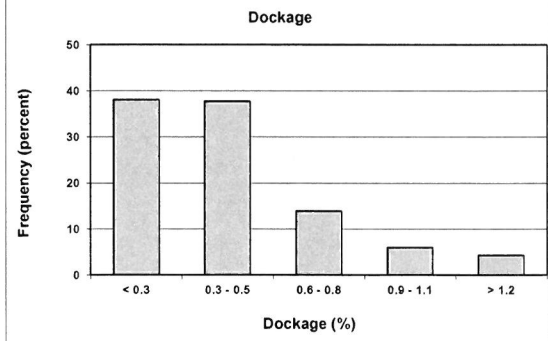
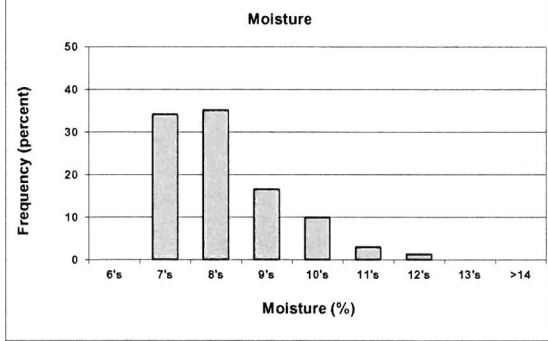
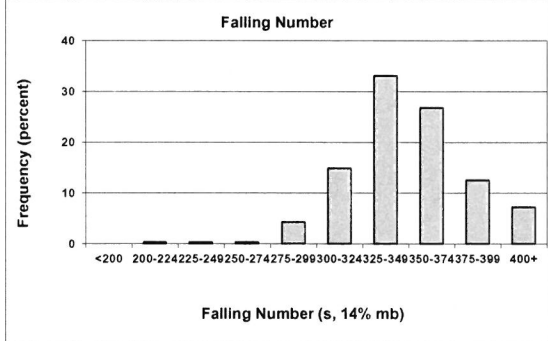
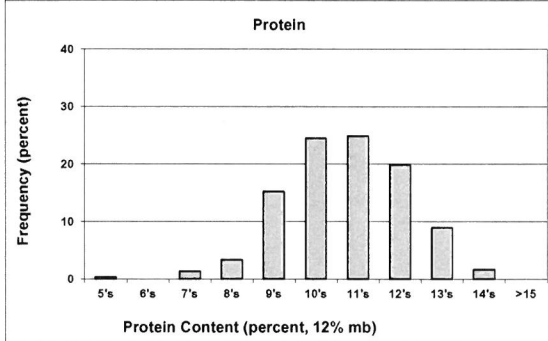
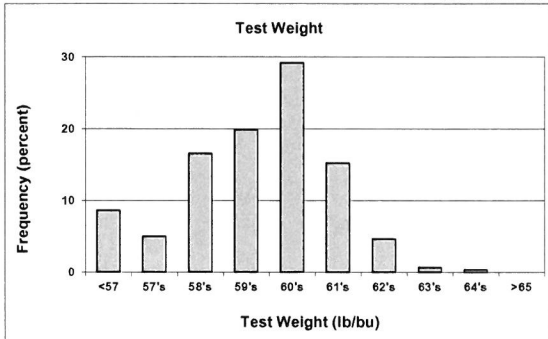
Table 2

2021 CROP WEEK 6: August 26, 2021																					
Class	District	Number of Samples	Grading Data									Quality Data									
			Test Weight (lbibu)	Test Weight (kg/hl)	Dockage (%)	Heat Damage (%)	Total Damage (%)	Foreign Material (%)	Shrunk & Broken (%)	Total Defects (%)	Moisture (%)	Protein (% 12% mb)			Falling Number (s, 14%mb)	Thousand Kernel Weight (g, 14% mb)	Kernel Hardness (-20 to 120)	Kernel Size (mm)	Ash (% 14% mb)	Wet Gluten (% 14% mb)	
			Average	Low	High																
SWH	NW	1	59.2	77.9	0.5	0.0	0.0	0.0	0.0	1.4	1.4	8.7	10.6	10.6	10.6	352	26.1	29.6	2.47	1.49	24.9
SWH	NC	97	59.6	78.4	0.3	0.0	0.0	0.0	0.0	1.0	1.0	7.8	11.6	7.7	13.9	357	28.1	38.9	2.49	1.30	27.7
SWH	NE	53	58.5	77.0	0.6	0.0	0.0	0.0	0.0	1.4	1.4	8.7	11.7	9.4	14.3	347	25.3	35.6	2.43	1.42	27.6
SWH	C	90	59.6	78.4	0.4	0.0	0.1	0.0	0.0	0.9	1.0	8.4	11.1	7.2	14.8	343	28.2	36.0	2.54	1.53	27.3
SWH	SW	20	61.4	80.8	0.5	0.0	0.0	0.0	0.0	0.8	0.8	10.5	9.2	5.5	11.8	336	36.6	32.8	2.75	1.44	19.1
SWH	SE	41	60.2	79.2	0.4	0.0	0.0	0.0	0.0	0.5	0.5	9.8	10.5	9.0	12.8	332	35.8	25.4	2.71	1.66	19.2
Crop Year Average																					
SWH	2021	302	59.6	78.4	0.4	0.0	0.0	0.0	0.0	1.0	1.0	8.6	11.1			345	29.2	35.2	2.54	1.45	25.8
SWH	2020	389	61.9	81.4	0.5	0.0	0.0	0.0	0.0	0.4	0.5	9.2	9.8			323	36.3	32.2	2.77	1.35	29.3
WHCB	NC	52	60.2	79.2	0.3	0.0	0.0	0.1	1.2	1.3	7.8	11.3	8.9	14.2	352	27.9	39.6	2.44	1.31	24.9	
WHCB	NE	6	56.7	74.7	0.9	0.0	0.0	0.0	4.9	4.9	8.2	12.2	10.8	12.9	313	20.9	40.7	2.25	1.44	30.2	
WHCB	C	3	59.0	77.6	0.5	0.0	0.0	0.1	0.9	1.0	7.9	9.4	7.8	10.6	312	27.8	36.3	2.49	1.42	20.8	
Crop Year Average																					
WHCB	2021	61	59.8	78.7	0.4	0.0	0.0	0.1	1.6	1.6	7.9	11.3			347	27.2	39.6	2.42	1.33	25.2	
WHCB	2020	95	61.6	81.0	0.5	0.0	0.0	0.0	0.8	0.9	8.5	9.8			322	32.3	31.4	2.61	1.27	18.0	
HRW	NC	27	60.7	79.8	0.1	0.0	0.0	0.1	0.9	1.0	8.0	12.9	9.2	16.3	402	30.2	73.4	2.67	1.42	30.6	
HRW	NE	16	58.6	77.1	0.4	0.0	0.0	0.0	1.1	1.1	8.2	13.1	11.5	14.3	370	25.7	74.3	2.50	1.34	28.9	
HRW	C	7	61.4	80.7	0.2	0.0	0.2	0.0	0.9	1.1	8.0	12.8	11.6	14.8	418	29.1	73.9	2.65	1.38	30.1	
HRW	SE	6	58.1	76.5	0.6	0.0	0.0	0.0	1.0	1.0	9.1	12.8	11.4	14.4	349	31.6	69.9	2.74	1.70	30.9	
Crop Year Average																					
HRW	2021	56	59.9	78.8	0.3	0.0	0.0	0.0	0.9	1.0	8.2	12.9			390	28.9	73.4	2.63	1.42	30.1	
HRW	2020	69	62.9	82.6	0.3	0.0	0.0	0.0	0.4	0.5	9.3	11.4			351	36.7	67.6	2.87	1.40	26.8	
HRS	NC	18	60.4	79.4	0.4	0.0	0.1	0.0	2.5	2.6	8.9	16.0	13.4	18.4	362	26.6	69.8	2.59	1.70	41.7	
HRS	NE	10	59.8	78.7	0.5	0.0	0.0	0.0	1.4	1.5	9.3	16.6	15.5	17.9	359	22.6	74.5	2.46	1.63	41.3	
HRS	C	6	61.5	80.9	0.4	0.0	0.0	0.2	0.7	0.9	8.6	14.9	13.5	16.1	424	28.6	77.0	2.66	1.57	36.3	
Crop Year Average																					
HRS	2021	34	60.4	79.5	0.4	0.0	0.1	0.1	1.8	2.0	8.9	16.0			373	25.8	72.5	2.56	1.66	40.6	
HRS	2020	65	62.8	82.5	0.5	0.0	0.1	0.0	0.4	0.5	9.2	14.1			380	32.6	72.1	2.78	1.60	35.6	

Distributions

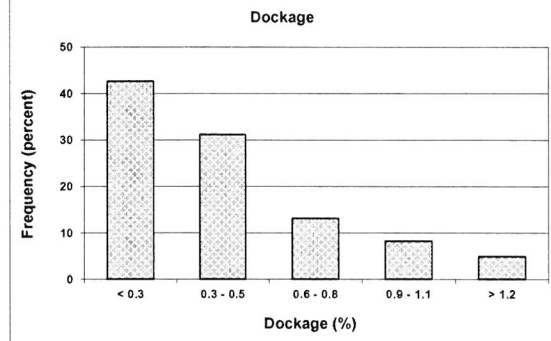
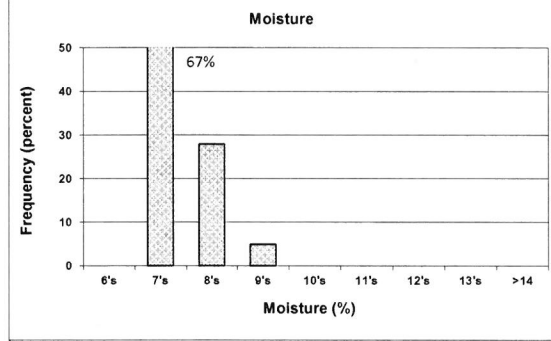
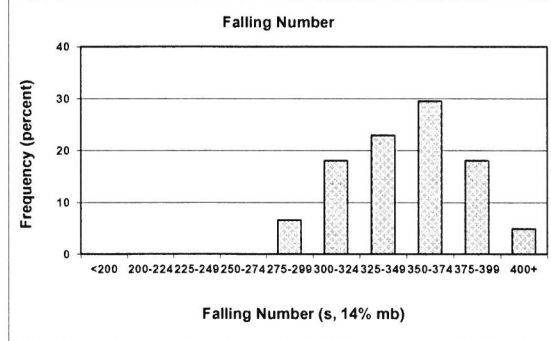
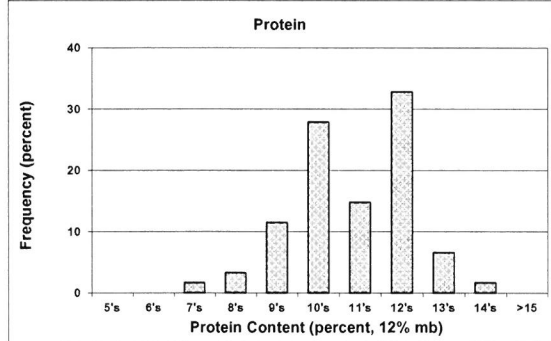
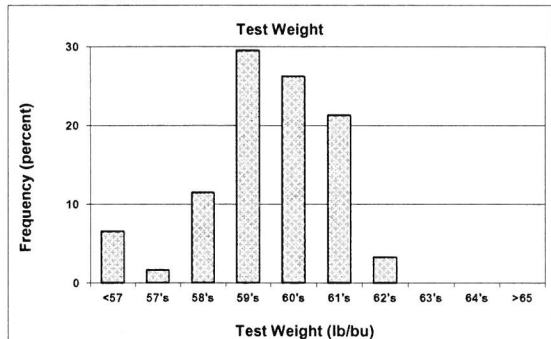
SOFT WHITE WHEAT

302 SAMPLES



WHITE CLUB WHEAT

61 SAMPLES



Prepared by: Wheat Marketing Center, Portland, Oregon