



2021 PACIFIC NORTHWEST CROP QUALITY REPORT

WEEK 7: SEPTEMBER 2, 2021

The Pacific Northwest 2021 wheat harvest is essentially done in Idaho and Oregon, but we are still waiting more samples from Washington. So far, we received and tested 536 samples at the end of the seventh week. There will be another weekly report to cover more late harvested samples.

Of the 80 wheat samples received for the seventh week, 42 were soft white (SWH), 5 were white club (WHCB), 15 were hard red winter (HRW), 7 were hard red spring (HRS), and 11 were hard white wheat. Twenty-nine samples (36%) came from District 14 (Southeastern Idaho), 21 (26%) were from District 13 (South Central Idaho), 11 (14%) were from District 4 (North Central Oregon), and fewer than 10 came from Districts 3 (Southern Oregon), 5 (Northeastern Oregon), 6/7 (Western Washington), 8 (East Central Washington), 9 (Northeastern Washington), and 12 (Southwestern Idaho).

USDA Economic Statistics Districts (Table 1) showed the following: Test weights for SWH ranged from 58.9 to 61.4 lb/bu with weighted average at 59.4 lb/bu (78.1 kg/hl). SWH dockage ranged from 0.2 to 1.1%, unchanged from last week. Wheat moisture contents ranged from 7.8 to 10.5% with weighted average at 8.8%. Average SWH wheat protein content (12% mb) was 11.2%, slightly increased from 11.1% last week. SWH falling number average value (14% mb) was 344 seconds. The highest SWH whole meal wet gluten value (14% mb) was shown in District 9 at 29.8% followed by District 6/7 at 28.8% with 12.6% and 11.4% protein contents (12% mb), respectively. WHCB weighted averages indicated good test weight at 59.7 lb/bu (78.5 kg/hl), low moisture content at 8.0%, high protein (12% mb) at 11.4%, sound falling number value (14% mb) at 345 seconds, and light thousand kernel weight at 27.1g. Both HRW and HRS weighted averages showed lower test weight, higher protein content, and sound falling number values compared to last year.

We continue to report results for the six PNW Production Zones: Northwest (NW), Southwest (SW), North Central (NC), Central (C), Northeast (NE), and Southeast (SE). The Zones are based on country elevator locations and climatic conditions. Most of this week samples came from Zones SE (73%), and C (23%).

The SWH average protein (12% mb) remains the highest for Zone NE at 11.7% followed by Zone NC at 11.6%, and the lowest for Zone SW at 9.5% followed by Zone SE at 10.8%. The WHCB average protein (12% mb) was the highest at 13.1% for Zone NE with 8 samples and the lowest at 10.6% for Zone C with 5 samples.

Please note that we have made a change to the wheat protein bar graphs on the distribution page. In response to a customer request, the revised graph shows additional details.

1200 N.W. Naito Parkway, Suite 230, Portland, OR 97209-2831
Ph: (503) 295-0823 FAX (503) 295-2735 Email: info@wmcinc.org



BY USDA ECONOMIC STATISTICS DISTRICTS

Table 1

2021 CROP WEEK 7: September 2, 2021																					
		Grading Data										Quality Data									
Class	District	Number of Samples	Test Weight (lb/bu)	Test Weight (kg/ht)	Dockage (%)	Heat Damage (%)	Total Damage (%)	Foreign Material (%)	Shrunk & Broken (%)	Total Defects (%)	Moisture (%)	Protein (% 12% mb)			Falling Number (s, 14%mb)	Thousand Kernel Weight (g, 14%mb)	Kernel Hardness (-20 to 120)	Kernel Size (mm)	Ash (% 14% mb)	Wet Gluten (% 14% mb)	
												Average	Low	High							
SWH	1/2	20	61.4	80.8	0.5	0.0	0.0	0.0	0.8	0.8	10.5	9.2	5.5	11.8	336	36.6	32.8	2.75	1.44	19.1	
SWH	3	4	59.3	78.0	0.8	0.0	0.0	0.1	2.5	2.6	9.5	11.6	9.4	15.6	367	33.1	36.6	2.72	1.71	21.7	
SWH	4	65	59.2	77.9	0.5	0.0	0.1	0.0	1.0	1.1	8.4	11.5	8.6	14.8	348	27.3	38.1	2.51	1.40	28.7	
SWH	5	33	59.0	77.6	0.5	0.0	0.0	0.0	1.1	1.1	8.8	10.8	7.2	15.4	343	28.4	30.2	2.55	1.85	24.8	
SWH	6/7	11	60.0	78.9	0.5	0.0	0.0	0.1	1.1	1.1	8.7	11.4	9.4	12.5	341	27.3	32.4	2.50	1.28	28.8	
SWH	8	79	59.7	78.5	0.3	0.0	0.0	0.0	1.0	1.0	7.8	11.4	7.7	13.8	351	28.5	39.6	2.50	1.29	27.2	
SWH	9	13	56.2	74.0	1.1	0.0	0.1	0.2	2.6	2.8	9.5	12.6	10.0	14.3	349	22.1	34.5	2.38	1.55	29.8	
SWH	10	27	59.6	78.4	0.2	0.0	0.0	0.0	1.0	1.0	7.9	11.6	9.3	13.9	348	27.0	38.5	2.48	1.35	27.6	
SWH	11	28	58.9	77.5	0.4	0.0	0.0	0.0	1.1	1.1	8.5	11.6	9.4	14.1	352	25.8	33.7	2.43	1.42	27.5	
SWH	12	6	61.2	80.5	0.2	0.0	0.0	0.0	0.5	0.5	9.1	9.8	9.2	11.1	335	39.4	25.3	2.82	1.65	16.4	
SWH	13	12	59.0	77.7	0.5	0.0	0.2	0.0	0.6	0.8	9.6	10.9	9.2	12.4	331	36.6	16.9	2.74	1.62	24.2	
SWH	14	46	59.1	77.8	0.7	0.0	0.1	0.0	0.5	0.6	10.3	10.9	9.0	14.1	327	33.9	22.4	2.69	1.66	21.3	
	Crop Year Average																				
SWH	2021	344	59.4	78.1	0.5	0.0	0.0	0.0	1.0	1.1	8.8	11.2			344	29.4	33.6	2.55	1.47	25.9	
SWH	2020	389	61.9	81.4	0.5	0.0	0.0	0.0	0.4	0.5	9.2	9.8			323	36.3	32.2	2.77	1.35	29.3	
WHCB	4	1	56.2	74.0	0.2	0.0	0.0	0.0	2.9	2.9	9.3	13.4	13.4	13.4	313	24.6	12.9	2.33	1.83	33.3	
WHCB	5	3	59.2	77.9	0.8	0.0	0.3	0.1	1.1	1.5	8.4	9.8	7.8	11.1	305	25.3	28.8	2.45	1.51	23.6	
WHCB	6/7	5	59.3	78.0	0.2	0.0	0.0	0.0	1.1	1.1	8.1	10.1	9.0	10.8	324	29.3	39.0	2.47	1.27	17.2	
WHCB	8	48	60.2	79.2	0.4	0.0	0.0	0.1	1.3	1.3	7.8	11.4	8.9	14.2	353	28.0	38.8	2.44	1.32	25.5	
WHCB	9	2	58.4	76.8	1.8	0.0	0.0	0.1	1.7	1.8	8.8	15.5	15.2	15.8	349	23.7	41.0	2.3363	1.63	40.5	
WHCB	10	1	61.0	80.2	0.2	0.0	0.0	0.0	0.8	0.8	7.8	10.0	10.0	10.0	370	27.7	57.3	2.47	1.25	25.0	
WHCB	11	6	56.7	74.7	0.9	0.0	0.0	0.0	4.9	4.9	8.2	12.2	10.8	12.9	313	20.9	40.7	2.25	1.44	30.2	
	Crop Year Average																				
WHCB	2021	66	59.7	78.5	0.5	0.0	0.0	0.1	1.6	1.7	8.0	11.4			345	27.1	38.5	2.42	1.35	25.8	
WHCB	2020	95	61.6	81.0	0.5	0.0	0.0	0.0	0.8	0.9	8.5	9.8			322	32.3	31.4	2.61	1.27	18.0	
HRW	4	5	60.6	79.7	0.9	0.0	0.3	0.0	1.5	1.9	8.1	12.7	11.6	13.8	401	26.5	68.7	2.50	1.34	29.4	
HRW	5	1	60.9	80.1	0.2	0.0	0.0	0.0	0.4	0.4	8.3	12.0	12.0	12.0	390	35.3	69.5	2.89	1.56	27.6	
HRW	6/7	7	60.3	79.3	0.1	0.0	0.0	0.0	1.1	1.1	8.5	13.5	11.0	16.3	452	31.0	72.3	2.66	1.49	32.2	
HRW	8	20	61.0	80.2	0.1	0.0	0.0	0.1	0.8	0.9	8.0	12.7	9.2	14.6	400	30.2	72.7	2.69	1.41	30.3	
HRW	10	5	59.9	78.8	0.2	0.0	0.0	0.0	0.9	1.0	7.8	12.8	11.5	13.9	353	27.5	75.3	2.55	1.29	27.8	
HRW	11	13	57.9	76.2	0.5	0.0	0.0	0.0	1.2	1.2	8.1	13.4	11.8	14.3	371	25.0	74.8	2.48	1.36	29.5	
HRW	12	8	53.7	70.8	0.8	0.0	0.0	0.1	0.7	0.7	9.7	12.5	10.1	13.8	413	27.0	54.9	2.74	1.75	25.1	
HRW	13	2	58.1	76.4	0.2	0.0	0.0	0.1	0.8	0.8	9.7	13.1	13.1	13.1	358	34.9	60.0	2.78	1.52	32.2	
HRW	14	10	58.5	77.0	0.5	0.0	0.0	0.5	0.9	1.4	10.2	13.4	11.4	14.8	371	32.1	65.9	2.71	1.61	32.4	
	Crop Year Average																				
HRW	2021	71	59.0	77.7	0.4	0.0	0.0	0.1	0.9	1.1	8.6	13.0			393	29.0	69.6	2.64	1.47	29.8	
HRW	2020	69	62.9	82.6	0.3	0.0	0.0	0.0	0.4	0.5	9.3	11.4			351	36.7	67.6	2.87	1.40	26.8	
HRS	4	3	60.9	80.1	0.4	0.0	0.0	0.0	0.6	0.6	8.8	15.0	14.3	15.7	436	28.4	74.4	2.65	1.56	34.5	
HRS	5	3	62.1	81.7	0.3	0.0	0.0	0.4	0.8	1.1	8.4	14.8	13.5	16.1	412	28.8	79.5	2.66	1.59	38.1	
HRS	6/7	2	61.1	80.4	0.0	0.0	0.0	0.1	0.7	0.7	7.8	14.4	13.4	15.4	405	31.6	70.1	2.77	1.66	36.8	
HRS	8	15	60.1	79.0	0.5	0.0	0.2	0.0	2.8	3.0	9.0	16.3	13.6	18.4	355	26.1	69.1	2.56	1.72	42.6	
HRS	9	3	59.3	78.1	0.7	0.0	0.0	0.0	0.8	0.8	9.0	17.3	17.0	17.9	364	23.0	69.5	2.51	1.56	44.0	
HRS	10	3	59.5	78.2	0.4	0.0	0.0	0.1	2.9	3.0	8.1	15.6	14.2	17.1	410	20.7	83.0	2.50	1.77	39.1	
HRS	11	5	61.0	80.2	0.4	0.0	0.1	0.0	0.7	0.8	10.1	16.4	16.1	16.8	336	23.7	73.8	2.45	1.55	40.3	
HRS	13	3	60.7	79.9	0.7	0.0	0.0	0.1	0.1	0.2	10.2	15.2	14.7	15.5	422	30.1	68.4	2.65	1.78	35.4	
HRS	14	4	60.3	79.3	0.5	0.0	0.0	0.0	0.4	0.5	11.6	15.6	14.7	17.4	355	31.5	73.7	2.71	1.65	39.9	
	Crop Year Average																				
HRS	2021	41	60.4	79.5	0.5	0.0	0.1	0.1	1.6	1.7	9.3	15.9			375	26.7	72.3	2.59	1.67	40.1	
HRS	2020	65	62.8	82.5	0.5	0.0	0.1	0.0	0.4	0.5	9.2	14.1			380	32.6	72.1	2.78	1.60	35.6	



BY PRODUCTION ZONES

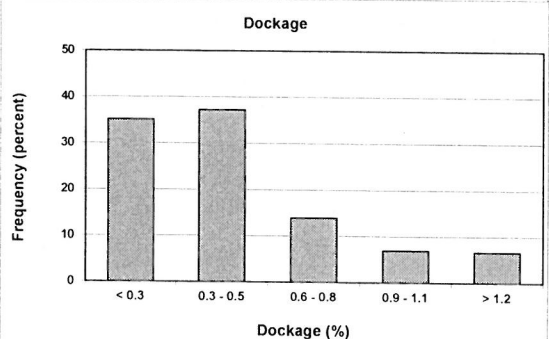
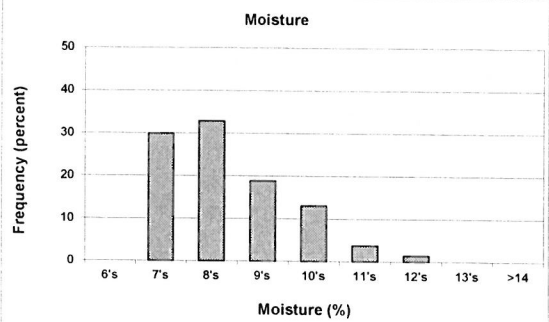
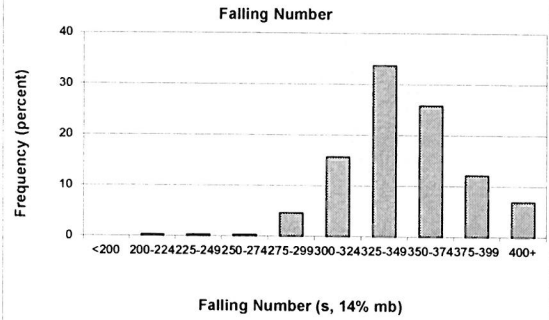
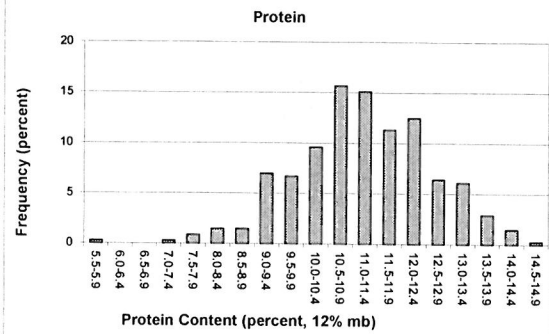
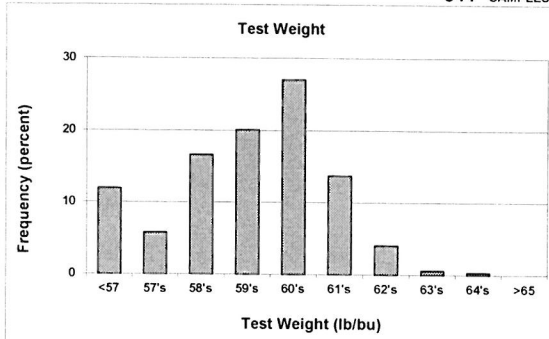
Table 2

2021 CROP WEEK 7: September 2, 2021																					
Class	District	Number of Samples	Grading Data										Quality Data								
			Test Weight (lb/bu)	Test Weight (kg/H)	Dockage (%)	Heat Damage (%)	Total Damage (%)	Foreign Material (%)	Shrunk & Broken (%)	Total Defects (%)	Moisture (%)	Protein (% 12% mb)			Falling Number (s, 14%mb)	Thousand Kernel Weight (g, 14% mb)	Kernel Hardness (-20 to 120)	Kernel Size (mm)	Ash (% 14% mb)	Wet Gluten (% 14% mb)	
			Average	Low	High																
SWH	NW	1	59.2	77.9	0.5	0.0	0.0	0.0	0.0	1.4	1.4	8.7	10.6	10.6	10.6	352	26.1	29.6	2.47	1.49	24.9
SWH	NC	97	59.6	78.4	0.3	0.0	0.0	0.0	0.0	1.0	1.0	7.8	11.6	7.7	13.9	357	28.1	38.9	2.49	1.30	27.7
SWH	NE	53	58.5	77.0	0.6	0.0	0.0	0.0	0.0	1.4	1.4	8.7	11.7	9.4	14.3	347	25.3	35.6	2.43	1.42	27.6
SWH	C	105	59.2	77.9	0.5	0.0	0.1	0.0	0.0	1.0	1.1	8.5	11.2	7.2	15.4	345	27.7	35.3	2.52	1.54	27.5
SWH	SW	21	61.1	80.4	0.6	0.0	0.0	0.0	0.0	1.1	1.2	10.4	9.5	5.5	15.6	339	35.5	34.6	2.74	1.45	20.0
SWH	SE	67	59.3	78.1	0.6	0.0	0.1	0.0	0.0	0.5	0.6	10.1	10.8	9.0	14.1	329	35.1	21.7	2.71	1.65	21.2
		Crop Year Average																			
SWH	2021	344	59.4	78.1	0.5	0.0	0.0	0.0	1.0	1.1	8.8	11.2			344	29.4	33.6	2.55	1.47	25.9	
SWH	2020	389	61.9	81.4	0.5	0.0	0.0	0.0	0.4	0.5	9.2	9.8			323	36.3	32.2	2.77	1.35	29.3	
WHCB	NC	53	60.2	79.1	0.4	0.0	0.0	0.1	1.2	1.3	7.9	11.3	8.9	14.2	351	28.0	39.1	2.44	1.31	24.9	
WHCB	NE	8	57.1	75.2	1.1	0.0	0.0	0.1	4.1	4.1	8.3	13.1	10.8	15.8	321	21.6	40.8	2.27	1.49	32.8	
WHCB	C	5	58.5	77.1	0.5	0.0	0.2	0.1	1.4	1.6	8.5	10.6	7.8	13.4	308	26.5	28.2	2.46	1.54	24.5	
		Crop Year Average																			
WHCB	2021	66	59.7	78.5	0.5	0.0	0.0	0.1	1.6	1.7	8.0	11.4			345	27.1	38.5	2.42	1.35	25.8	
WHCB	2020	95	61.6	81.0	0.5	0.0	0.0	0.0	0.8	0.9	8.5	9.8			322	32.3	31.4	2.61	1.27	18.0	
HRW	NC	27	60.7	79.8	0.1	0.0	0.0	0.1	0.9	1.0	8.0	12.9	9.2	16.3	402	30.2	73.4	2.67	1.42	30.6	
HRW	NE	16	58.6	77.1	0.4	0.0	0.0	0.0	1.1	1.1	8.2	13.1	11.5	14.3	370	25.7	74.3	2.50	1.34	28.9	
HRW	C	8	60.5	79.6	0.6	0.0	0.2	0.0	1.2	1.5	8.1	12.9	11.6	14.8	414	28.1	69.0	2.59	1.39	30.0	
HRW	SE	20	56.6	74.5	0.6	0.0	0.0	0.3	0.8	1.1	10.0	13.0	10.1	14.8	385	30.3	60.9	2.73	1.66	29.5	
		Crop Year Average																			
HRW	2021	71	59.0	77.7	0.4	0.0	0.0	0.1	0.9	1.1	8.6	13.0			393	29.0	69.6	2.64	1.47	29.8	
HRW	2020	69	62.9	82.6	0.3	0.0	0.0	0.0	0.4	0.5	9.3	11.4			351	36.7	67.6	2.87	1.40	26.8	
HRS	NC	18	60.4	79.4	0.4	0.0	0.1	0.0	2.5	2.6	8.9	16.0	13.4	18.4	362	26.6	69.8	2.59	1.70	41.7	
HRS	NE	10	59.8	78.7	0.5	0.0	0.0	0.0	1.4	1.5	9.3	16.6	15.5	17.9	359	22.6	74.5	2.46	1.63	41.3	
HRS	C	6	61.5	80.9	0.4	0.0	0.0	0.2	0.7	0.9	8.6	14.9	13.5	16.1	424	28.6	77.0	2.66	1.57	36.3	
HRS	SE	7	60.5	79.5	0.6	0.0	0.0	0.0	0.3	0.3	11.0	15.4	14.7	17.4	380	30.9	71.5	2.69	1.71	38.0	
		Crop Year Average																			
HRS	2021	41	60.4	79.5	0.5	0.0	0.1	0.1	1.6	1.7	9.3	15.9			375	26.7	72.3	2.59	1.67	40.1	
HRS	2020	65	62.8	82.5	0.5	0.0	0.1	0.0	0.4	0.5	9.2	14.1			380	32.6	72.1	2.78	1.60	35.6	

Distributions

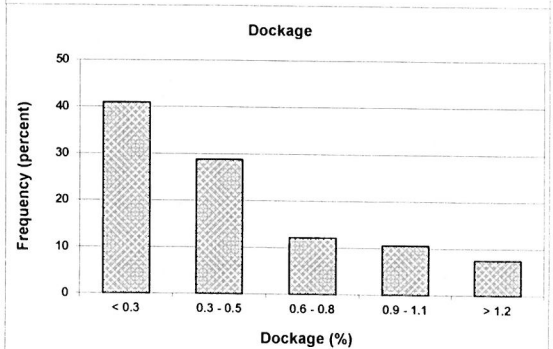
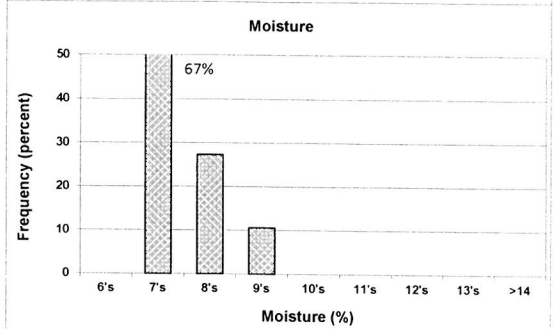
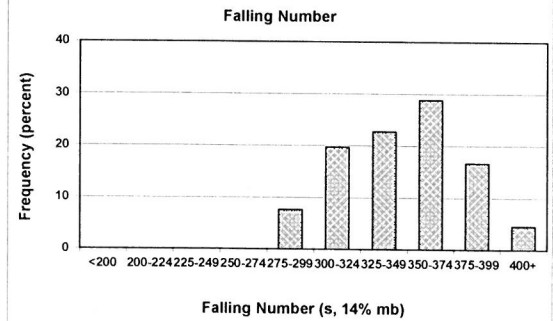
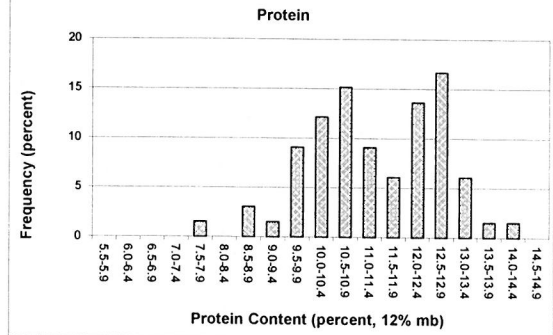
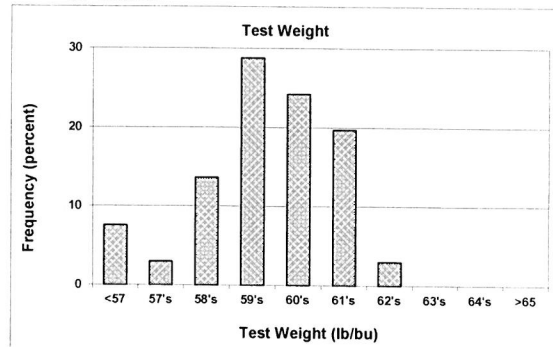
SOFT WHITE WHEAT

344 SAMPLES



WHITE CLUB WHEAT

66 SAMPLES



Prepared by: Wheat Marketing Center, Portland, Oregon