



2023 PACIFIC NORTHWEST CROP QUALITY REPORT

WEEK 5: August 24, 2023

We received and processed a total of 395 samples by the end of the fifth week reporting period for the 2023 Pacific Northwest wheat harvest.

SAMPLE DISTRIBUTION –

174 wheat samples were received in the fifth week – 113 soft white (SWH), 37 white club (WHCB), 18 hard red winter (HRW), and 6 hard red spring (HRS). 122 samples (70%) were from District 8, and less than 10% each were from District 10, District 5, District 4, District 14, Districts 6\7 and District 12. (Please refer to page 2 - USDA Economic Statistics Districts Map.)

USDA ECONOMIC STATISTICS DISTRICTS (TABLE 1) DATA –

SWH – Average **test weight** was 60.2 lb/bu (79.2 kg/hl), similar to the last week and lower than the 5-year average of 61.1 lb/bu (80.3 kg/hl). Average **dockage** was 0.4%. Average **wheat moisture** content was 8.9%, slightly lower than the 5-year average of 9.1%. Average **wheat protein** content (12% mb) was 11.1%, the same as last week and higher than the 5-year average of 10.0%. Average **falling number** value (14% mb) was 336 seconds, higher than the 5-year average of 326 seconds. Average **thousand kernel weight** (14% mb) was 31.7 g, similar to the last week and lower than the 5-year average of 34.4 g. Average **kernel size** was 2.59 mm, smaller than the 5-year average of 2.72 mm.

WHCB – Average **test weight** was 60.7 lb/bu (79.9 kg/hl), the same as the 5-year average. Average **wheat protein** content (12% mb) was 10.6%, an increase of 0.6% compared to the last week and higher than the 5-year average of 10.0%. Average **falling number** value (14% mb) was 324 seconds, lower than the 5-year average of 331 seconds. Average **thousand kernel weight** (14% mb) was 30.2 g, lower than the 5-year average of 30.7 g. Average **kernel size** was 2.48 mm, smaller than the 5-year average of 2.55 mm.

HRW – Average **test weight** was 61.9 lb/bu, the same as last week and similar to the 5-year average of 61.8 lb/bu. Average **wheat protein** content (12% mb) was 11.7%, the same as last week and similar to the 5-year average of 11.6%. **Thousand kernel weight** (14% mb) was 34.9 g, an increase of 1.4 g compared to the last week and slightly higher than the 5-year average of 34.5 g. **Kernel size** was 2.78 mm, slightly smaller than the 5-year average of 2.82 mm.

HRS – Average **test weight** was 62.1 lb/bu, similar to the 5-year average of 62.0 lb/bu. Average **wheat protein** content (12% mb) was 14.7%, similar to the 5-year average of 14.6%. **Thousand kernel weight** (14% mb) and **kernel size** were higher than the 5-year averages.

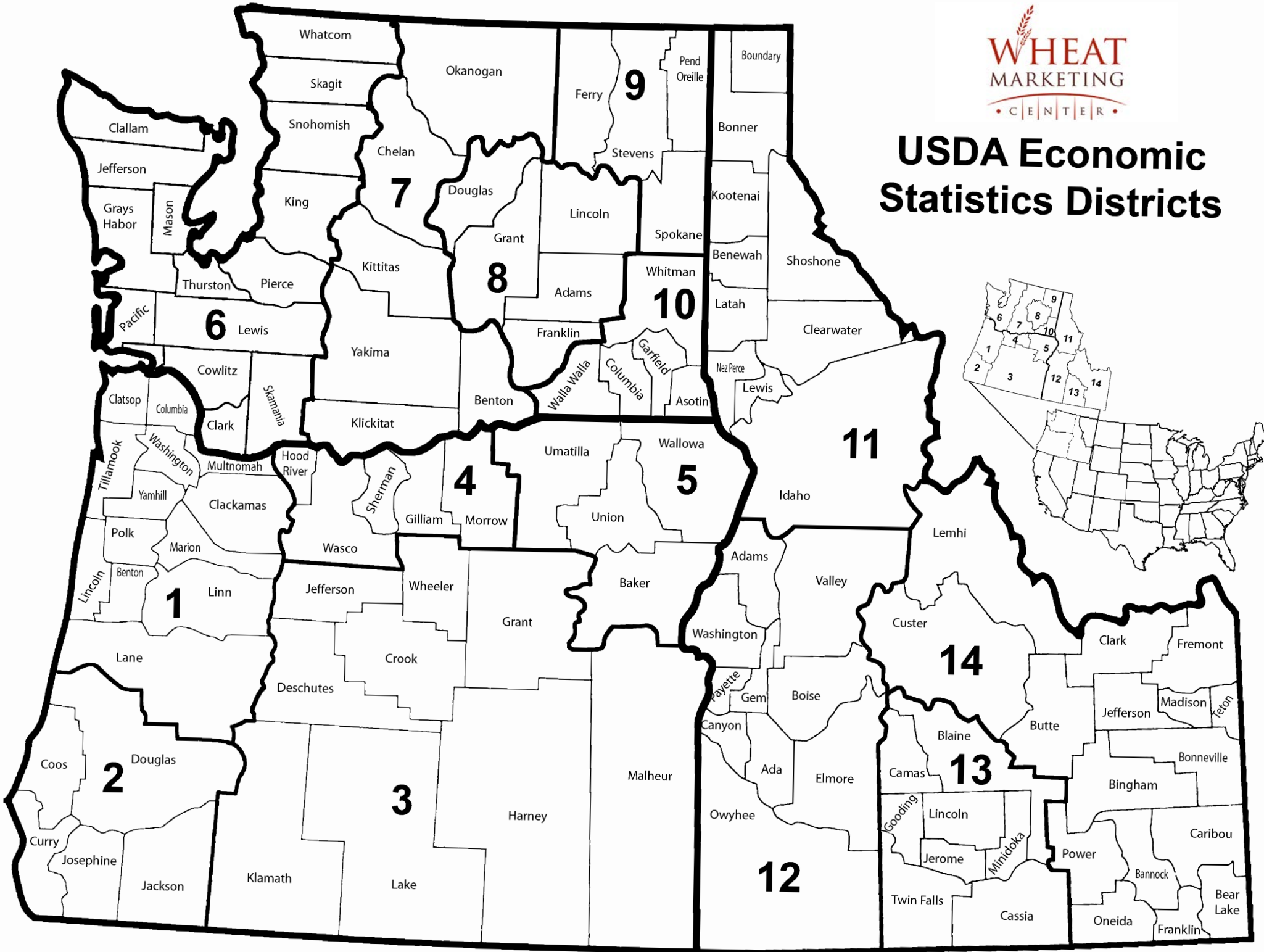
PACIFIC NORTHWEST WHEAT PRODUCTION ZONES (TABLE 2) DATA –

Seventy one percent of this week's samples were from Zone NC, 14% were from Zone C, 8% were from Zone NE, and 7% were from Zone SE. (Please refer to page 4 – Pacific Northwest Wheat Production Zones Map.)

SWH – Average **wheat protein content (12% mb)** was highest for Zone C at 12.0% followed by Zone NE at 11.4%, Zone NC at 10.8%, Zone SE at 9.8% and the lowest was for Zone SW at 8.6%.

WHCB – Average **wheat protein content (12% mb)** for Zone NC and Zone C were at 10.7% and 10.3% respectively.

USDA Economic Statistics Districts





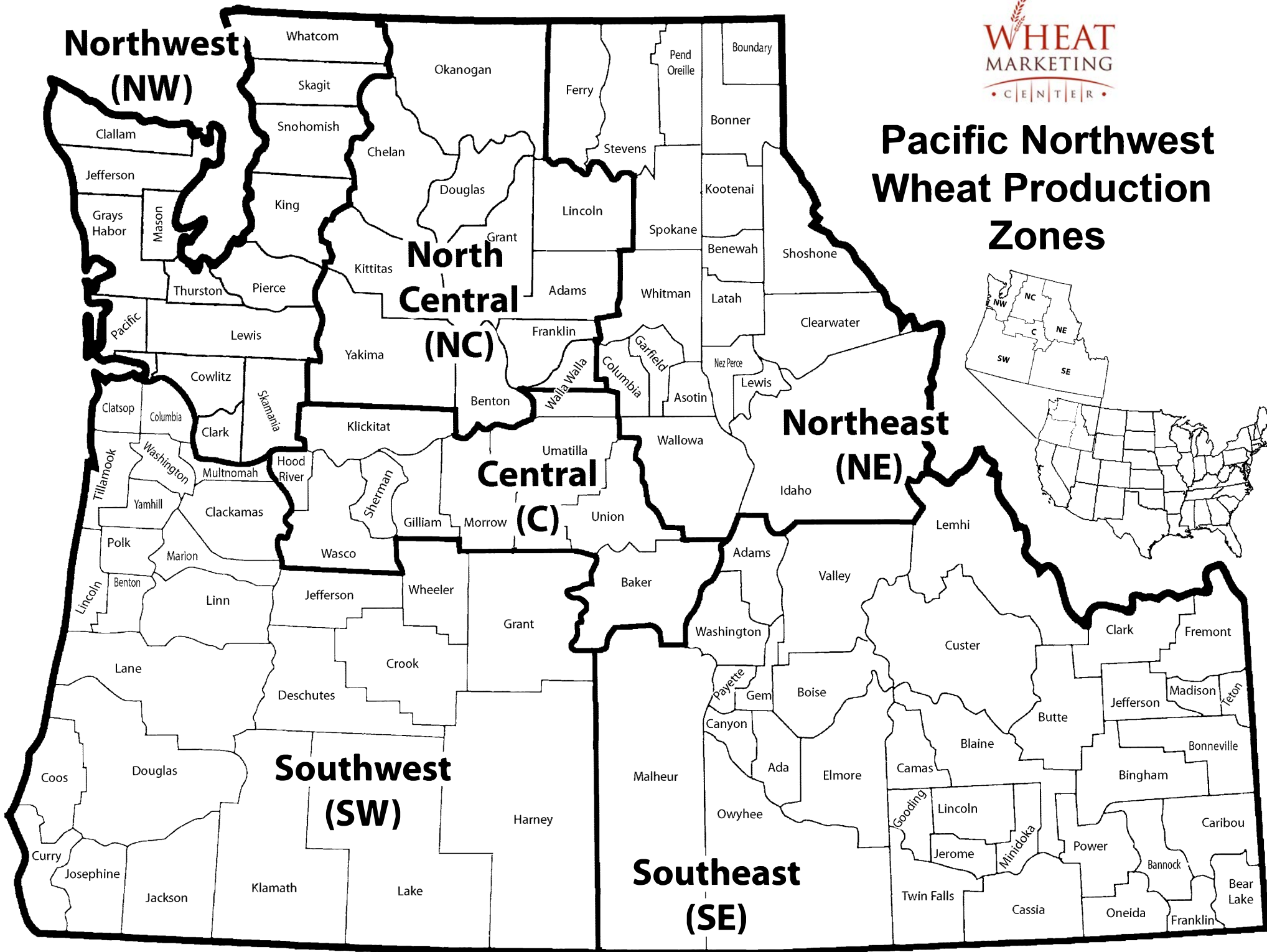
BY USDA ECONOMIC STATISTICS DISTRICTS

Table 1

2023 CROP WEEK 5: August 24, 2023																				
		Grading Data										Quality Data								
Class	District	Number of Samples	Test Weight (lb/bu)	Test Weight (kg/hl)	Dockage (%)	Heat Damage (%)	Total Damage (%)	Foreign Material (%)	Shrunk & Broken (%)	Total Defects (%)	Moisture (%)	Protein (% 12% mb)			Falling Number (s, 14%mb)	Thousand Kernel Weight (g, 14% mb)	Kernel Hardness (-20 to 120)	Kernel Size (mm)	Ash (% 14% mb)	Wet Gluten (% 14% mb)
												Average	Low	High						
SWH	112	10	61.3	80.7	0.3	0.0	0.0	0.0	0.9	0.9	10.4	8.6	8.0	10.0	333	38.2	24.4	2.79	1.36	16.4
SWH	3	10	61.6	81.0	0.5	0.0	0.5	0.0	0.4	0.9	8.7	10.1	9.1	10.9	283	41.3	26.1	2.90	1.62	21.5
SWH	4	52	59.3	78.1	0.3	0.0	0.0	0.1	0.9	1.0	8.7	12.2	10.6	15.5	343	28.0	22.3	2.49	1.39	30.7
SWH	5	42	59.8	78.7	0.2	0.0	0.0	0.0	1.0	1.0	8.7	11.8	10.2	14.7	340	29.8	21.7	2.54	1.44	29.5
SWH	6/7	9	60.0	79.0	0.8	0.0	0.0	0.0	0.4	0.4	9.4	11.2	9.6	12.7	333	35.7	25.2	2.76	1.54	28.1
SWH	8	97	60.3	79.3	0.5	0.0	0.0	0.1	0.8	0.8	8.7	10.8	7.3	14.8	335	31.7	21.3	2.58	1.26	25.9
SWH	10	19	59.6	78.5	0.4	0.0	0.0	0.0	0.8	0.8	8.3	12.3	9.5	15.1	356	29.5	19.8	2.52	1.35	29.9
SWH	11	28	61.6	81.1	0.3	0.0	0.0	0.0	0.8	0.7	8.9	10.7	8.8	14.0	340	32.4	23.9	2.62	1.40	23.2
SWH	12	6	61.5	80.8	0.5	0.0	0.1	0.0	0.3	0.4	9.2	9.7	8.7	10.7	290	43.5	20.6	2.91	1.55	21.6
SWH	14	12	60.1	79.1	0.0	0.0	0.0	0.9	0.6	1.5	11.4	9.5	8.0	11.9	339	34.9	17.9	2.68	1.63	18.2
	Crop Year Average																			
SWH	2023	285	60.2	79.2	0.4	0.0	0.0	0.1	0.8	0.9	8.9	11.1			336	31.7	21.9	2.59	1.37	26.5
SWH	2022	404	61.0	80.2	0.5	0.0	0.0	0.1	0.5	0.6	8.9	9.5			340	34.8	28.0	2.74	1.47	20.1
SWH	5-year average	416	61.1	80.3	0.5	0.0	0.0	0.0	0.6	0.7	9.1	10.0			326	34.4	28.7	2.72	1.40	22.8
WHCB	4	1	61.3	80.6	0.5	0.0	0.2	0.1	1.6	1.9	8.8	10.6	10.6	10.6	375	32.4	22.2	2.59	1.38	
WHCB	5	5	61.1	80.4	0.3	0.0	0.1	0.0	1.3	1.3	8.5	10.3	8.6	11.0	309	28.6	21.7	2.42	1.27	
WHCB	8	47	60.7	79.8	0.6	0.0	0.0	0.0	1.2	1.2	8.3	10.7	8.4	13.6	324	30.3	21.7	2.48	1.24	
	Crop Year Average																			
WHCB	2023	53	60.7	79.9	0.6	0.0	0.0	0.0	1.2	1.2	8.4	10.6			324	30.2	21.7	2.48	1.25	
WHCB	2022	53	60.6	79.8	0.8	0.0	0.0	0.0	1.1	1.1	7.8	10.1			356	30.2	31.1	2.55	1.36	
WHCB	5-year average	91	60.7	79.9	0.6	0.0	0.0	0.1	1.1	1.2	8.3	10.0			331	30.7	30.0	2.55	1.31	
HRW	4	7	62.0	81.6	0.3	0.0	0.0	0.1	0.9	1.0	8.4	12.8	11.7	14.8	350	31.9	63.0	2.69	1.47	31.1
HRW	5	6	60.3	79.3	0.5	0.0	0.6	0.0	1.2	1.8	9.4	12.4	11.7	13.6	358	32.9	70.3	2.73	1.47	26.4
HRW	8	14	62.2	81.8	0.3	0.0	0.0	0.0	0.4	0.4	8.5	12.0	10.7	14.0	379	37.6	61.4	2.88	1.37	26.7
HRW	11	8	62.1	81.7	0.2	0.0	0.0	0.0	0.4	0.4	8.1	11.4	10.6	12.1	344	35.3	66.3	2.85	1.24	23.8
HRW	12	2	62.8	82.5	0.3	0.0	0.0	0.0	0.4	0.4	8.9	10.4	10.2	10.5	339	40.4	62.1	3.00	1.49	18.9
HRW	14	5	61.9	81.4	0.3	0.0	0.0	0.0	1.4	1.5	9.7	9.2	8.2	11.4	360	31.2	57.3	2.49	1.63	16.8
	Crop Year Average																			
HRW	2023	42	61.9	81.3	0.3	0.0	0.1	0.0	0.7	0.8	8.7	11.7			360	34.9	63.4	2.78	1.41	25.3
HRW	2022	78	61.5	80.9	0.4	0.0	0.0	0.0	0.8	0.8	8.8	11.1			382	33.7	66.2	2.80	1.53	24.1
HRW	5-year average	87	61.8	81.2	0.3	0.0	0.0	0.0	0.6	0.7	8.9	11.6			367	34.5	66.5	2.82	1.42	26.3
HRS	4	4	61.4	80.7	0.9	0.0	0.0	0.1	0.9	1.0	9.0	14.8	14.2	15.2	398	32.6	70.8	2.82	1.62	35.7
HRS	5	4	63.7	83.7	0.1	0.0	0.0	0.1	0.5	0.5	9.1	14.1	13.4	14.9	335	36.0	60.7	2.88	1.56	36.0
HRS	8	4	60.9	80.1	0.6	0.0	0.0	0.1	0.6	0.6	8.8	15.2	13.9	16.9	388	32.1	64.4	2.71	1.62	40.1
HRS	11	3	62.7	82.4	0.5	0.0	0.0	0.0	0.5	0.6	7.7	14.7	14.1	15.4	407	28.2	78.5	2.60	1.36	36.9
	Crop Year Average																			
HRS	2023	15	62.1	81.7	0.5	0.0	0.0	0.1	0.6	0.7	8.7	14.7			380	32.5	68.0	2.76	1.55	37.2
HRS	2022	56	61.6	81.0	0.4	0.0	0.0	0.0	0.6	0.7	8.7	14.4			387	30.5	72.2	2.71	1.65	35.1
HRS	5-year average	64	62.0	81.6	0.4	0.0	0.1	0.0	0.8	0.9	9.1	14.6			379	30.8	71.6	2.72	1.61	36.4

* Wet gluten has been discontinued for club wheat

Pacific Northwest Wheat Production Zones





BY PRODUCTION ZONES

Table 2

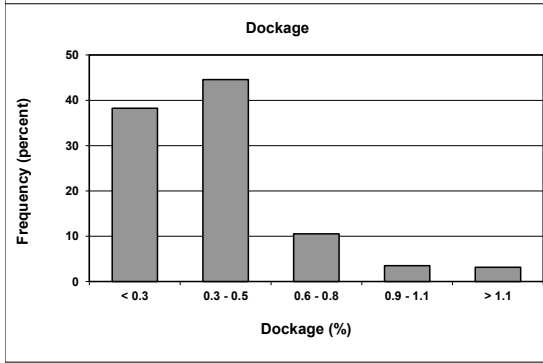
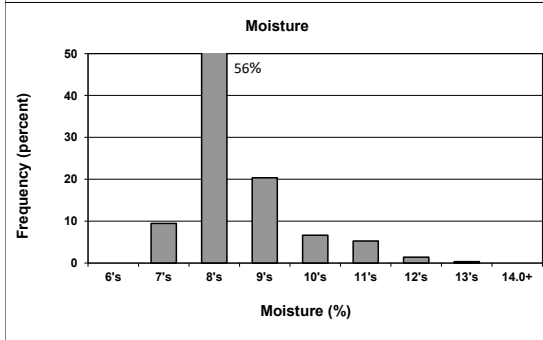
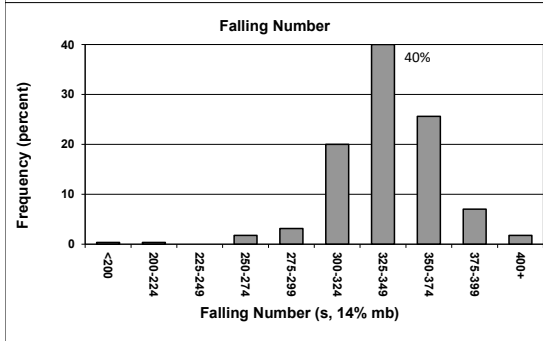
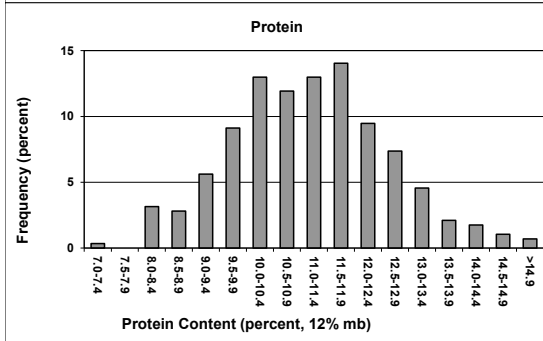
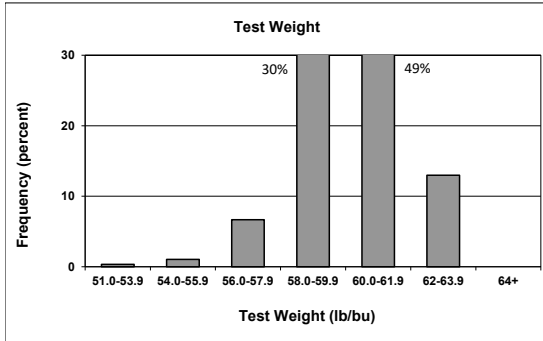
2023 CROP WEEK 5: August 24, 2023																				
		Grading Data									Quality Data									
Class	District	Number of Samples	Test Weight (lb/bu)	Test Weight (kg/hl)	Dockage (%)	Heat Damage (%)	Total Damage (%)	Foreign Material (%)	Shrunk & Broken (%)	Total Defects (%)	Moisture (%)	Protein (% 12% mb)			Falling Number (s, 14% mb)	Thousand Kernel Weight (g, 14% mb)	Kernel Hardness (-20 to 120)	Kernel Size (mm)	Ash (% 14% mb)	Wet Gluten (% 14% mb)
												Average	Low	High						
SWH	NC	103	60.3	79.3	0.5	0.0	0.0	0.1	0.8	0.8	8.8	10.8	7.3	14.8	339	32.1	21.5	2.59	1.28	25.9
SWH	NE	47	60.8	80.0	0.3	0.0	0.0	0.0	0.8	0.8	8.6	11.4	8.8	15.1	346	31.2	22.2	2.58	1.38	25.9
SWH	C	97	59.6	78.4	0.3	0.0	0.0	0.1	0.9	1.0	8.7	12.0	10.2	15.5	341	28.8	22.1	2.51	1.41	30.3
SWH	SW	10	61.3	80.7	0.3	0.0	0.0	0.0	0.9	0.9	10.4	8.6	8.0	10.0	333	38.2	24.4	2.79	1.36	16.4
SWH	SE	28	60.9	80.2	0.3	0.0	0.2	0.4	0.4	1.0	10.0	9.8	8.0	11.9	305	39.0	21.4	2.81	1.61	20.1
	Crop Year Average																			
SWH	2023	285	60.2	79.2	0.4	0.0	0.0	0.1	0.8	0.9	8.9	11.1			336	31.7	21.9	2.59	1.37	26.5
SWH	2022	404	61.0	80.2	0.5	0.0	0.0	0.1	0.5	0.6	8.9	9.5			340	34.8	28.0	2.74	1.47	20.1
SWH	5-year average	416	61.1	80.3	0.5	0.0	0.0	0.0	0.6	0.7	9.1	10.0			326	34.4	28.7	2.72	1.40	22.8
WHCB	NC	47	60.7	79.8	0.6	0.0	0.0	0.0	1.2	1.2	8.3	10.7	8.4	13.6	324	30.3	21.7	2.48	1.24	
WHCB	C	6	61.1	80.4	0.3	0.0	0.1	0.0	1.3	1.4	8.6	10.3	8.6	11.0	318	29.3	21.8	2.45	1.29	
	Crop Year Average																			
WHCB	2023	53	60.7	79.9	0.6	0.0	0.0	0.0	1.2	1.2	8.4	10.6			324	30.2	21.7	2.48	1.25	
WHCB	2022	53	60.6	79.8	0.8	0.0	0.0	0.0	1.1	1.1	7.8	10.1			356	30.2	31.1	2.55	1.36	
WHCB	5-year average	91	60.7	79.9	0.6	0.0	0.0	0.1	1.1	1.2	8.3	10.0			331	30.7	30.0	2.55	1.31	
HRW	NC	14	62.2	81.8	0.3	0.0	0.0	0.0	0.4	0.4	8.5	12.0	10.7	14.0	379	37.6	61.4	2.88	1.37	26.7
HRW	NE	8	62.1	81.7	0.2	0.0	0.0	0.0	0.4	0.4	8.1	11.4	10.6	12.1	344	35.3	66.3	2.85	1.24	23.8
HRW	C	13	61.2	80.5	0.4	0.0	0.3	0.1	1.1	1.4	8.9	12.6	11.7	14.8	354	32.3	66.4	2.71	1.47	28.9
HRW	SE	7	62.1	81.7	0.3	0.0	0.0	0.0	1.1	1.2	9.5	9.6	8.2	11.4	354	33.8	58.6	2.63	1.59	17.4
	Crop Year Average																			
HRW	2023	42	61.9	81.3	0.3	0.0	0.1	0.0	0.7	0.8	8.7	11.7			360	34.9	63.4	2.78	1.41	25.3
HRW	2022	78	61.5	80.9	0.4	0.0	0.0	0.0	0.8	0.8	8.8	11.1			382	33.7	66.2	2.80	1.53	24.1
HRW	5-year average	87	61.8	81.2	0.3	0.0	0.0	0.0	0.6	0.7	8.9	11.6			367	34.5	66.5	2.82	1.42	26.3
HRS	NC	4	60.9	80.1	0.6	0.0	0.0	0.1	0.6	0.6	8.8	15.2	13.9	16.9	388	32.1	64.4	2.71	1.62	40.1
HRS	NE	3	62.7	82.4	0.5	0.0	0.0	0.0	0.5	0.6	7.7	14.7	14.1	15.4	407	28.2	78.5	2.60	1.36	36.9
HRS	C	8	62.5	82.2	0.5	0.0	0.0	0.1	0.7	0.8	9.1	14.4	13.4	15.2	363	34.3	65.8	2.85	1.59	35.8
	Crop Year Average																			
HRS	2023	15	62.1	81.7	0.5	0.0	0.0	0.1	0.6	0.7	8.7	14.7			380	32.5	68.0	2.76	1.55	37.2
HRS	2022	56	61.6	81.0	0.4	0.0	0.0	0.0	0.6	0.7	8.7	14.4			387	30.5	72.2	2.71	1.65	35.1
HRS	5-year average	64	62.0	81.6	0.4	0.0	0.1	0.0	0.8	0.9	9.1	14.6			379	30.8	71.6	2.72	1.61	36.4

* Wet gluten has been discontinued for club wheat

Distributions

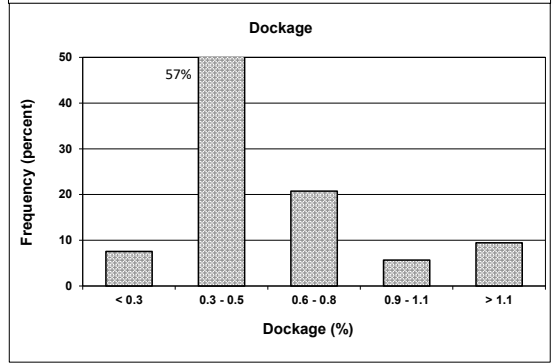
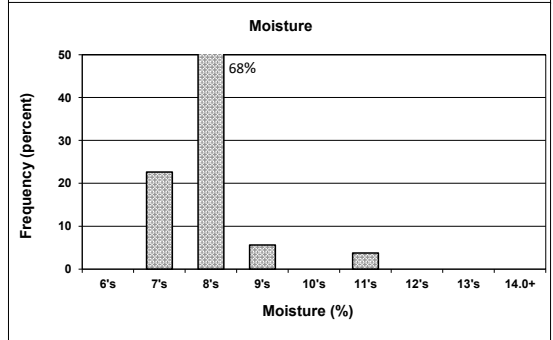
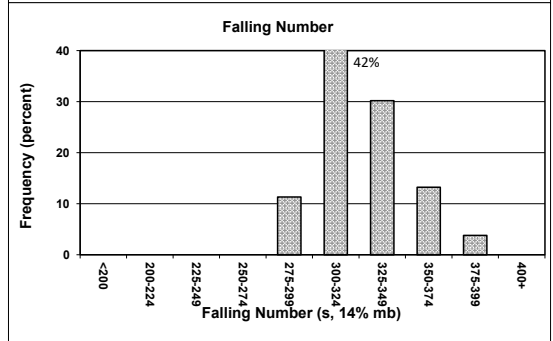
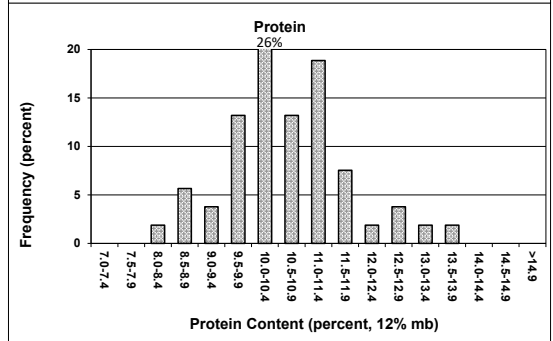
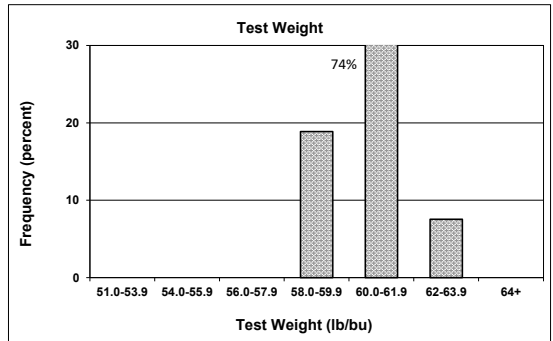
SOFT WHITE WHEAT

285 SAMPLES



WHITE CLUB WHEAT

53 SAMPLES



Prepared by: Wheat Marketing Center, Portland, Oregon