



2023 PACIFIC NORTHWEST CROP QUALITY REPORT

WEEK 3: August 10, 2023

We received and processed a total of 153 samples by the end of the third week reporting period for the 2023 Pacific Northwest wheat harvest.

SAMPLE DISTRIBUTION –

93 wheat samples were received in the third week – 69 soft white (SWH), 9 white club (WHCB), 11 hard red winter (HRW), and 4 hard red spring (HRS). 29 samples (31%) were from District 11, 24 (26%) were from District 8, 11 samples (12%) were from District 4, and less than 10% each were from District 14, District 12, District 10, and District 3. (Please refer to page 2 - USDA Economic Statistics Districts Map.)

USDA ECONOMIC STATISTICS DISTRICTS (TABLE 1) DATA –

SWH – Average **test weight** was 60.1 lb/bu (79.1 kg/hl), lower than the 5-year average of 61.1 lb/bu (80.3 kg/hl). Average **dockage** was 0.3%. Average **wheat moisture** content was 8.8%, lower than the 5-year average of 9.1%. Average **wheat protein** content (12% mb) was 11.4%, a decline of 0.5% compared to the last week but still higher than the 5-year average of 10.0%. Average **falling number** value (14% mb) was 333 seconds, higher than the 5-year average of 326 seconds. Average **thousand kernel weight** (14% mb) was 30.7 g, lower than the 5-year average of 34.4 g. Average **kernel size** was 2.56 mm, smaller than the 5-year average of 2.72 mm.

WHCB – Average **test weight** was 60.7 lb/bu (79.9 kg/hl), the same as the 5-year average. Average **wheat protein** content (12% mb) was 10.1%, similar to the 5-year average of 10.0%. Average **falling number** value (14% mb) was 318 seconds, lower than the 5-year average of 331 seconds. Average **thousand kernel weight** (14% mb) was 29.0 g, lower than the 5-year average of 30.7 g. Average **kernel size** was 2.45 mm, smaller than the 5-year average of 2.55 mm.

HRW – Average **test weight** was 62.0 lb/bu, slightly higher than the 5-year average of 61.8 lb/bu. Average **wheat protein** content (12% mb) was 11.1%, lower than the 5-year average of 11.7%. **Thousand kernel weight** (14% mb) and **kernel size** were lower than the 5-year averages.

HRS – Average **test weight** was 63.2 lb/bu, higher than the 5-year average of 62.0 lb/bu. Average **wheat protein** content (12% mb) was 14.5%, similar to the 5-year average of 14.6%. **Thousand kernel weight** (14% mb) and **kernel size** were higher than the 5-year averages.

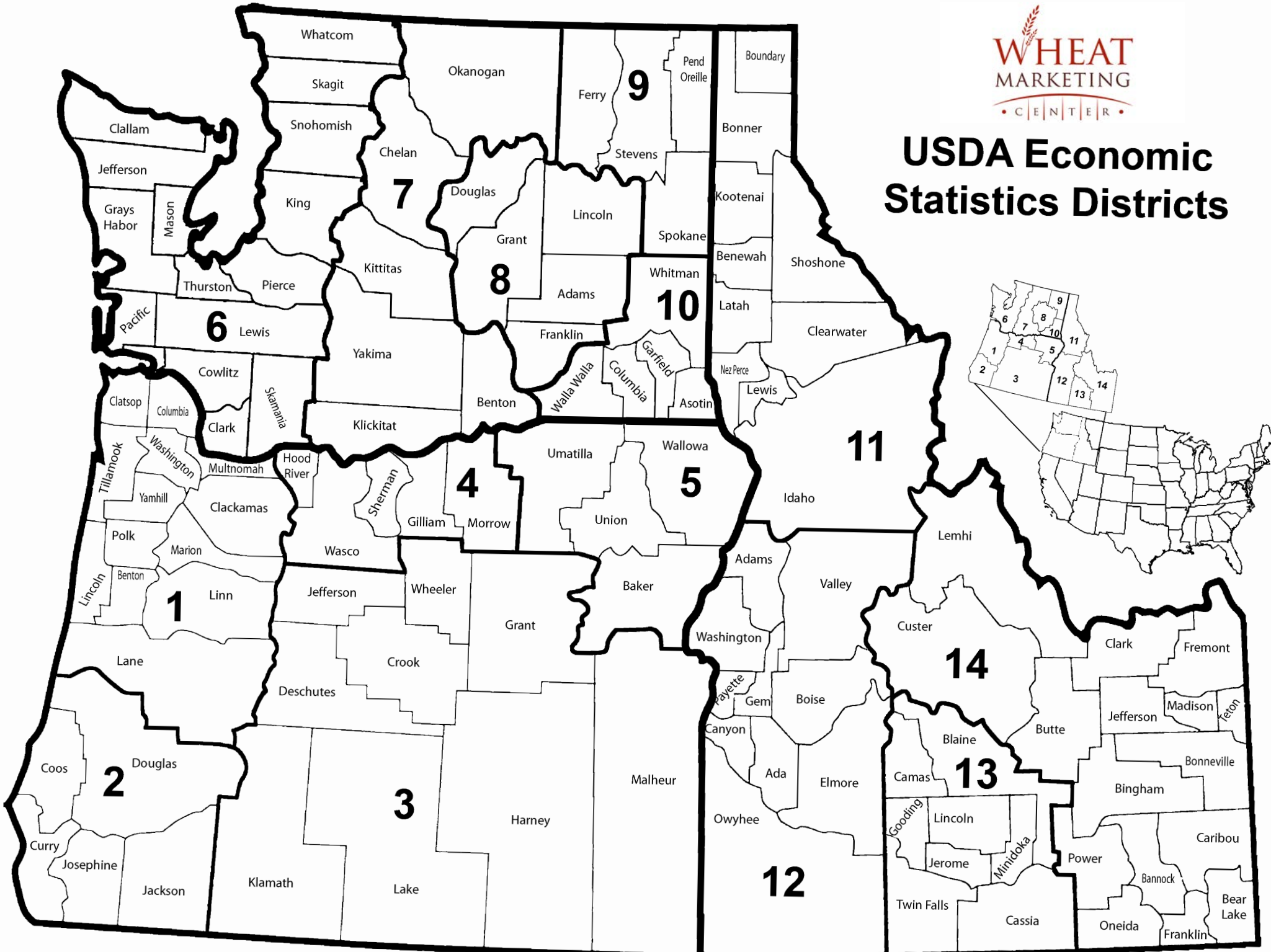
PACIFIC NORTHWEST WHEAT PRODUCTION ZONES (TABLE 2) DATA –

Thirty seven percent of this week's samples were from Zone NE, 26% were from Zone NC, 22% were from Zone C and 16% were from Zone SE. (Please refer to page 4 – Pacific Northwest Wheat Production Zones Map.)

SWH – Average **wheat protein** content (12% mb) was highest for Zone C at 12.1% followed by Zone NE at 11.1%, Zone NC at 10.7%, Zone SE at 9.6% and the lowest was for Zone SW at 9.0%.

WHCB – Average **wheat protein** content (12% mb) for Zone NC and Zone C were at 9.7% and 10.7% respectively.

USDA Economic Statistics Districts





BY USDA ECONOMIC STATISTICS DISTRICTS

Table 1

2023 CROP WEEK 3: August 10, 2023																				
		Grading Data										Quality Data								
Class	District	Number of Samples	Test Weight (lbbu)	Test Weight (kg/hl)	Dockage (%)	Heat Damage (%)	Total Damage (%)	Foreign Material (%)	Shrunk & Broken (%)	Total Defects (%)	Moisture (%)	Protein (% 12% mb)			Falling Number (s, 14%mb)	Thousand Kernel Weight (g, 14% mb)	Kernel Hardness (-20 to 120)	Kernel Size (mm)	Ash (% 14% mb)	Wet Gluten (% 14% mb)
												Average	Low	High						
SWH	112	1	62.9	82.7	0.2	0.0	0.0	0.0	1.0	1.0	10.0	9.0	9.0	9.0	349	35.4	27.8	2.67	1.42	16.4
SWH	3	2	61.2	80.5	0.5	0.0	1.9	0.0	0.3	2.1	8.6	9.8	9.1	10.4	192	44.1	20.6	3.04	1.65	22.7
SWH	4	35	59.4	78.1	0.4	0.0	0.0	0.1	1.0	1.1	8.7	12.3	10.6	15.5	341	27.6	22.5	2.48	1.40	31.4
SWH	5	26	59.7	78.6	0.2	0.0	0.0	0.0	1.0	1.0	8.7	11.8	10.2	14.7	335	29.2	22.1	2.52	1.45	29.7
SWH	6/7	4	59.3	78.0	1.2	0.0	0.0	0.1	0.4	0.5	9.8	10.9	9.6	12.7	335	35.5	24.3	2.75	1.59	26.7
SWH	8	14	59.8	78.7	0.4	0.0	0.0	0.0	1.0	1.0	8.2	10.8	8.8	12.7	329	30.1	24.5	2.52	1.25	25.2
SWH	10	5	60.4	79.5	0.3	0.0	0.0	0.0	0.7	0.7	8.5	11.2	9.5	12.8	341	31.9	15.3	2.61	1.38	23.3
SWH	11	21	61.4	80.8	0.3	0.0	0.0	0.0	0.9	0.8	9.0	11.1	8.8	14.0	341	31.3	24.8	2.58	1.40	23.6
SWH	12	6	61.5	80.8	0.5	0.0	0.1	0.0	0.3	0.4	9.2	9.7	8.7	10.7	290	43.5	20.6	2.91	1.55	21.6
SWH	14	4	60.9	80.1	0.0	0.0	0.0	2.5	0.8	3.4	10.6	9.3	8.0	10.7	338	34.6	24.4	2.68	1.65	15.3
	Crop Year Average																			
SWH	2023	118	60.1	79.1	0.3	0.0	0.0	0.1	0.9	1.0	8.8	11.4			333	30.7	22.8	2.56	1.42	27.1
SWH	2022	404	61.0	80.2	0.5	0.0	0.0	0.1	0.5	0.6	8.9	9.5			340	34.8	28.0	2.74	1.47	20.1
SWH	5-year average	416	61.1	80.3	0.5	0.0	0.0	0.0	0.6	0.7	9.1	10.0			326	34.4	28.7	2.72	1.40	22.8
WHCB	5	4	61.3	80.7	0.3	0.0	0.0	0.0	1.3	1.3	8.5	10.7	10.2	11.0	309	28.3	22.5	2.39	1.25	
WHCB	8	8	60.4	79.5	0.8	0.0	0.0	0.0	1.1	1.2	8.1	9.7	8.4	11.4	323	29.3	21.8	2.48	1.25	
	Crop Year Average																			
WHCB	2023	12	60.7	79.9	0.6	0.0	0.0	0.0	1.2	1.2	8.2	10.1			318	29.0	22.0	2.45	1.25	
WHCB	2022	53	60.6	79.8	0.8	0.0	0.0	0.0	1.1	1.1	7.8	10.1			356	30.2	31.1	2.55	1.36	
WHCB	5-year average	91	60.7	79.9	0.6	0.0	0.0	0.1	1.1	1.2	8.3	10.0			331	30.7	30.0	2.55	1.31	
HRW	4	5	62.1	81.7	0.3	0.0	0.0	0.0	0.7	0.7	8.5	13.1	12.3	14.8	338	32.5	58.9	2.68	1.46	32.0
HRW	5	2	62.4	82.0	0.1	0.0	0.0	0.0	1.7	1.7	8.6	11.8	11.7	11.9	335	30.7	71.3	2.64	1.31	25.4
HRW	8	2	60.8	80.0	0.3	0.0	0.0	0.0	0.6	0.6	8.2	12.1	11.5	12.7	371	35.1	62.7	2.75	1.34	28.5
HRW	11	5	62.3	81.9	0.1	0.0	0.0	0.0	0.4	0.4	8.2	11.3	10.6	11.8	338	35.6	66.2	2.86	1.21	23.0
HRW	14	3	61.8	81.3	0.3	0.0	0.0	0.0	1.2	1.3	9.9	8.7	8.2	9.1	349	32.6	55.0	2.52	1.57	17.9
	Crop Year Average																			
HRW	2023	17	62.0	81.5	0.2	0.0	0.0	0.0	0.8	0.8	8.6	11.5			344	33.5	62.3	2.71	1.37	25.7
HRW	2022	78	61.5	80.9	0.4	0.0	0.0	0.0	0.8	0.8	8.8	11.1			382	33.7	66.2	2.80	1.53	24.1
HRW	5-year average	87	61.8	81.2	0.3	0.0	0.0	0.0	0.6	0.7	8.9	11.6			367	34.5	66.5	2.82	1.42	26.3
HRS	4	1	63.3	83.2	2.4	0.0	0.0	0.1	0.3	0.4	9.6	15.2	15.2	15.2	402	30.4	64.2	2.75	1.57	35.1
HRS	5	2	64.0	84.0	0.1	0.0	0.0	0.0	0.3	0.3	8.9	14.0	13.8	14.1	300	37.3	55.1	2.93	1.47	35.7
HRS	11	3	62.7	82.4	0.5	0.0	0.0	0.0	0.5	0.6	7.7	14.7	14.1	15.4	407	28.2	78.5	2.60	1.36	36.9
	Crop Year Average																			
HRS	2023	6	63.2	83.1	0.7	0.0	0.0	0.0	0.4	0.4	8.4	14.5			370	31.6	68.3	2.74	1.43	36.2
HRS	2022	56	61.6	81.0	0.4	0.0	0.0	0.0	0.6	0.7	8.7	14.4			387	30.5	72.2	2.71	1.65	35.1
HRS	5-year average	64	62.0	81.6	0.4	0.0	0.1	0.0	0.8	0.9	9.1	14.6			379	30.8	71.6	2.72	1.61	36.4

* Wet gluten has been discontinued for club wheat



BY PRODUCTION ZONES

Table 2

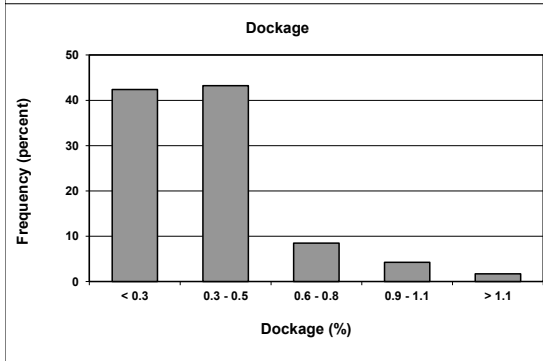
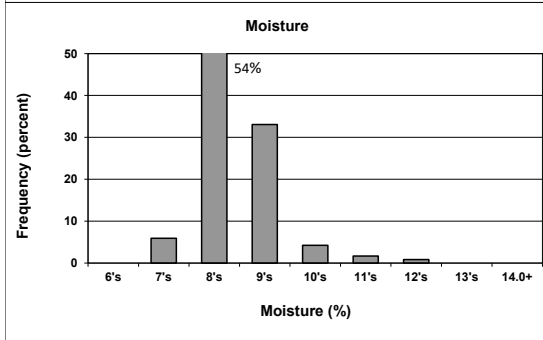
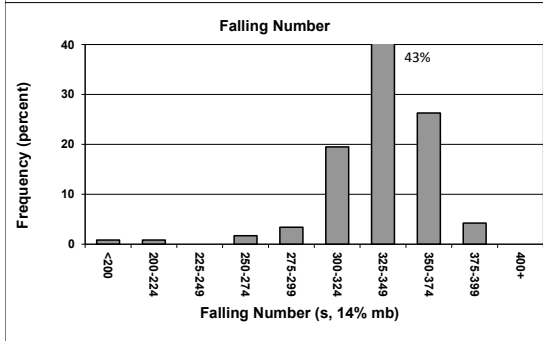
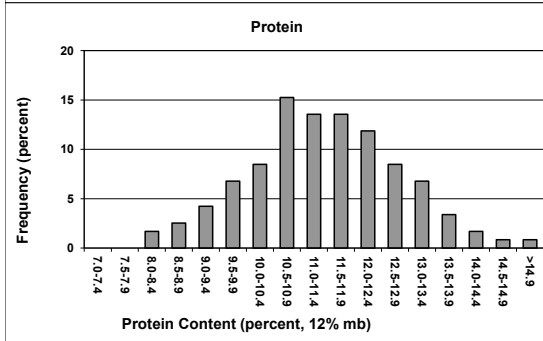
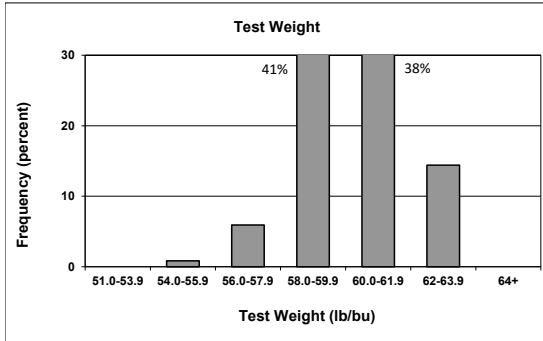
2023 CROP WEEK 3: August 10, 2023																				
Grading Data											Quality Data									
Class	District	Number of Samples	Test Weight (lb/bu)	Test Weight (kg/ht)	Dockage (%)	Heat Damage (%)	Total Damage (%)	Foreign Material (%)	Shrunk & Broken (%)	Total Defects (%)	Moisture (%)	Protein (% 12% mb)			Falling Number (s, 14%mb)	Thousand Kernel Weight (g, 14% mb)	Kernel Hardness (-20 to 120)	Kernel Size (mm)	Ash (% 14% mb)	Wet Gluten (% 14% mb)
												Average	Low	High						
SWH	NC	17	59.8	78.7	0.5	0.0	0.0	0.0	0.9	0.9	8.5	10.7	8.8	12.7	332	31.6	24.6	2.58	1.32	24.9
SWH	NE	26	61.3	80.6	0.3	0.0	0.0	0.0	0.8	0.8	8.9	11.1	8.8	14.0	341	31.4	23.0	2.59	1.40	23.5
SWH	C	62	59.5	78.3	0.3	0.0	0.0	0.1	1.0	1.1	8.7	12.1	10.2	15.5	339	28.3	22.3	2.49	1.42	30.8
SWH	SW	1	62.9	82.7	0.2	0.0	0.0	0.0	1.0	1.0	10.0	9.0	9.0	9.0	349	35.4	27.8	2.67	1.42	16.4
SWH	SE	12	61.2	80.5	0.3	0.0	0.4	0.9	0.4	1.7	9.6	9.6	8.0	10.7	276	40.6	21.9	2.85	1.60	19.7
	Crop Year Average																			
SWH	2023	118	60.1	79.1	0.3	0.0	0.0	0.1	0.9	1.0	8.8	11.4			333	30.7	22.8	2.56	1.42	27.1
SWH	2022	404	61.0	80.2	0.5	0.0	0.0	0.1	0.5	0.6	8.9	9.5			340	34.8	28.0	2.74	1.47	20.1
SWH	5-year average	416	61.1	80.3	0.5	0.0	0.0	0.0	0.6	0.7	9.1	10.0			326	34.4	28.7	2.72	1.40	22.8
WHCB	NC	8	60.4	79.5	0.8	0.0	0.0	0.0	1.1	1.2	8.1	9.7	8.4	11.4	323	29.3	21.8	2.48	1.25	
WHCB	C	4	61.3	80.7	0.3	0.0	0.0	0.0	1.3	1.3	8.5	10.7	10.2	11.0	309	28.3	22.5	2.39	1.25	
	Crop Year Average																			
WHCB	2023	12	60.7	79.9	0.6	0.0	0.0	0.0	1.2	1.2	8.2	10.1			318	29.0	22.0	2.45	1.25	
WHCB	2022	53	60.6	79.8	0.8	0.0	0.0	0.0	1.1	1.1	7.8	10.1			356	30.2	31.1	2.55	1.36	
WHCB	5-year average	91	60.7	79.9	0.6	0.0	0.0	0.1	1.1	1.2	8.3	10.0			331	30.7	30.0	2.55	1.31	
HRW	NC	2	60.8	80.0	0.3	0.0	0.0	0.0	0.6	0.6	8.2	12.1	11.5	12.7	371	35.1	62.7	2.75	1.34	28.5
HRW	NE	5	62.3	81.9	0.1	0.0	0.0	0.0	0.4	0.4	8.2	11.3	10.6	11.8	338	35.6	66.2	2.86	1.21	23.0
HRW	C	7	62.2	81.8	0.2	0.0	0.0	0.0	1.0	1.0	8.5	12.7	11.7	14.8	337	32.0	62.4	2.67	1.42	30.1
HRW	SE	3	61.8	81.3	0.3	0.0	0.0	0.0	1.2	1.3	9.9	8.7	8.2	9.1	349	32.6	55.0	2.52	1.57	17.9
	Crop Year Average																			
HRW	2023	17	62.0	81.5	0.2	0.0	0.0	0.0	0.8	0.8	8.6	11.5			344	33.5	62.3	2.71	1.37	25.7
HRW	2022	78	61.5	80.9	0.4	0.0	0.0	0.0	0.8	0.8	8.8	11.1			382	33.7	66.2	2.80	1.53	24.1
HRW	5-year average	87	61.8	81.2	0.3	0.0	0.0	0.0	0.6	0.7	8.9	11.6			367	34.5	66.5	2.82	1.42	26.3
HRS	NE	3	62.7	82.4	0.5	0.0	0.0	0.0	0.5	0.6	7.7	14.7	14.1	15.4	407	28.2	78.5	2.60	1.36	36.9
HRS	C	3	63.7	83.8	0.9	0.0	0.0	0.0	0.3	0.3	9.1	14.4	13.8	15.2	327	35.0	58.1	2.87	1.50	35.5
	Crop Year Average																			
HRS	2023	6	63.2	83.1	0.7	0.0	0.0	0.0	0.4	0.4	8.4	14.5			370	31.6	68.3	2.74	1.43	36.2
HRS	2022	56	61.6	81.0	0.4	0.0	0.0	0.0	0.6	0.7	8.7	14.4			387	30.5	72.2	2.71	1.65	35.1
HRS	5-year average	64	62.0	81.6	0.4	0.0	0.1	0.0	0.8	0.9	9.1	14.6			379	30.8	71.6	2.72	1.61	36.4

* Wet gluten has been discontinued for club wheat

Distributions

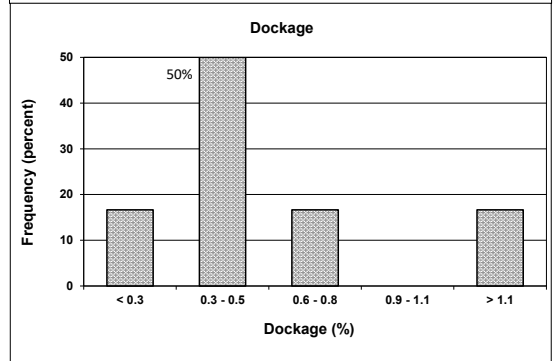
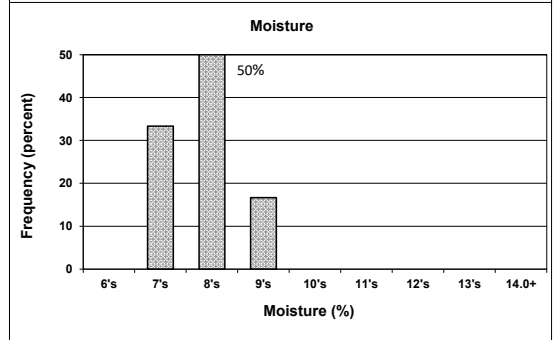
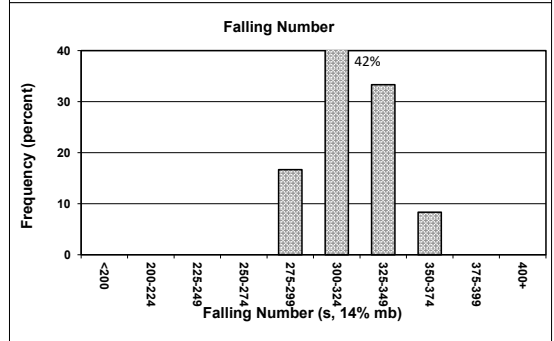
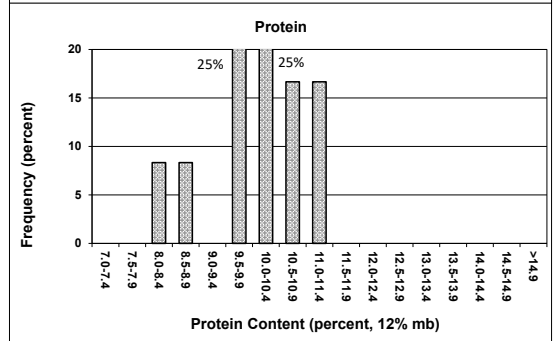
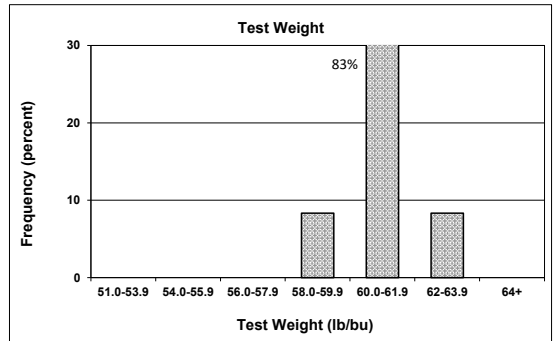
SOFT WHITE WHEAT

118 SAMPLES



WHITE CLUB WHEAT

12 SAMPLES



Prepared by: Wheat Marketing Center, Portland, Oregon