



2024 PACIFIC NORTHWEST CROP QUALITY REPORT

WEEK 2: August 8, 2024

We received and processed a total of 182 samples by the end of the second week reporting period for the 2024 Pacific Northwest wheat harvest.

SAMPLE DISTRIBUTION –

117 wheat samples were received in the second week – 83 soft white (SWH), 7 white club (WHCB), 16 hard red winter (HRW), and 11 hard red spring (HRS). 43 samples (37%) were from District 10, 23 (20%) were from District 8, 17 samples (15%) were from District 4, and less than 10% each were from District 11, District 6, District 5, District 3 and District 1. (Please refer to page 2 - USDA Economic Statistics Districts Map.)

USDA ECONOMIC STATISTICS DISTRICTS (TABLE 1) DATA –

SWH – Average **test weight** was 61.3 lb/bu (80.6 kg/hl), higher than the 5-year average of 60.8 lb/bu (80.0 kg/hl). Average **dockage** was 0.4%. Average **wheat moisture** content was 8.1%, lower than the 5-year average of 9.2%. Average **wheat protein** content (12% mb) was 9.2%, slightly higher than the last week but lower than the 5-year average of 10.3%. Average **falling number** value (14% mb) was 318 seconds, lower than the 5-year average of 330 seconds. Average **thousand kernel weight** (14% mb) was 34.3 g, higher than the 5-year average of 33.8 g. Average **kernel size** was 2.71 mm, similar to the 5-year average of 2.69 mm.

WHCB – Average **test weight** was 60.9 lb/bu (80.1 kg/hl), slightly higher than the 5-year average of 60.6 lb/bu (79.8 kg/hl). Average **wheat protein** content (12% mb) was 8.8%, lower than the 5-year average of 10.4%. Average **falling number** value (14% mb) was 325 seconds, lower than the 5-year average of 333 seconds. Average **thousand kernel weight** (14% mb) was 31.9 g, higher than the 5-year average of 30.1 g. Average **kernel size** was 2.64 mm, larger than the 5-year average of 2.52 mm.

HRW – Average **test weight** was 61.7 lb/bu (81.2 kg/hl), similar to the 5-year average of 61.6 lb/bu (80.9 kg/hl). Average **wheat protein** content (12% mb) was 10.7%, lower than the 5-year average of 11.7%. **Thousand kernel weight** (14% mb) and **kernel size** were both higher than the 5-year averages.

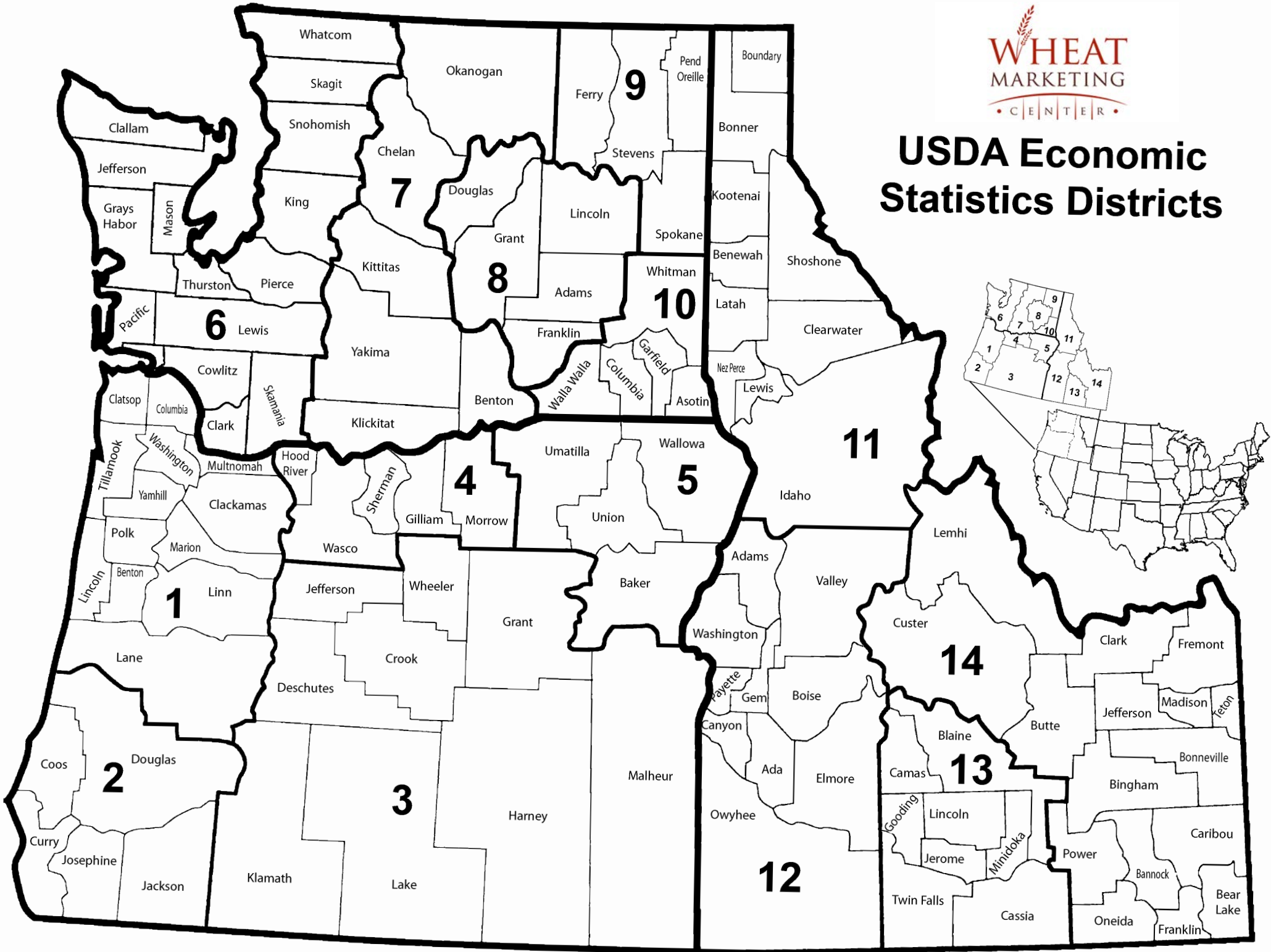
HRS – Average **test weight** was 61.9 lb/bu (81.4 kg/hl), the same as the 5-year average. Average **wheat protein** content (12% mb) was 13.9%, lower than the 5-year average of 14.7%. **Thousand kernel weight** (14% mb) and **kernel size** were both higher than the 5-year averages.

PACIFIC NORTHWEST WHEAT PRODUCTION ZONES (TABLE 2) DATA –

Forty percent of this week's samples were from Zone NC, 32% were from Zone NE, 25% were from Zone C and 3% were from Zone SW. (Please refer to page 4 – Pacific Northwest Wheat Production Zones Map.)

SWH – Average **wheat protein** content (12% mb) was highest for Zone NC and SW at 9.7%, followed by Zone NE at 9.3%, and the lowest was for Zone C at 8.5%.

USDA Economic Statistics Districts





BY USDA ECONOMIC STATISTICS DISTRICTS

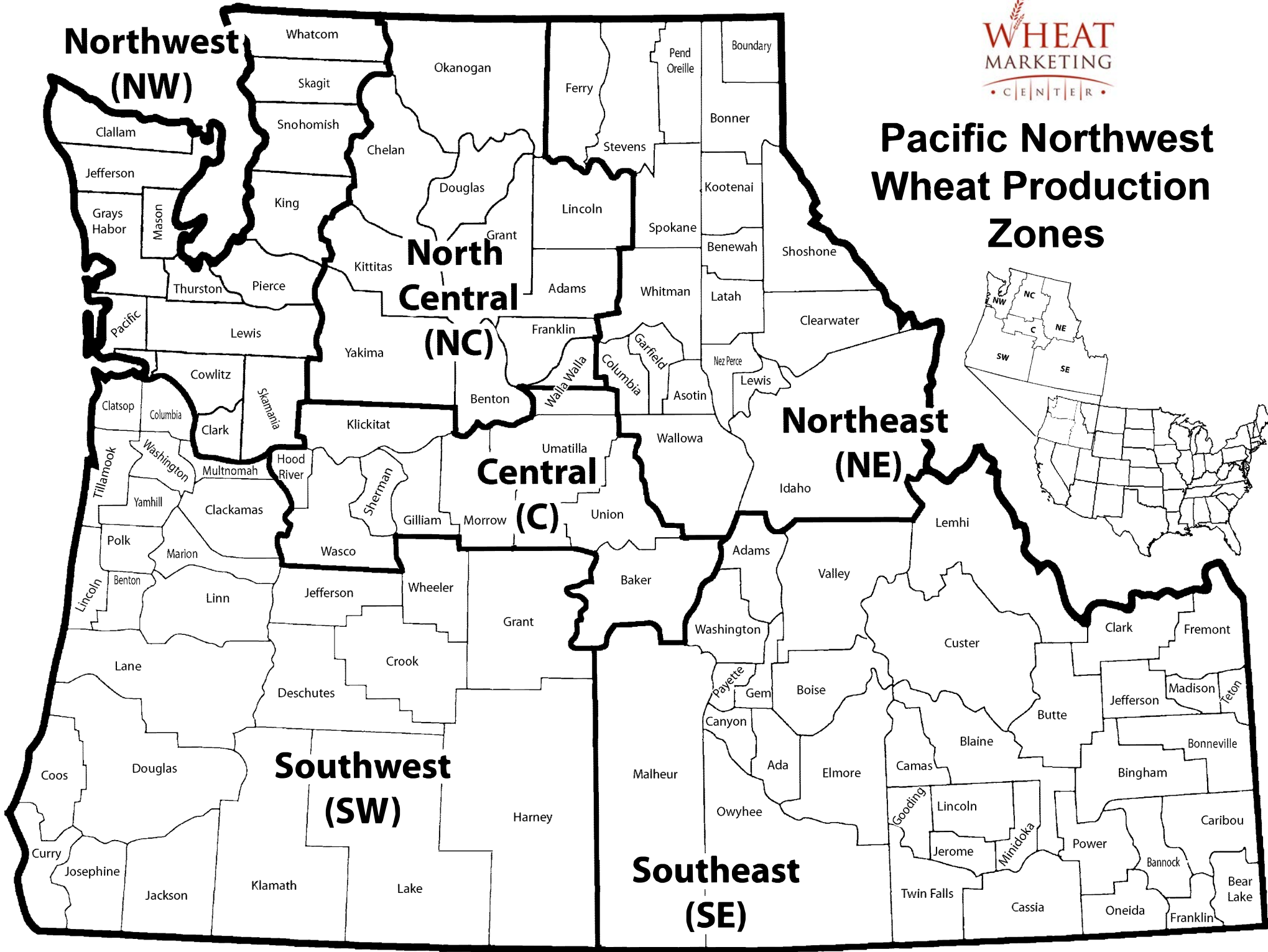
Table 1

2024 CROP WEEK 2: August 8, 2024

			Grading Data								Quality Data									
Class	District	Number of Samples	Test Weight (lb/bu)	Test Weight (kg/ht)	Dockage (%)	Heat Damage (%)	Total Damage (%)	Foreign Material (%)	Shrunk & Broken (%)	Total Defects (%)	Moisture (%)	Protein (% 12% mb)			Falling Number (s. 14%mb)	Thousand Kernel Weight (g. 14% mb)	Kernel Hardness (-20 to 120)	Kernel Size (mm)	Ash (% 14% mb)	Wet Gluten (% 14% mb)
												Average	Low	High						
SWH	1/2	3	60.7	79.8	0.6	0.0	0.1	0.0	0.6	0.6	10.9	8.9	8.0	9.7	330	40.8	26.5	2.88	1.36	20.7
SWH	3	1	59.7	78.6	0.4	0.0	0.0	0.0	0.6	0.6	8.7	12.1	12.1	12.1	331	30.1	28.9	2.57	1.46	28.3
SWH	4	24	61.0	80.2	0.5	0.0	0.0	0.0	0.4	0.5	8.3	8.2	7.0	10.7	295	34.2	20.1	2.73	1.28	15.7
SWH	5	14	61.0	80.3	0.4	0.0	0.0	0.0	0.5	0.5	8.9	9.0	7.1	10.6	316	38.1	21.0	2.81	1.42	19.6
SWH	6/7	10	61.6	81.0	0.5	0.0	0.0	0.1	0.6	0.6	8.9	9.3	8.3	11.5	311	36.3	26.7	2.75	1.24	19.7
SWH	8	16	61.3	80.6	0.5	0.0	0.0	0.0	0.6	0.6	8.2	10.2	9.0	11.7	326	35.0	29.4	2.69	1.30	26.6
SWH	10	47	61.5	80.9	0.5	0.0	0.0	0.1	0.4	0.5	7.7	8.8	6.9	10.9	313	33.7	27.4	2.70	1.31	18.2
SWH	11	18	61.5	80.8	0.4	0.0	0.0	0.0	0.7	0.8	7.4	10.4	7.4	13.0	356	30.7	30.2	2.62	1.43	27.5
	Crop Year Average																			
SWH	2024	133	61.3	80.6	0.4	0.0	0.0	0.0	0.5	0.5	8.1	9.2			318	34.3	26.0	2.71	1.33	20.4
SWH	2023	385	60.2	79.2	0.4	0.0	0.0	0.1	0.7	0.8	9.1	11.0			334	32.5	20.7	2.62	1.39	25.8
SWH	5-year average	398	60.8	80.0	0.5	0.0	0.0	0.0	0.6	0.7	9.2	10.3			330	33.8	27.4	2.69	1.41	23.9
WHCB	4	1	60.4	79.5	0.8	0.0	0.0	0.4	0.5	0.9	7.9	6.4	6.4	6.4	286	33.6	18.0	2.66	1.21	
WHCB	8	5	60.8	80.0	0.7	0.0	0.0	0.2	0.8	1.0	7.7	9.3	8.2	10.8	307	32.6	28.8	2.62	1.29	
WHCB	10	2	61.4	80.7	0.7	0.0	0.0	0.2	1.5	1.7	8.1	8.8	7.1	10.5	390	29.5	30.2	2.66	1.33	
	Crop Year Average																			
WHCB	2024	8	60.9	80.1	0.7	0.0	0.0	0.2	0.9	1.1	7.8	8.8			325	31.9	27.8	2.64	1.29	
WHCB	2023	65	60.7	79.9	0.6	0.0	0.0	0.0	1.2	1.3	8.6	10.6			327	29.9	22.1	2.49	1.26	
WHCB	5-year average	79	60.6	79.8	0.6	0.0	0.0	0.0	1.2	1.2	8.4	10.4			333	30.1	28.8	2.52	1.31	
HRW	4	4	63.5	83.4	0.8	0.0	0.0	0.1	0.4	0.5	7.9	11.6	10.7	13.4	354	36.3	65.9	2.87	1.38	28.1
HRW	5	2	61.3	80.6	0.9	0.0	0.0	0.1	0.9	0.9	8.6	9.9	9.6	10.1	377	36.5	55.9	2.89	1.49	21.1
HRW	6/7	5	62.1	81.6	0.5	0.0	0.0	0.0	1.0	1.0	8.7	10.6	7.9	11.4	352	39.6	65.1	2.99	1.44	22.5
HRW	8	8	62.0	81.5	0.4	0.0	0.0	0.0	0.4	0.5	8.5	11.2	9.9	12.4	368	40.9	63.3	3.02	1.36	25.7
HRW	10	6	60.5	79.5	0.4	0.0	0.0	0.0	0.7	0.7	7.6	10.4	8.4	11.5	345	31.9	62.8	2.73	1.39	19.5
HRW	11	1	59.7	78.6	0.5	0.0	0.0	0.0	1.0	1.0	7.6	7.5	7.5	7.5	261	33.2	48.5	2.81	1.42	5.4
	Crop Year Average																			
HRW	2024	26	61.7	81.2	0.5	0.0	0.0	0.0	0.6	0.7	8.2	10.7			354	37.2	62.8	2.91	1.40	22.9
HRW	2023	73	61.7	81.1	0.3	0.0	0.1	0.0	0.6	0.7	9.3	11.8			355	36.3	61.0	2.83	1.42	25.9
HRW	5-year average	79	61.6	80.9	0.3	0.0	0.0	0.0	0.6	0.7	9.1	11.7			365	34.4	65.7	2.80	1.43	26.5
HRS	4	1	63.8	83.8	0.5	0.0	0.0	0.0	0.3	0.3	8.7	12.9	12.9	12.9	360	36.4	69.4	2.88	1.53	31.6
HRS	6/7	1	62.1	81.7	1.4	0.0	0.0	0.1	0.3	0.4	8.2	15.2	15.2	15.2	361	37.5	65.9	2.95	1.44	27.1
HRS	8	6	60.9	80.1	0.8	0.0	0.0	0.1	0.7	0.7	9.0	13.6	11.2	14.7	368	34.4	67.6	2.80	1.71	31.7
HRS	10	4	62.6	82.3	0.9	0.0	0.0	0.2	0.8	1.1	8.6	14.1	13.6	14.7	357	32.3	70.5	2.75	1.53	35.2
HRS	11	3	62.2	81.8	0.2	0.0	0.0	0.0	0.9	0.9	7.3	14.4	12.7	15.3	418	27.2	79.3	2.57	1.57	35.2
	Crop Year Average																			
HRS	2024	15	61.9	81.4	0.7	0.0	0.0	0.1	0.7	0.8	8.5	13.9			374	32.7	70.7	2.76	1.60	33.0
HRS	2023	36	61.7	81.2	0.5	0.0	0.0	0.0	0.6	0.7	9.5	14.6			370	32.0	65.9	2.75	1.58	35.2
HRS	5-year average	52	61.9	81.3	0.5	0.0	0.1	0.0	0.8	0.9	9.3	14.7			376	30.8	70.3	2.72	1.61	36.4

1200 N.W. Naito Parkway, Suite 230, Portland, OR 97209-2831
 Ph: (503) 295-0823 Fax: (503) 295-2735 Email: liman@wmcinc.org

Pacific Northwest Wheat Production Zones





BY PRODUCTION ZONES

Table 2

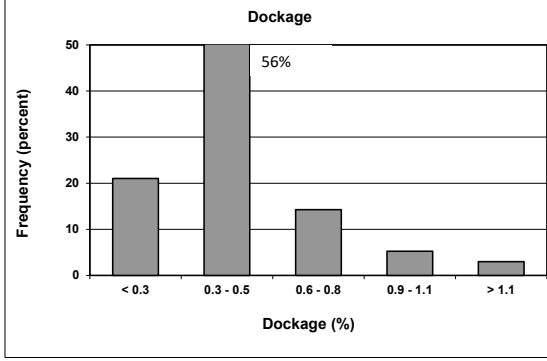
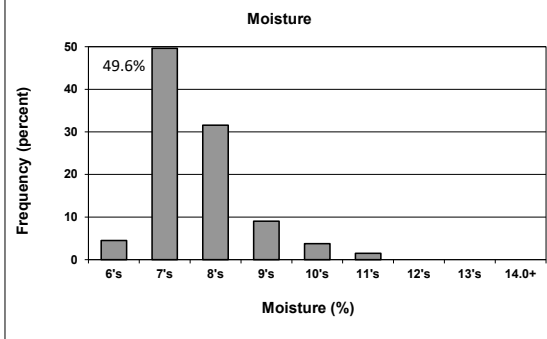
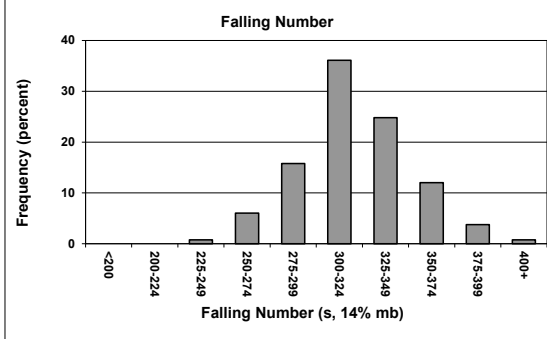
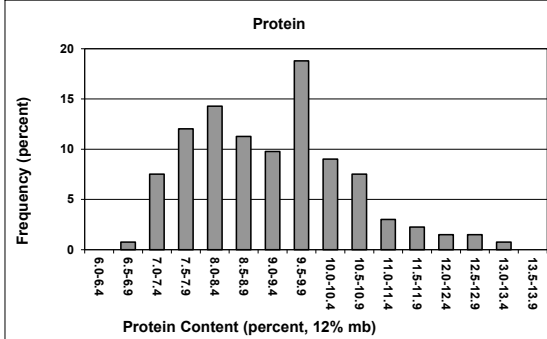
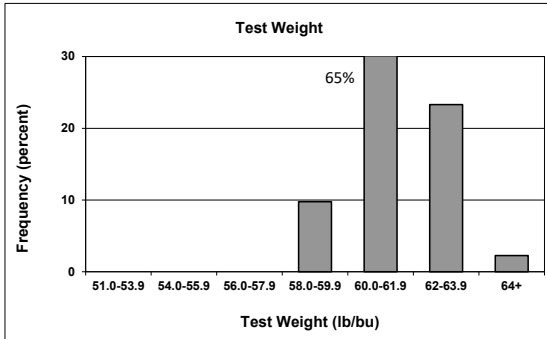
2024 CROP WEEK 2: August 8, 2024																				
			Grading Data								Quality Data									
Class	District	Number of Samples	Test Weight (lb/bu)	Test Weight (kg/ht)	Dockage (%)	Heat Damage (%)	Total Damage (%)	Foreign Material (%)	Shrunk & Broken (%)	Total Defects (%)	Moisture (%)	Protein (% 12% mb)			Falling Number (s. 14%mb)	Thousand Kernel Weight (g. 14% mb)	Kernel Hardness (-20 to 120)	Kernel Size (mm)	Ash (% 14% mb)	Wet Gluten (% 14% mb)
												Average	Low	High						
SWH	NC	35	61.6	81.0	0.5	0.0	0.0	0.0	0.5	0.5	8.0	9.7	7.1	11.7	323	35.3	28.1	2.72	1.30	23.5
SWH	NE	54	61.4	80.8	0.4	0.0	0.0	0.1	0.5	0.6	7.6	9.3	6.9	13.0	324	32.4	28.7	2.66	1.34	20.7
SWH	C	40	61.0	80.2	0.5	0.0	0.0	0.0	0.5	0.5	8.6	8.5	7.0	10.7	301	35.7	20.4	2.75	1.33	17.1
SWH	SW	4	60.4	79.5	0.5	0.0	0.1	0.0	0.6	0.6	10.4	9.7	8.0	12.1	330	38.1	27.1	2.80	1.39	22.6
	Crop Year Average																			
SWH	2024	133	61.3	80.6	0.4	0.0	0.0	0.0	0.5	0.5	8.1	9.2			318	34.3	26.0	2.71	1.33	20.4
SWH	2023	385	60.2	79.2	0.4	0.0	0.0	0.1	0.7	0.8	9.1	11.0			334	32.5	20.7	2.62	1.39	25.8
SWH	5-year average	398	60.8	80.0	0.5	0.0	0.0	0.0	0.6	0.7	9.2	10.3			330	33.8	27.4	2.69	1.41	23.9
WHCB	NC	6	60.9	80.1	0.7	0.0	0.0	0.2	0.8	1.0	7.6	8.9	7.1	10.8	317	32.1	30.0	2.65	1.29	
WHCB	NE	1	61.7	81.1	0.4	0.0	0.0	0.0	2.4	2.4	9.3	10.5	10.5	10.5	393	29.1	24.3	2.57	1.37	
WHCB	C	1	60.4	79.5	0.8	0.0	0.0	0.4	0.5	0.9	7.9	6.4	6.4	6.4	286	33.6	18.0	2.66	1.21	
	Crop Year Average																			
WHCB	2024	8	60.9	80.1	0.7	0.0	0.0	0.2	0.9	1.1	7.8	8.8			325	31.9	27.8	2.64	1.29	
WHCB	2023	65	60.7	79.9	0.6	0.0	0.0	0.0	1.2	1.3	8.6	10.6			327	29.9	22.1	2.49	1.26	
WHCB	5-year average	79	60.6	79.8	0.6	0.0	0.0	0.0	1.2	1.2	8.4	10.4			333	30.1	28.8	2.52	1.31	
HRW	NC	15	61.9	81.4	0.4	0.0	0.0	0.0	0.7	0.7	8.4	10.9	7.9	12.4	361	39.4	63.9	2.98	1.39	24.2
HRW	NE	5	60.2	79.2	0.5	0.0	0.0	0.0	0.7	0.7	7.7	9.8	7.5	11.5	319	31.7	59.8	2.71	1.42	15.6
HRW	C	6	62.7	82.4	0.8	0.0	0.0	0.1	0.5	0.6	8.1	11.0	9.6	13.4	361	36.4	62.6	2.88	1.42	25.8
	Crop Year Average																			
HRW	2024	26	61.7	81.2	0.5	0.0	0.0	0.0	0.6	0.7	8.2	10.7			354	37.2	62.8	2.91	1.40	22.9
HRW	2023	73	61.7	81.1	0.3	0.0	0.1	0.0	0.6	0.7	9.3	11.8			355	36.3	61.0	2.83	1.42	25.9
HRW	5-year average	79	61.6	80.9	0.3	0.0	0.0	0.0	0.6	0.7	9.1	11.7			365	34.4	65.7	2.80	1.43	26.5
HRS	NC	9	61.7	81.2	0.8	0.0	0.0	0.1	0.6	0.6	8.7	13.8	11.2	15.2	361	35.7	67.5	2.86	1.65	32.2
HRS	NE	5	61.8	81.3	0.6	0.0	0.0	0.2	1.0	1.2	7.9	14.4	12.7	15.3	400	26.6	76.8	2.56	1.54	34.7
HRS	C	1	63.8	83.8	0.5	0.0	0.0	0.0	0.3	0.3	8.7	12.9	12.9	12.9	360	36.4	69.4	2.88	1.53	31.6
	Crop Year Average																			
HRS	2024	15	61.9	81.4	0.7	0.0	0.0	0.1	0.7	0.8	8.5	13.9			374	32.7	70.7	2.76	1.60	33.0
HRS	2023	36	61.7	81.2	0.5	0.0	0.0	0.0	0.6	0.7	9.5	14.6			370	32.0	65.9	2.75	1.58	35.2
HRS	5-year average	52	61.9	81.3	0.5	0.0	0.1	0.0	0.8	0.9	9.3	14.7			376	30.8	70.3	2.72	1.61	36.4

1200 N.W. Naito Parkway, Suite 230, Portland, OR 97209-2831
 Ph: (503) 295-0823 Fax: (503) 295-2735 Email: liman@wmcinc.org

Distributions

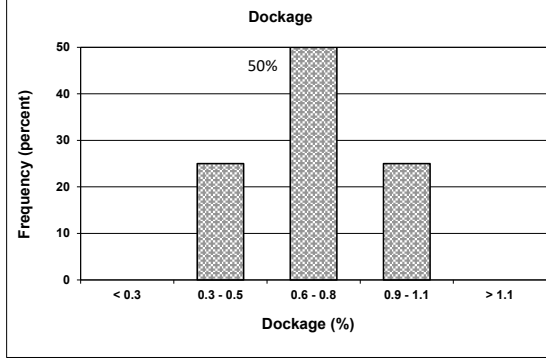
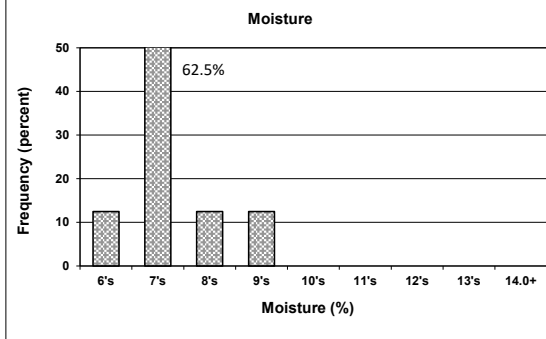
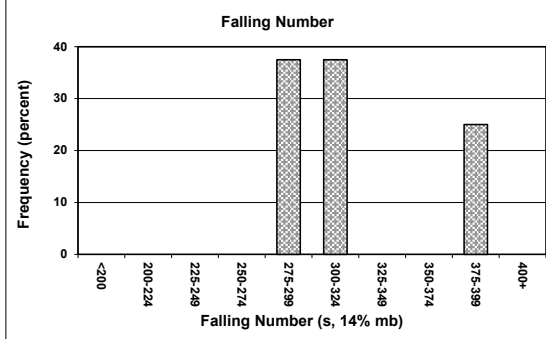
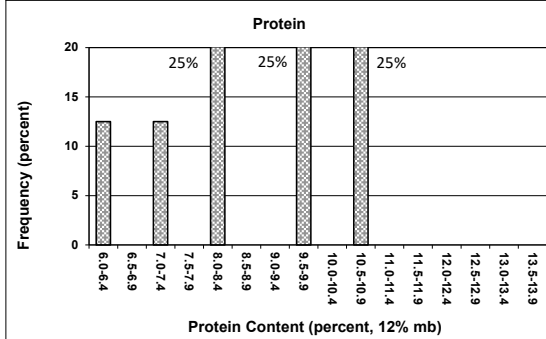
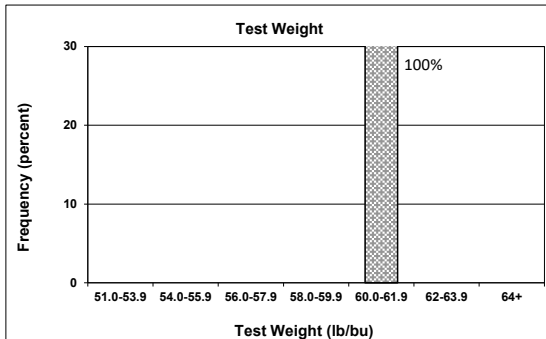
SOFT WHITE WHEAT

133 SAMPLES



WHITE CLUB WHEAT

8 SAMPLES



Prepared by: Wheat Marketing Center, Portland, Oregon